

For Research Use Only

# AFM Monoclonal antibody

Catalog Number: 66113-1-Ig **1 Publications**



## Basic Information

**Catalog Number:**

66113-1-Ig

**Size:**

900 ug/ml

**Source:**

Mouse

**Isotype:**

IgG1

**Immunogen Catalog Number:**

AG16866

**GenBank Accession Number:**

BC109020

**GeneID (NCBI):**

173

**UNIPROT ID:**

P43652

**Full Name:**

afamin

**Calculated MW:**

599 aa, 69 kDa

**Observed MW:**

85 kDa

**Purification Method:**

Protein G purification

**CloneNo.:**

2G9F6

**Recommended Dilutions:**

WB 1:2000-1:10000

IP 0.5-4.0 ug for 1.0-3.0 mg of total protein lysate

IHC 1:50-1:500

IF/ICC 1:200-1:800

## Applications

**Tested Applications:**

WB, IHC, IF/ICC, IP, ELISA

**Cited Applications:**

WB

**Species Specificity:**

human, mouse

**Note-IHC: suggested antigen retrieval with TE buffer pH 9.0; (\*) Alternatively, antigen retrieval may be performed with citrate buffer pH 6.0**

**Positive Controls:**

WB : human plasma,

IP : human plasma tissue,

IHC : mouse brain tissue, human liver tissue

IF/ICC : HeLa cells,

## Background Information

AFM (Afamin) is a member of the albumin superfamily, which comprises albumin, vitamin D-binding protein, a-fetoprotein, and afamin. AFM is present in the plasma/serum, cerebrospinal fluid, and follicular fluid, and functions as a vitamin E-binding protein. Alterations of expression level of AFM have been linked to variety of diseases like cancer.

## Notable Publications

Author	Pubmed ID	Journal	Application
Qing-Xiu Liu	29983616	J Ginseng Res	WB

## Storage

**Storage:**

Store at -20°C. Stable for one year after shipment.

**Storage Buffer:**

PBS with 0.02% sodium azide and 50% glycerol pH 7.3.

Aliquoting is unnecessary for -20°C storage

For technical support and original validation data for this product please contact:

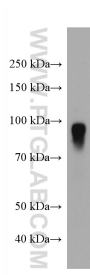
T: 4006900926

E: Proteintech-CN@ptglab.com

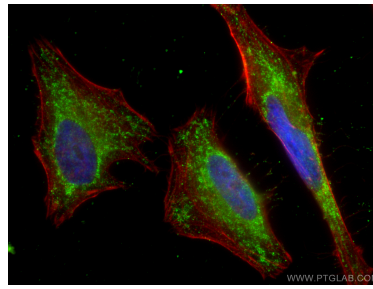
W: ptgcn.com

**This product is exclusively available under Proteintech Group brand and is not available to purchase from any other manufacturer.**

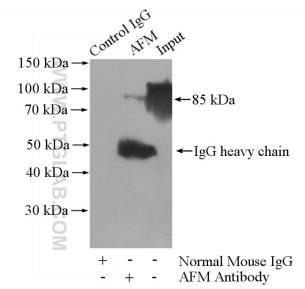
## Selected Validation Data



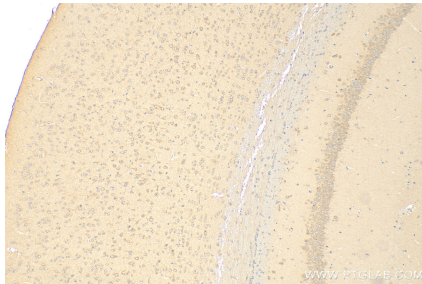
human plasma were subjected to SDS PAGE followed by western blot with 66113-1-Ig (AFM antibody) at dilution of 1:5000 incubated at room temperature for 1.5 hours.



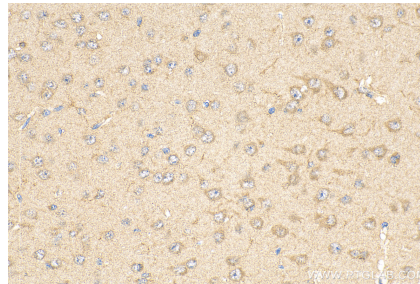
Immunofluorescent analysis of (-20°C Ethanol) fixed HeLa cells using AFM antibody (66113-1-Ig, Clone: 2G9F6) at dilution of 1:400 and CoraLite®488-Conjugated AffiniPure Goat Anti-Mouse IgG(H+L), CL594-Phalloidin (red).



IP result of anti-AFM (IP:66113-1-Ig, 5ug; Detection:66113-1-Ig 1:500) with human plasma lysate 4000ug.



Immunohistochemical analysis of paraffin-embedded mouse brain tissue slide using 66113-1-Ig (AFM antibody) at dilution of 1:200 (under 10x lens). Heat mediated antigen retrieval with Tris-EDTA buffer (pH 9.0).



Immunohistochemical analysis of paraffin-embedded mouse brain tissue slide using 66113-1-Ig (AFM antibody) at dilution of 1:200 (under 40x lens). Heat mediated antigen retrieval with Tris-EDTA buffer (pH 9.0).