

For Research Use Only

TBP Monoclonal antibody

Catalog Number: 66166-1-Ig **24 Publications**



Basic Information

Catalog Number: 66166-1-Ig	GenBank Accession Number: BC110341	Purification Method: Protein A purification
Concentration: 2000 ug/ml	GeneID (NCBI): 6908	CloneNo.: 2H3B2
Source: Mouse	UNIPROT ID: P20226	Recommended Dilutions: WB 1:20000-1:100000
Isotype: IgG2a	Full Name: TATA box binding protein	IP 0.5-4.0 ug for 1.0-3.0 mg of total protein lysate
Immunogen Catalog Number: AG12383	Calculated MW: 338 aa, 38 kDa	IHC 1:325-1:1300
	Observed MW: mouse/rat 33-36 kDa and human 37-43kDa	IF/ICC 1:1000-1:4000

Applications

Tested Applications:
WB, IHC, IF/ICC, IP, ELISA

Cited Applications:
WB, IF

Species Specificity:
human, mouse, rat, pig

Cited Species:
human, mouse, rat, pig

Note-IHC: suggested antigen retrieval with TE buffer pH 9.0; (*) Alternatively, antigen retrieval may be performed with citrate buffer pH 6.0

Positive Controls:

WB: LNCaP cells, HSC-T6 cells, HEK-293 cells, pig liver tissue, HeLa cells, HepG2 cells, Jurkat cells, K-562 cells, NIH/3T3 cells, Neuro-2a cells

IP: HEK-293 cells,

IHC: human liver cancer tissue, human breast cancer tissue

IF/ICC: A431 cells, HeLa cells

Background Information

The TATA binding protein (TBP) is a transcription factor that binds specifically to a DNA sequence TATA box. This DNA sequence is found about 25-30 base pairs upstream of the transcription start site in some eukaryotic gene promoters. TBP, along with a variety of TBP-associated factors, make up the TFIID, a general transcription factor that in turn makes up part of the RNA polymerase II preinitiation complex. As one of the few proteins in the preinitiation complex that binds DNA in a sequence-specific manner, it helps position RNA polymerase II over the transcription start site of the gene. However, it is estimated that only 10-20% of human promoters have TATA boxes. Therefore, TBP is probably not the only protein involved in positioning RNA polymerase II. This antibody detects human TBP (~40 kDa) and mouse/rat Tbp (~35 kDa).

Notable Publications

Author	Pubmed ID	Journal	Application
Alexander K Kunisky	34644577	Cell Rep	WB
Jing Lu	36436207	Psychiatry Clin Neurosci	WB
Yu Chen	31770366	PLoS Biol	WB

Storage

Storage:
Store at -20°C. Stable for one year after shipment.

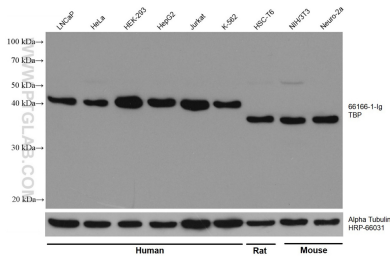
Storage Buffer:
PBS with 0.02% sodium azide and 50% glycerol

Aliquoting is unnecessary for -20°C storage

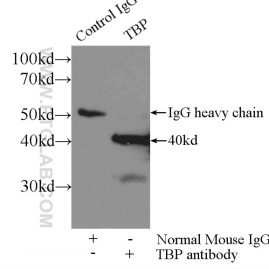
For technical support and original validation data for this product please contact:
T: 4006900926 E: Proteintech-CN@ptglab.com W: ptgcn.com

This product is exclusively available under Proteintech Group brand and is not available to purchase from any other manufacturer.

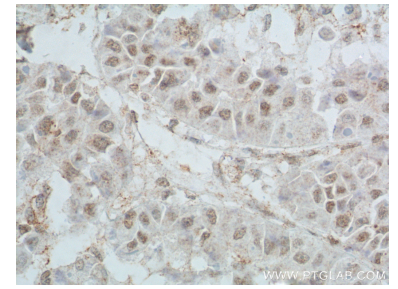
Selected Validation Data



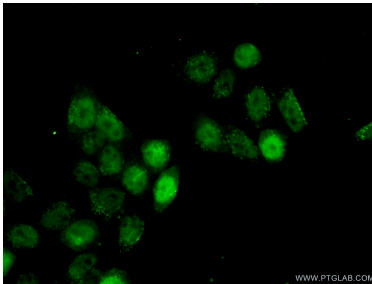
Various lysates were subjected to SDS PAGE followed by western blot with 66166-1-Ig (TBP antibody) at dilution of 1:200000 incubated at room temperature for 1.5 hours. The membrane was stripped and reblotted with HRP-conjugated Alpha Tubulin Monoclonal antibody (HRP-66031) as loading control.



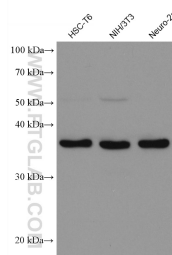
IP result of anti-TBP (IP:66166-1-Ig, 3ug; Detection:66166-1-Ig 1:800) with HEK-293 cells lysate 1800ug.



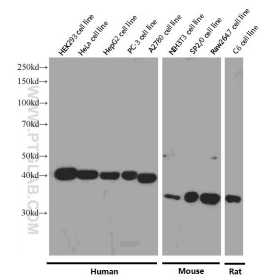
Immunohistochemical analysis of paraffin-embedded human liver cancer tissue slide using 66166-1-Ig (TBP Antibody) at dilution of 1:650 (under 40x lens). Heat mediated antigen retrieval with Tris-EDTA buffer (pH 9.0).



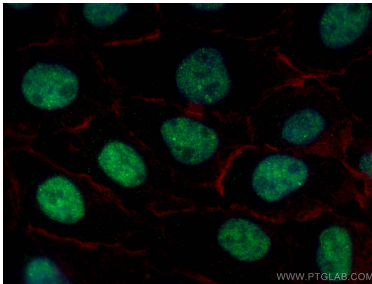
Immunofluorescent analysis of (10% Formaldehyde) fixed HeLa cells using 66166-1-Ig (TBP antibody) at dilution of 1:100 and Alexa Fluor 488-conjugated AffiniPure Goat Anti-Mouse IgG(H+L).



Various lysates were subjected to SDS PAGE followed by western blot with 66166-1-Ig (TBP antibody) at dilution of 1:200000 incubated at room temperature for 1.5 hours.



Western blot analysis of TBP in various cell lines using Proteintech antibody 66166-1-Ig at a dilution of 1:8000 incubated at room temperature for 1.5 hours.



Immunofluorescent analysis of (4% PFA) fixed A431 cells using TBP antibody (66166-1-Ig, Clone: 2H3B2) at dilution of 1:2000 and CoraLite®488-Conjugated AffiniPure Goat Anti-Mouse IgG(H+L), CL594-phalloidin (red).