

For Research Use Only

Caspase 9/P35/P10 Monoclonal antibody

Catalog Number: 66169-1-Ig **114 Publications**



Basic Information

Catalog Number: 66169-1-Ig	GenBank Accession Number: BC002452	Purification Method: Protein A purification
Concentration: 2700 ug/ml	GeneID (NCBI): 842	CloneNo.: 1B7G2
Source: Mouse	UNIPROT ID: P55211	Recommended Dilutions: WB 1:500-1:2000
Isotype: IgG2b	Full Name: caspase 9, apoptosis-related cysteine peptidase	IP 0.5-4.0 ug for 1.0-3.0 mg of total protein lysate
Immunogen Catalog Number: AG20813	Calculated MW: 46 kDa	IHC 1:100-1:400
	Observed MW: 46 kDa, 35 kDa	IF/ICC 1:50-1:500

Applications

Tested Applications: WB, IHC, IF/ICC, IP, ELISA	Positive Controls:
Cited Applications: WB, IHC, IF, ELISA	WB: HeLa cells, Jurkat cells
Species Specificity: human, mouse	IP: HeLa cells,
Cited Species: human, mouse, rat, pig, sheep	IHC: human lymphoma tissue, human pancreas tissue
Note-IHC: suggested antigen retrieval with TE buffer pH 9.0; (*) Alternatively, antigen retrieval may be performed with citrate buffer pH 6.0	IF/ICC: HeLa cells,

Background Information

Caspase 9, apoptosis-related cysteine protease (CASP9, synonyms: MCH6, APAF3, APAF-3, ICE-LAP6, CASPASE-9c) is a member of the cysteine-aspartic acid protease (caspase) family. Sequential activation of caspases plays a central role in the execution-phase of cell apoptosis. Caspases exist as inactive proenzymes which undergo proteolytic processing at conserved aspartic residues to produce 2 subunits, large and small, that dimerize to form the active enzyme. Caspase 9 is processed by caspase APAF1; this step is thought to be one of the earliest in the caspase activation cascade. In recent years, the localization of caspase 9 was a focus of interest. Beside its cytoplasmic distribution, a very extensive localization study was done on rat brain tissue, where caspase 9 was found located predominantly in the nucleus and to a lesser extent in the cytoplasm [PMID: 15541731].

Notable Publications

Author	Pubmed ID	Journal	Application
Dan Mo	31568784	Eur J Pharmacol	WB
Na Jiang	32975326	Cell Prolif	WB
Xinbo Wu	32914567	J Cell Mol Med	WB

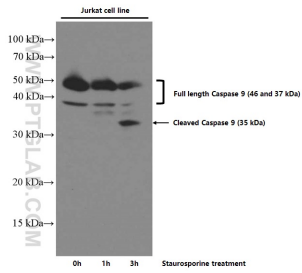
Storage

Storage:
Store at -20°C. Stable for one year after shipment.
Storage Buffer:
PBS with 0.02% sodium azide and 50% glycerol pH 7.3.
Aliquoting is unnecessary for -20°C storage

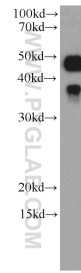
For technical support and original validation data for this product please contact:
T: 4006900926 E: Proteintech-CN@ptglab.com W: ptgcn.com

This product is exclusively available under Proteintech Group brand and is not available to purchase from any other manufacturer.

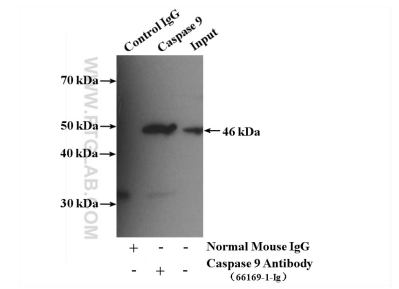
Selected Validation Data



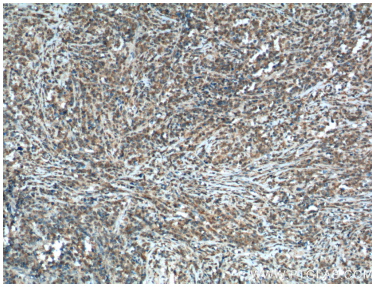
Untreated and Staurosporine treated Jurkat cells were subjected to SDS PAGE followed by western blot with 66169-1-Ig (Caspase 9/P35/P10 antibody) at dilution of 1:5000 incubated at room temperature for 1.5 hours.



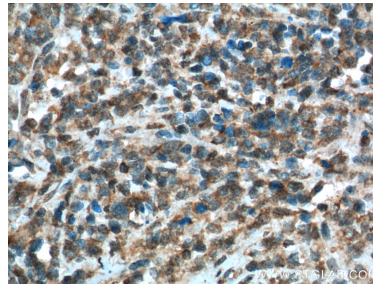
HeLa cells were subjected to SDS PAGE followed by western blot with 66169-1-Ig (Caspase 9/P35/P10 antibody) at dilution of 1:1000 incubated at room temperature for 1.5 hours.



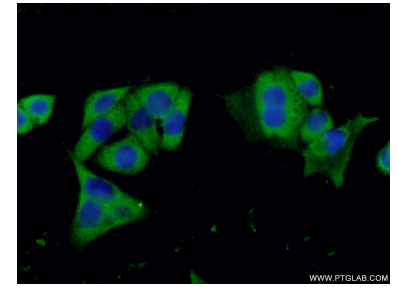
IP result of anti-Caspase 9/P35/P10 (IP:66169-1-Ig, 5ug; Detection:66169-1-Ig 1:500) with HeLa cells lysate 3200ug.



Immunohistochemical analysis of paraffin-embedded human lymphoma tissue slide using 66169-1-Ig (Caspase 9/P35/P10 antibody) at dilution of 1:200 (under 10x lens). Heat mediated antigen retrieval with Tris-EDTA buffer (pH 9.0).



Immunohistochemical analysis of paraffin-embedded human lymphoma tissue slide using 66169-1-Ig (Caspase 9/P35/P10 antibody) at dilution of 1:200 (under 40x lens). Heat mediated antigen retrieval with Tris-EDTA buffer (pH 9.0).



Immunofluorescent analysis of (-20°C Ethanol) fixed HeLa cells using 66169-1-Ig (Caspase 9/P35/P10 antibody) at dilution of 1:100 and Alexa Fluor 488-conjugated AffiniPure Goat Anti-Mouse IgG(H+L).