

For Research Use Only

Alpha 1B-Glycoprotein Monoclonal antibody



Catalog Number: 66260-1-Ig

Basic Information

Catalog Number: 66260-1-Ig	GenBank Accession Number: BC035719	Purification Method: Protein G purification
Size: 1900 µg/ml	GeneID (NCBI): 1	CloneNo.: 4D4E5
Source: Mouse	UNIPROT ID: P04217	Recommended Dilutions: WB 1:5000-1:50000 IHC 1:50-1:500 IF/ICC 1:50-1:500
Isotype: IgG1	Full Name: alpha-1-B glycoprotein	
Immunogen Catalog Number: AG5414	Calculated MW: 54 kDa	
	Observed MW: 72 kDa	

Applications

Tested Applications:
IF/ICC, IHC, WB, ELISA

Species Specificity:
human

Note-IHC: suggested antigen retrieval with TE buffer pH 9.0; (*) Alternatively, antigen retrieval may be performed with citrate buffer pH 6.0

Positive Controls:

WB: human plasma, human heart tissue, human placenta tissue

IHC: human liver tissue,

IF/ICC: HepG2 cells,

Background Information

Alpha-1B-glycoprotein (A1BG) is a plasma protein and is a member of the immunoglobulin superfamily. A1BG contains 474 amino acids and has 5 intrachain disulfide bonds. It has been reported that cysteine-rich secretory protein 3 (CRISP-3) is a specific and high-affinity ligand of A1BG. A1BG-CRISP-3 complex displays a similar function in protecting the circulation from a potentially harmful effect of free CRISP3 (PMID: 15461460).

Storage

Storage:

Store at -20°C. Stable for one year after shipment.

Storage Buffer:

PBS with 0.02% sodium azide and 50% glycerol pH 7.3.

Aliquoting is unnecessary for -20°C storage

For technical support and original validation data for this product please contact:

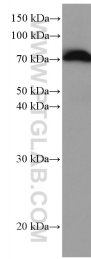
T: 4006900926

E: Proteintech-CN@ptglab.com

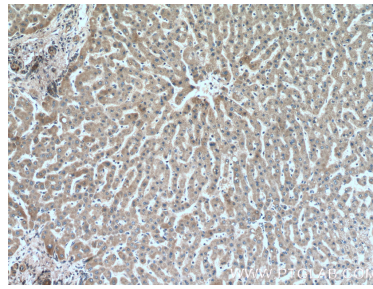
W: ptgcn.com

This product is exclusively available under Proteintech Group brand and is not available to purchase from any other manufacturer.

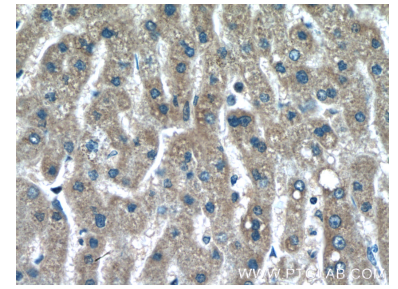
Selected Validation Data



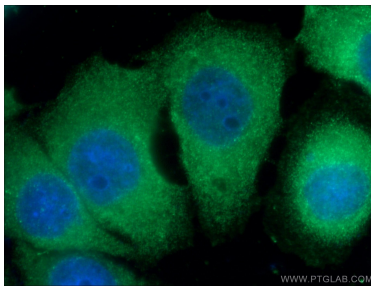
human plasma were subjected to SDS PAGE followed by western blot with 66260-1-Ig (Alpha 1B-Glycoprotein antibody) at dilution of 1:50000 incubated at room temperature for 1.5 hours.



Immunohistochemical analysis of paraffin-embedded human liver tissue slide using 66260-1-Ig (alpha-1B-glycoprotein antibody) at dilution of 1:200 (under 10x lens).



Immunohistochemical analysis of paraffin-embedded human liver tissue slide using 66260-1-Ig (alpha-1B-glycoprotein antibody) at dilution of 1:200 (under 40x lens).



Immunofluorescent analysis of (-20°C Ethanol) fixed HepG2 cells using 66260-1-Ig (alpha-1B-glycoprotein antibody) at dilution of 1:100 and Alexa Fluor 488-Conjugated AffiniPure Goat Anti-Mouse IgG(H+L).