

For Research Use Only

Cyclin D3 Monoclonal antibody

Catalog Number: 66357-1-Ig

Featured Product

1 Publications



Basic Information

Catalog Number:

66357-1-Ig

Size:

1400 µg/ml

Source:

Mouse

Isotype:

IgG1

Immunogen Catalog Number:

AG22825

GenBank Accession Number:

BC011616

GeneID (NCBI):

896

ENSEMBL Gene ID:

ENSG00000112576

UNIPROT ID:

P30281

Full Name:

cyclin D3

Calculated MW:

33 kDa

Observed MW:

33-35 kDa

Purification Method:

Protein G purification

CloneNo.:

1F2C6

Recommended Dilutions:

WB 1:1000-1:8000

IHC 1:50-1:500

Applications

Tested Applications:

IHC, WB, ELISA

Cited Applications:

WB

Species Specificity:

human

Cited Species:

human

Positive Controls:

WB: Raji cells, Jurkat cells, HL-60 cells, HEK-293 cells, K-562 cells

IHC: human pancreas cancer tissue,

Note-IHC: suggested antigen retrieval with TE buffer pH 9.0; (*) Alternatively, antigen retrieval may be performed with citrate buffer pH 6.0

Background Information

Cyclin D3 belongs to the highly conserved cyclin family, whose members are characterized by a dramatic periodicity in protein abundance through the cell cycle. Cyclins function as regulators of CDK kinases. Different cyclins exhibit distinct expression and degradation patterns which contribute to the temporal coordination of each mitotic event. This cyclin forms a complex with and functions as a regulatory subunit of CDK4 or CDK6, whose activity is required for cell cycle G1/S transition. This protein has been shown to interact with and be involved in the phosphorylation of tumor suppressor protein Rb. The CDK4 activity associated with this cyclin was reported to be necessary for cell cycle progression through G2 phase into mitosis after UV radiation.

Notable Publications

Author	Pubmed ID	Journal	Application
Kai Sun	39071619	Heliyon	WB

Storage

Storage:

Store at -20°C. Stable for one year after shipment.

Storage Buffer:

PBS with 0.02% sodium azide and 50% glycerol pH 7.3.

Aliquoting is unnecessary for -20°C storage

For technical support and original validation data for this product please contact:

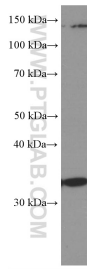
T: 4006900926

E: Proteintech-CN@ptglab.com

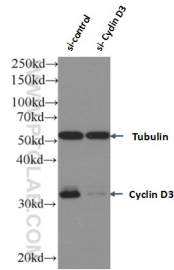
W: ptgcn.com

This product is exclusively available under Proteintech Group brand and is not available to purchase from any other manufacturer.

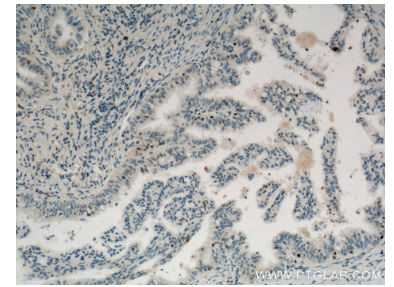
Selected Validation Data



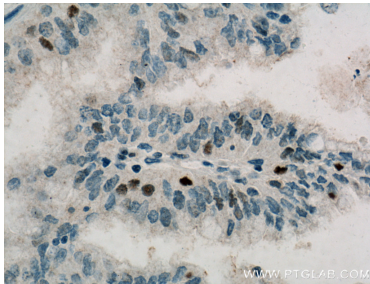
Raji cells were subjected to SDS PAGE followed by western blot with 66357-1-Ig (Cyclin D3 Antibody) at dilution of 1:4000 incubated at room temperature for 1.5 hours.



WB result of Cyclin D3 antibody (66357-1-Ig; 1:1500; incubated at room temperature for 1.5 hours) with sh-Control and sh-Cyclin D3 transfected Jurkat cells.



Immunohistochemical analysis of paraffin-embedded human pancreas cancer tissue slide using 66357-1-Ig (Cyclin D3 Antibody) at dilution of 1:200 (under 10x lens). Heat mediated antigen retrieval with Tris-EDTA buffer (pH 9.0).



Immunohistochemical analysis of paraffin-embedded human pancreas cancer tissue slide using 66357-1-Ig (Cyclin D3 Antibody) at dilution of 1:200 (under 40x lens). Heat mediated antigen retrieval with Tris-EDTA buffer (pH 9.0).