

For Research Use Only

CLTC Monoclonal antibody

Catalog Number: 66487-1-Ig

Featured Product

11 Publications



Basic Information

Catalog Number:

66487-1-Ig

Concentration:

1000 ug/ml

Source:

Mouse

Isotype:

IgG1

Immunogen Catalog Number:

AG25040

GenBank Accession Number:

BC054489

GeneID (NCBI):

1213

UNIPROT ID:

Q00610

Full Name:

clathrin, heavy chain (Hc)

Calculated MW:

192 kDa

Observed MW:

170 kDa

Purification Method:

Protein A purification

CloneNo.:

1B3D7

Recommended Dilutions:

WB 1:20000-1:100000

IHC 1:1000-1:4000

IF/ICC 1:400-1:1600

Applications

Tested Applications:

WB, IHC, IF/ICC, ELISA

Cited Applications:

WB, IF, CoIP

Species Specificity:

human, mouse, rat, pig, rabbit

Cited Species:

human, mouse, rat, pig, monkey, chicken

Note-IHC: suggested antigen retrieval with TE buffer pH 9.0; (*) Alternatively, antigen retrieval may be performed with citrate buffer pH 6.0

Positive Controls:

WB: LNCaP cells, HeLa cells, Raji cells, rat brain tissue, Jurkat cells, ROS1728 cells, pig brain tissue, HEK-293 cells, K-562 cells, rabbit brain tissue, mouse brain tissue

IHC: mouse kidney tissue, human breast cancer tissue

IF/ICC: HepG2 cells, HeLa cells

Background Information

Clathrin is the major protein of the polyhedral coat of coated pits and vesicles which entrap specific macromolecules during receptor-mediated endocytosis. The clathrin molecule has a triskelion shape. Each clathrin triskelion is composed of three identical heavy chains (CLTC) (160-190 kDa) and three light chains of two types, LCA (CLTA) and LCB (CLTB) (30-40 kDa). The heavy chain provides the structural backbone of the clathrin lattice. (PMID: 9133677)

Notable Publications

Author	Pubmed ID	Journal	Application
Nerea Ugidos	31620119	Front Immunol	WB
Ruihan Shi	33679671	Front Microbiol	WB
Myoung Sup Shim	39985671	Cell Mol Life Sci	IF

Storage

Storage:

Store at -20°C. Stable for one year after shipment.

Storage Buffer:

PBS with 0.02% sodium azide and 50% glycerol, pH7.3

Aliquoting is unnecessary for -20°C storage

For technical support and original validation data for this product please contact:

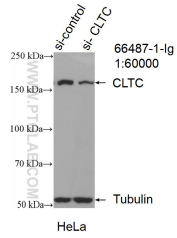
T: 4006900926

E: Proteintech-CN@ptglab.com

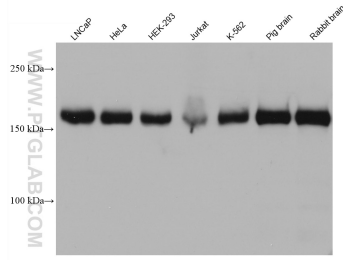
W: ptgcn.com

This product is exclusively available under Proteintech Group brand and is not available to purchase from any other manufacturer.

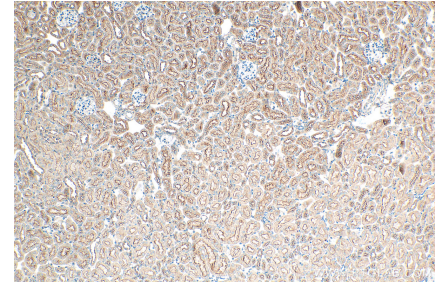
Selected Validation Data



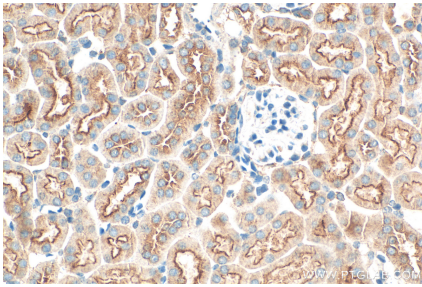
WB result of CLTC antibody (66487-1-Ig; 1:60000; incubated at room temperature for 1.5 hours) with sh-Control and sh-CLTC transfected HeLa cells.



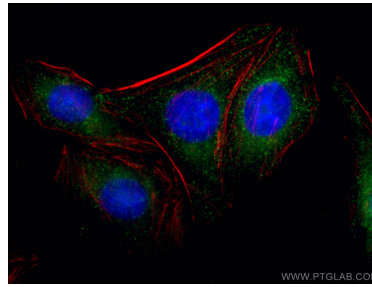
Various lysates were subjected to SDS PAGE followed by western blot with 66487-1-Ig (CLTC antibody) at dilution of 1:50000 incubated at room temperature for 1.5 hours.



Immunohistochemical analysis of paraffin-embedded mouse kidney tissue slide using 66487-1-Ig (CLTC antibody) at dilution of 1:2000 (under 10x lens). Heat mediated antigen retrieval with Tris-EDTA buffer (pH 9.0).



Immunohistochemical analysis of paraffin-embedded mouse kidney tissue slide using 66487-1-Ig (CLTC antibody) at dilution of 1:2000 (under 40x lens). Heat mediated antigen retrieval with Tris-EDTA buffer (pH 9.0).



Immunofluorescent analysis of (-20°C Ethanol) fixed HepG2 cells using CLTC antibody (66487-1-Ig; Clone: 1B3D7) at dilution of 1:800 and CoraLite® 488-Conjugated Goat Anti-Mouse IgG(H+L), CL594-Phalloidin (red).