

For Research Use Only

ACAP1 Monoclonal antibody

Catalog Number: 66596-1-Ig

Featured Product

1 Publications



Basic Information

Catalog Number:

66596-1-Ig

Size:

1600 ug/ml

Source:

Mouse

Isotype:

IgG1

Immunogen Catalog Number:

AG14254

GenBank Accession Number:

BC018543

GeneID (NCBI):

9744

UNIPROT ID:

Q15027

Full Name:

ArfGAP with coiled-coil, ankyrin repeat and PH domains 1

Calculated MW:

740 aa, 82 kDa

Observed MW:

81 kDa

Purification Method:

Protein G purification

CloneNo.:

1B4C9

Recommended Dilutions:

WB 1:1000-1:6000

IHC 1:150-1:600

Applications

Tested Applications:

WB, IHC, ELISA

Cited Applications:

WB

Species Specificity:

human

Cited Species:

human

Note-IHC: suggested antigen retrieval with TE buffer pH 9.0; (*) Alternatively, antigen retrieval may be performed with citrate buffer pH 6.0

Positive Controls:

WB : Jurkat cells, HL-60 cells, K-562 cells

IHC : human breast cancer tissue,

Background Information

ACAP1, also named as Centaurin-beta-1, is a 740 amino acid protein, which is expressed Highly in lung and spleen. ACAP1 as a GTPase-activating protein (GAP) for ADP ribosylation factor 6 (ARF6) is required for clathrin-dependent export of proteins from recycling endosomes to trans-Golgi network and cell surface and required for regulated export of ITGB1 from recycling endosomes to the cell surface and ITGB1-dependent cell migration.

Notable Publications

Author	Pubmed ID	Journal	Application
Qiyi Yi	36497434	Cancers (Basel)	WB

Storage

Storage:

Store at -20°C. Stable for one year after shipment.

Storage Buffer:

PBS with 0.02% sodium azide and 50% glycerol pH 7.3.

Aliquoting is unnecessary for -20°C storage

For technical support and original validation data for this product please contact:

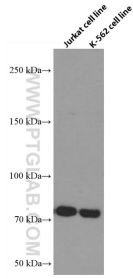
T: 4006900926

E: Proteintech-CN@ptglab.com

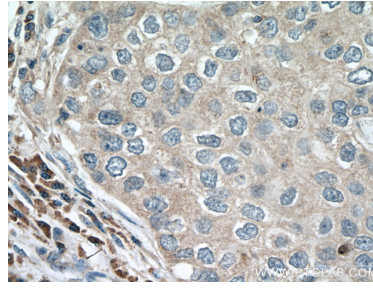
W: ptgcn.com

This product is exclusively available under Proteintech Group brand and is not available to purchase from any other manufacturer.

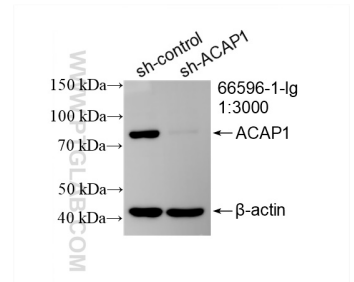
Selected Validation Data



Various lysates were subjected to SDS PAGE followed by western blot with 66596-1-Ig (ACAP1 antibody) at dilution of 1:3000 incubated at room temperature for 1.5 hours.



Immunohistochemical analysis of paraffin-embedded human breast cancer tissue slide using 66596-1-Ig (ACAP1 antibody) at dilution of 1:300 (under 40x lens. Heat mediated antigen retrieval with Tris-EDTA buffer (pH 9.0).



WB result of ACAP1 antibody (66596-1-Ig; 1:3000; incubated at room temperature for 1.5 hours) with sh-Control and sh-ACAP1 transfected Jurkat cells.