

For Research Use Only

# BBS10 Monoclonal antibody

Catalog Number: 66679-1-Ig



## Basic Information

<b>Catalog Number:</b> 66679-1-Ig	<b>GenBank Accession Number:</b> BC013795	<b>Purification Method:</b> Protein A purification
<b>Size:</b> 1800 µg/ml	<b>GeneID (NCBI):</b> 79738	<b>CloneNo.:</b> 4C6A10
<b>Source:</b> Mouse	<b>UNIPROT ID:</b> Q8TAM1	<b>Recommended Dilutions:</b> WB 1:1000-1:6000 IHC 1:150-1:600
<b>Isotype:</b> IgG2b	<b>Full Name:</b> Bardet-Biedl syndrome 10	
<b>Immunogen Catalog Number:</b> AG17960	<b>Calculated MW:</b> 81 kDa	
	<b>Observed MW:</b> 81 kDa	

## Applications

### Tested Applications:

IHC, WB, ELISA

### Species Specificity:

Human

**Note-IHC: suggested antigen retrieval with TE buffer pH 9.0; (\*) Alternatively, antigen retrieval may be performed with citrate buffer pH 6.0**

### Positive Controls:

WB : NCI-H1299 cells, NCCIT cells, L02 cells, HepG2 cells

IHC : human liver cancer tissue,

## Background Information

BBS10, also named as C12orf58, belongs to the TCP-1 chaperonin family. It is probable molecular chaperone. Assists the folding of proteins upon ATP hydrolysis. As part of the BBS/CCT complex, BBS10 may play a role in the assembly of BBSome, a complex involved in ciliogenesis regulating transports vesicles to the cilia. Involved in adipogenic differentiation. (PMID: 20080638, 19190184) Defects in BBS10 are the cause of Bardet-Biedl syndrome type 10 (BBS10).

## Storage

### Storage:

Store at -20°C. Stable for one year after shipment.

### Storage Buffer:

PBS with 0.02% sodium azide and 50% glycerol pH 7.3.

Aliquoting is unnecessary for -20°C storage

For technical support and original validation data for this product please contact:

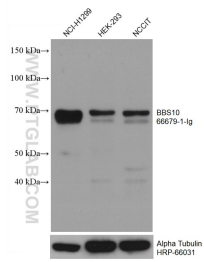
T: 4006900926

E: Proteintech-CN@ptglab.com

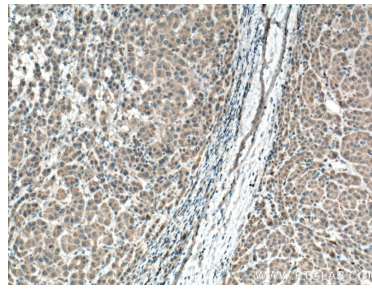
W: ptgcn.com

**This product is exclusively available under Proteintech Group brand and is not available to purchase from any other manufacturer.**

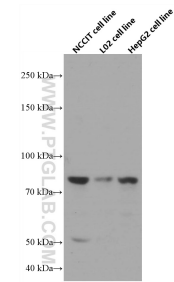
## Selected Validation Data



Various lysates were subjected to SDS PAGE followed by western blot with 66679-1-Ig (BBS10 antibody) at dilution of 1:3000 incubated at room temperature for 1.5 hours. The membrane was stripped and reblotted with HRP-conjugated Alpha Tubulin Monoclonal antibody (HRP-66031) as loading control.



Immunohistochemical analysis of paraffin-embedded human liver cancer tissue slide using 66679-1-Ig (BBS10 antibody) at dilution of 1:300 (under 10x lens. Heat mediated antigen retrieval with Tris-EDTA buffer (pH 9.0).



Various lysates were subjected to SDS PAGE followed by western blot with 66679-1-Ig (BBS10 antibody) at dilution of 1:3000 incubated at room temperature for 1.5 hours.