

For Research Use Only

# Betacellulin Monoclonal antibody

Catalog Number: 66683-1-Ig **2 Publications**



## Basic Information

<b>Catalog Number:</b> 66683-1-Ig	<b>GenBank Accession Number:</b> BC011618	<b>Purification Method:</b> Protein G purification
<b>Concentration:</b> 1800 ug/ml	<b>GeneID (NCBI):</b> 685	<b>CloneNo.:</b> 2H5E8
<b>Source:</b> Mouse	<b>UNIPROT ID:</b> P35070	<b>Recommended Dilutions:</b> WB 1:5000-1:10000
<b>Isotype:</b> IgG1	<b>Full Name:</b> betacellulin	
<b>Immunogen Catalog Number:</b> AG26724	<b>Calculated MW:</b> 20 kDa	
	<b>Observed MW:</b> 20 kDa	

## Applications

<b>Tested Applications:</b> WB, ELISA	<b>Positive Controls:</b> WB : MCF-7 cells, NCCIT cells, A549 cells, MDA-MB-231 cells, T-47D cells, PC-3 cells, BxPC-3 cells, DU 145 cells
<b>Cited Applications:</b> WB, IHC	
<b>Species Specificity:</b> human	
<b>Cited Species:</b> human	

## Background Information

Betacellulin (BTC), a member of the epidermal growth factor (EGF) family, binds and activates ErbB1 and ErbB4 homodimers. BTC is synthesized primarily as a transmembrane precursor, which is then processed to mature molecule by proteolytic events. This protein is a ligand for the EGF receptor. BTC was expressed in tumors and involved in tumor growth progression.

## Notable Publications

Author	Pubmed ID	Journal	Application
Ting Shen	35846125	Front Genet	WB, IHC
Yingjian Huang	34358528	J Invest Dermatol	WB

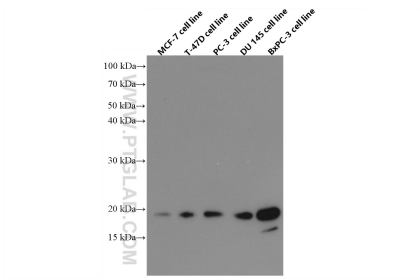
## Storage

**Storage:**  
Store at -20°C. Stable for one year after shipment.  
**Storage Buffer:**  
PBS with 0.02% sodium azide and 50% glycerol pH 7.3.  
Aliquoting is unnecessary for -20°C storage

For technical support and original validation data for this product please contact:  
T: 4006900926 E: Proteintech-CN@ptglab.com W: ptgcn.com

**This product is exclusively available under Proteintech Group brand and is not available to purchase from any other manufacturer.**

## Selected Validation Data



Various lysates were subjected to SDS PAGE followed by western blot with 66683-1-Ig (BTC antibody) at dilution of 1:10000 incubated at room temperature for 1.5 hours.