

For Research Use Only

PLA2G4D Monoclonal antibody

Catalog Number: 66752-1-Ig



Basic Information

Catalog Number:

66752-1-Ig

Size:

1800 µg/ml

Source:

Mouse

Isotype:

IgG1

Immunogen Catalog Number:

AG4178

GenBank Accession Number:

BC034571

GeneID (NCBI):

283748

UNIPROT ID:

Q86XP0

Full Name:

phospholipase A2, group IVD
(cytosolic)

Calculated MW:

818 aa, 92 kDa

Observed MW:

92 kDa

Purification Method:

Protein G purification

CloneNo.:

2E2A10

Recommended Dilutions:

WB 1:1000-1:4000

IF/ICC 1:200-1:800

Applications

Tested Applications:

IF/ICC, WB, ELISA

Species Specificity:

Human

Positive Controls:

WB : HepG2 cells, L02 cells, SMMC-7721 cells

IF/ICC : HepG2 cells,

Background Information

PLA2G4D (Cytosolic phospholipase A2 delta) belongs to the phospholipase A2 enzyme family, catalyzes the hydrolysis of glycerophospholipids at the sn-2 position and then liberate free fatty acids and lysophospholipids. PLA2G4D expression is specifically upregulated in the upper epidermis of patients with inflammatory skin diseases (PMID:14709560).

Storage

Storage:

Store at -20°C. Stable for one year after shipment.

Storage Buffer:

PBS with 0.02% sodium azide and 50% glycerol pH 7.3.

Aliquoting is unnecessary for -20°C storage

For technical support and original validation data for this product please contact:

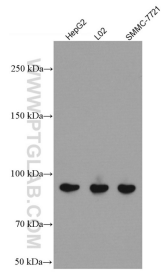
T: 4006900926

E: Proteintech-CN@ptglab.com

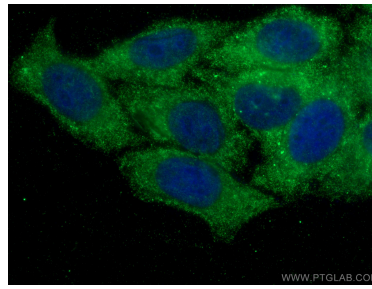
W: ptgcn.com

This product is exclusively available under Proteintech Group brand and is not available to purchase from any other manufacturer.

Selected Validation Data



Various lysates were subjected to SDS PAGE followed by western blot with 66752-1-Ig (PLA2G4D antibody) at dilution of 1:3000 incubated at room temperature for 1.5 hours.



Immunofluorescent analysis of (-20°C Ethanol) fixed HepG2 cells using PLA2G4D antibody (66752-1-Ig, Clone: 2E2A10) at dilution of 1:400 and CoraLite®488-Conjugated AffiniPure Goat Anti-Mouse IgG(H+L).