

For Research Use Only

ADH1B Monoclonal antibody

Catalog Number: 66939-1-Ig

Featured Product

7 Publications



Basic Information

Catalog Number:

66939-1-Ig

Concentration:

2200 µg/ml

Source:

Mouse

Isotype:

IgG2a

Immunogen Catalog Number:

AG10630

GenBank Accession Number:

BC033009

GeneID (NCBI):

125

UNIPROT ID:

P00325

Full Name:

alcohol dehydrogenase 1B (class I),
beta polypeptide

Calculated MW:

375 aa, 40 kDa

Observed MW:

35-40 kDa

Purification Method:

Protein A purification

CloneNo.:

1F1B4

Recommended Dilutions:

WB 1:2000-1:10000

IHC 1:1000-1:4000

IF/ICC 1:200-1:800

Applications

Tested Applications:

WB, IHC, IF/ICC, ELISA

Cited Applications:

WB, IHC, IF

Species Specificity:

Human, Mouse, Rat, Pig

Cited Species:

human, mouse

Note-IHC: suggested antigen retrieval with TE buffer pH 9.0; (*) Alternatively, antigen retrieval may be performed with citrate buffer pH 6.0

Positive Controls:

WB: L02 cells, HepG2 cells, pig liver tissue, rat liver tissue, SMMC-7721 cells, HuH-7 cells

IHC: human liver cancer tissue,

IF/ICC: HepG2 cells,

Background Information

The ADH1B gene encodes the beta subunit of class I alcohol dehydrogenase (ADH), an enzyme that catalyzes the rate-limiting step for ethanol metabolism: the oxidation of alcohol to acetaldehyde. Class 1 ADH is a homo- or heterodimeric molecule, formed by the association of 3 types of class I ADH subunits, alpha (ADH1A), beta, and gamma (ADH1C). ADH1B is also named as ADH2 and belongs to the zinc-containing alcohol dehydrogenase family. This protein can exist as a homodimer (PMID:19365573).

Notable Publications

Author	Pubmed ID	Journal	Application
Chengmao Xie	35938015	Front Genet	WB
Chi-Yao Hsueh	35198889	iScience	WB, IHC
Limin Gao	35115920	Front Pharmacol	WB

Storage

Storage:

Store at -20°C. Stable for one year after shipment.

Storage Buffer:

PBS with 0.02% sodium azide and 50% glycerol pH 7.3.

Aliquoting is unnecessary for -20°C storage

For technical support and original validation data for this product please contact:

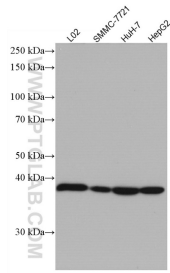
T: 4006900926

E: Proteintech-CN@ptglab.com

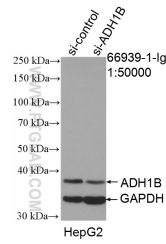
W: ptgcn.com

This product is exclusively available under Proteintech Group brand and is not available to purchase from any other manufacturer.

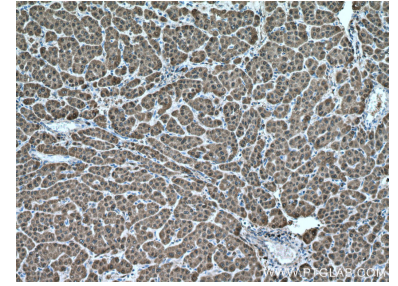
Selected Validation Data



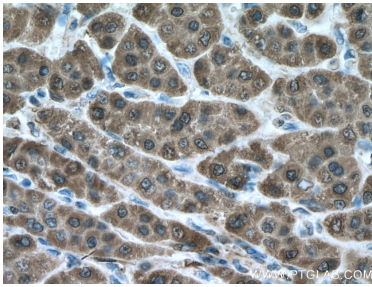
Various lysates were subjected to SDS PAGE followed by western blot with 66939-1-Ig (ADH1B antibody) at dilution of 1:5000 incubated at room temperature for 1.5 hours.



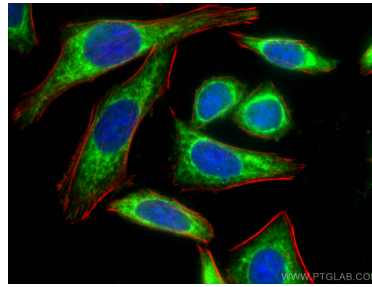
WB result of ADH1B antibody (66939-1-Ig; 1:50000; incubated at room temperature for 1.5 hours) with sh-Control and sh-ADH1B transfected HepG2 cells.



Immunohistochemical analysis of paraffin-embedded human liver cancer tissue slide using 66939-1-Ig (ADH1B antibody) at dilution of 1:2000 (under 10x lens. Heat mediated antigen retrieval with Tris-EDTA buffer (pH 9.0).



Immunohistochemical analysis of paraffin-embedded human liver cancer tissue slide using 66939-1-Ig (ADH1B antibody) at dilution of 1:2000 (under 40x lens. Heat mediated antigen retrieval with Tris-EDTA buffer (pH 9.0).



Immunofluorescent analysis of (-20°C Ethanol) fixed HepG2 cells using ADH1B antibody (66939-1-Ig, Clone: 1F1B4) at dilution of 1:400 and CoraLite® 488-Conjugated Goat Anti-Mouse IgG(H+L), CL594-Phalloidin (red).