

ABHD5 Monoclonal antibody

Catalog Number: 67779-1-Ig

Basic Information

Catalog Number: 67779-1-Ig	GenBank Accession Number: BC021958	CloneNo.: 2B12C2
Size: 1000 µg/ml	GeneID (NCBI): 51099	Recommended Dilutions: WB 1:1000-1:6000 IF 1:200-1:800
Source: Mouse	Full Name: abhydrolase domain containing 5	
Isotype: IgG2b	Calculated MW: 349 aa, 39 kDa	
Purification Method: Protein A purification	Observed MW: 39 kDa	
Immunogen Catalog Number: AG30256		

Applications

Tested Applications: IF, WB, ELISA	Positive Controls:
Species Specificity: Human	WB : LNCaP cells, HeLa cells, HEK-293 cells, HepG2 cells, Jurkat cells, K-562 cells, THP-1 cells, Raji cells
	IF : HepG2 cells;

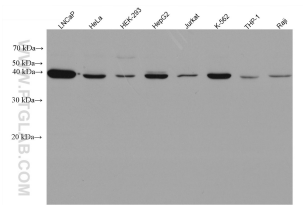
Background Information

ABHD5, also named as NCIE2 and CGI-58, belongs to the peptidase S33 family. ABHD4/ABHD5 subfamily. It is a Lysophosphatidic acid acyltransferase which functions in phosphatidic acid biosynthesis. ABHD5 may regulate the cellular storage of triacylglycerol through activation of the phospholipase PNPLA2. It is involved in keratinocyte differentiation. ABHD5 is an evolutionarily conserved protein that acts as a potent activator of Atg1. Abhd5 is expressed in several tissues that lack Plin, raising the possibility that this co-activator might interact with additional PAT proteins. Abhd5 and Mdp are highly colocalized on individual lipid droplets. (PMID:19064991) Defects in ABHD5 are the cause of Chanarin-Dorfman syndrome (CDS).

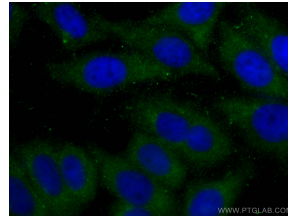
Storage

Storage:
Store at -20°C. Stable for one year after shipment.
Storage Buffer:
PBS with 0.1% sodium azide and 50% glycerol pH 7.3.
Aliquoting is unnecessary for -20°C storage

Selected Validation Data



Various lysates were subjected to SDS PAGE followed by western blot with 67779-1-Ig (ABHD5 antibody) at dilution of 1:3000 incubated at room temperature for 1.5 hours.



Immunofluorescent analysis of (-20°C Ethanol) fixed HepG2 cells using ABHD5 antibody (67779-1-Ig, Clone: 2B12C2) at dilution of 1:400 and CoraLite®488-Conjugated AffiniPure Goat Anti-Mouse IgG(H+L).