

For Research Use Only

CoraLite® Plus 488-conjugated Alpha cardiac muscle actin specific Monoclonal antibody

Catalog Number: CL488-66125



Basic Information

Catalog Number:

CL488-66125

Concentration:

1000 ug/ml

Source:

Mouse

Isotype:

IgG1

GenBank Accession Number:

NM_005159

GeneID (NCBI):

70

UNIPROT ID:

P68032

Full Name:

actin, alpha, cardiac muscle 1

Calculated MW:

42 kDa

Purification Method:

Protein G purification

CloneNo.:

1F2B9

Recommended Dilutions:

IF-P 1:50-1:500

Excitation/Emission maxima

wavelengths:

493 nm / 522 nm

Applications

Tested Applications:

IF-P

Species Specificity:

human, mouse, rat, pig

Positive Controls:

IF-P : mouse heart tissue,

Background Information

Actins are highly conserved proteins that are involved in various types of cell motility and are ubiquitously expressed in all eukaryotic cells. The ACTC1 gene encodes cardiac muscle alpha-actin, the predominant actin isoform in adult heart, which interacts with a variety of proteins to produce the force for muscle contraction. This antibody is specific to the ACTC1. It does not cross-react with other actin isoforms. The antibody is conjugated with CL488, Ex/Em 488 nm/515 nm.

Storage

Storage:

Store at -20°C. Avoid exposure to light. Stable for one year after shipment.

Storage Buffer:

PBS with 50% glycerol, 0.05% Proclin300, 0.5% BSA, pH7.3

Aliquoting is unnecessary for -20°C storage

For technical support and original validation data for this product please contact:

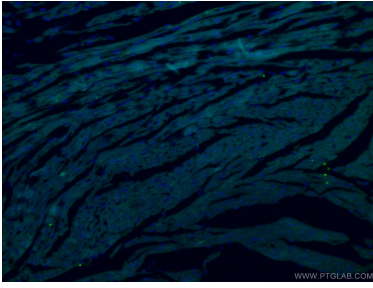
T: 4006900926

E: Proteintech-CN@ptglab.com

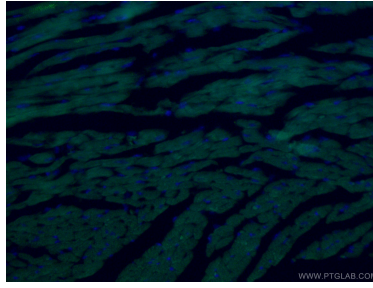
W: ptgcn.com

This product is exclusively available under Proteintech Group brand and is not available to purchase from any other manufacturer.

Selected Validation Data



Immunofluorescent analysis of (4% PFA) fixed mouse heart tissue using CL488-66125 (ACTC1-specific antibody) at dilution of 1:100.



Immunofluorescent analysis of (4% PFA) fixed mouse heart tissue using CL488-66125 (ACTC1-specific antibody) at dilution of 1:100.