

For Research Use Only

# CoraLite® Plus 488-conjugated ACE2 Monoclonal antibody

Catalog Number:CL488-66699

Featured Product

3 Publications



## Basic Information

**Catalog Number:**

CL488-66699

**Size:**

1000 µg/ml

**Source:**

Mouse

**Isotype:**

IgG1

**Immunogen Catalog Number:**

AG15554

**GenBank Accession Number:**

BC048094

**GeneID (NCBI):**

59272

**UNIPROT ID:**

Q9BYF1

**Full Name:**

angiotensin I converting enzyme  
(peptidyl-dipeptidase A) 2

**Calculated MW:**

805 aa, 92 kDa

**Purification Method:**

Protein G purification

**CloneNo.:**

2F12A4

**Recommended Dilutions:**

IF-P 1:50-1:500

**Excitation/Emission maxima  
wavelengths:**

493 nm / 522 nm

## Applications

**Tested Applications:**

IF-P

**Cited Applications:**

IF

**Species Specificity:**

Human, mouse

**Cited Species:**

human, rat

**Positive Controls:**

IF-P: human kidney tissue,

## Background Information

ACE2 (Angiotensin-converting enzyme 2), also named as ACEH, is a zinc metalloprotease of the ACE family and a critical regulator of the reninangiotensin system. ACE2 has a more restricted tissue distribution than ACE, being found predominantly in the heart, kidneys, and testes although low levels have been detected in a variety of tissues (PMID:15983030). ACE2 has been shown to be a functional receptor of the human coronaviruses SARS-CoV and SARS-CoV-2 (PMID: 32142651). The expression level and expression pattern of human ACE2 in different tissues might be critical for the susceptibility, symptoms, and outcome of 2019-nCoV/SARS-CoV-2 infection (PMID: 32133153). It can be used as a potential therapeutic target of SARS-CoV-2 (PMID: 32125455). The calculated molecular weight of ACE2 is 92kDa but it migrates to 120kDa due to N-glycosylation (PMID:16166094). Sometimes, several cleaved fragments can also be detected as 75kDa, 50 kDa or 37kDa (PMID: 29561187, 22009550, 30759273). It has 2 isoforms produced by alternative splicing. This antibody is specific to ACE2.

## Notable Publications

Author	Pubmed ID	Journal	Application
Feng Xie	34665481	Adv Mater	FC
Shouwen Du	35045269	J Virol	IF
Lan Li	39422032	Mol Med Rep	IF

## Storage

**Storage:**

Store at -20°C. Avoid exposure to light. Stable for one year after shipment.

**Storage Buffer:**

PBS with 50% Glycerol, 0.05% Proclin300, 0.5% BSA, pH 7.3.

Aliquoting is unnecessary for -20°C storage

For technical support and original validation data for this product please contact:

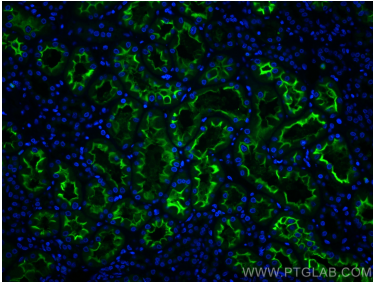
T: 4006900926

E: Proteintech-CN@ptglab.com

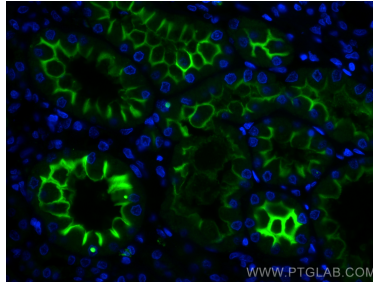
W: ptgcn.com

This product is exclusively available under Proteintech Group brand and is not available to purchase from any other manufacturer.

## Selected Validation Data



Immunofluorescent analysis of (4% PFA) fixed human kidney tissue using CoraLite® Plus 488 ACE2 antibody (CL488-66699, Clone: 2F12A4 ) at dilution of 1:200.



Immunofluorescent analysis of (4% PFA) fixed human kidney tissue using CoraLite® Plus 488 ACE2 antibody (CL488-66699, Clone: 2F12A4 ) at dilution of 1:200.