

For Research Use Only

# HRP-conjugated Alpha Tubulin Monoclonal antibody

Catalog Number: HRP-66031

Featured Product

138 Publications



## Basic Information

Catalog Number:

HRP-66031

Concentration:

1000 ug/ml

Source:

Mouse

Isotype:

IgG2b

GenBank Accession Number:

BC009314

GeneID (NCBI):

10376

UNIPROT ID:

P68363

Full Name:

tubulin, alpha 1b

Calculated MW:

50 kDa

Observed MW:

52 kDa

Purification Method:

Antigen affinity purification

CloneNo.:

1E4C11

Recommended Dilutions:

WB 1:5000-1:50000

## Applications

Tested Applications:

WB

Cited Applications:

WB, ColP

Species Specificity:

human, mouse, rat

Cited Species:

human, mouse, rat

Positive Controls:

WB : HeLa cells, HEK-293 cells

## Background Information

There are five tubulins in human cells: alpha, beta, gamma, delta, and epsilon. Tubulins are conserved across species. They form heterodimers, which multimerize to form a microtubule filament. An alpha and beta tubulin heterodimer is the basic structural unit of microtubules. The heterodimer does not come apart once formed. The alpha and beta tubulins, which are each about 55 kDa MW, are homologous but not identical. Alpha tubulin is useful for scientists across fields as an internal control due to its high, ubiquitous expression pattern. Tubulin expression may vary according to resistance to antimicrobial and antimitotic drugs. This antibody recognizes Tubulin-Alpha only and it is conjugated with HRP.

Note: Do not add Azium (Sodium Azide or Smite) into the dilution buffer. Azium is the HRP inhibitor which decreases the enzymatic activity of HRP.

## Notable Publications

Author	Pubmed ID	Journal	Application
Immacolata Giordano	34621739	Front Cell Dev Biol	WB
Jiaxi Song	36125175	J Clin Endocrinol Metab	WB
Ruzhi Wei	30278376	Stem Cell Res	WB

## Storage

Storage:

Store at -20°C. Avoid exposure to light. Stable for one year after shipment.

Storage Buffer:

PBS with 50% glycerol, 0.05% Proclin300, 0.5% BSA, pH7.3

Aliquoting is unnecessary for -20°C storage

For technical support and original validation data for this product please contact:

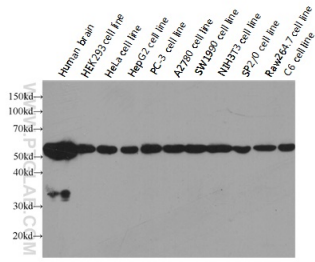
T: 4006900926

E: [Proteintech-CN@ptglab.com](mailto:Proteintech-CN@ptglab.com)

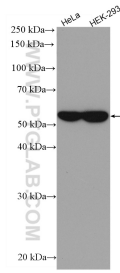
W: [ptgcn.com](http://ptgcn.com)

This product is exclusively available under Proteintech Group brand and is not available to purchase from any other manufacturer.

## Selected Validation Data



Western blot analysis of alpha-tubulin in various tissues and cell lines using Proteintech antibody HRP-60031 at a dilution of 1:5000.



HeLa cells were subjected to SDS PAGE followed by western blot with HRP-66031 (Alpha Tubulin antibody) at dilution of 1:20000 incubated at room temperature for 1.5 hours.