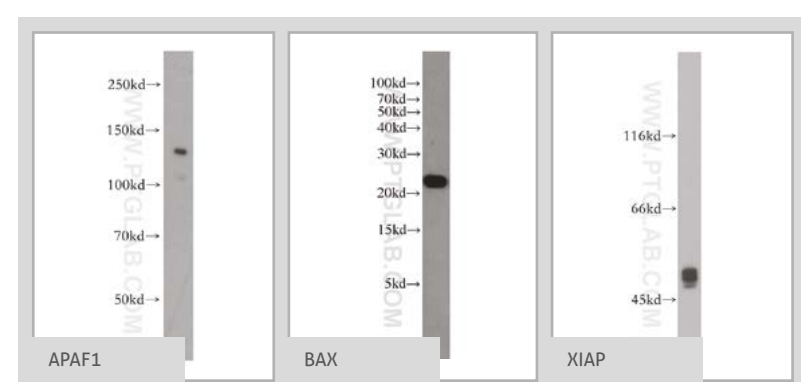


APOPTOSIS PATHWAY

Apoptosis, derived from the Greek word for "falling off" or "dropping off" (like leaves from a tree), is defined by distinct morphological and biochemical changes. Apoptosis plays a crucial role not just in normal development, but also in cancer or neurological diseases. Two main pathways lead to apoptosis: 1. the extrinsic pathway via death receptors and 2. the intrinsic pathway via the mitochondria. Both pathways lead to the activation of caspases (cysteine aspartic acid-specific proteases) which are expressed as inactive precursors or zymogens (pro-caspases) and are proteolytically processed to an active state following an apoptotic stimulus. To date, 14 mammalian caspases have been identified and these can be roughly divided into three functional groups: apoptosis initiators (including caspase-2, -9, -8, -10), apoptosis effectors (including caspase-3, -6, -7), and cytokine maturation caspases (including caspase-1, -4, -5, -11, -12, -13, -14).

Legend	
—	Association
→	Directly Activates
--->	Indirectly Activates
⊥	Inhibits
(P)	Phosphorylates



For more information or other pathways visit ptglab.com

RELATED PRODUCTS

Antibody Name	Catalog Number	Type	Applications
APAF1	21710-1-AP	Rabbit Poly	ELISA, IF, IHC, IP, WB
BAD	10435-1-AP	Rabbit Poly	ELISA, IHC, WB
BAX	14673-1-AP	Rabbit Poly	ELISA, IF, IHC, WB
BAX	25931-1-AP	Rabbit Poly	ELISA, IHC, IP, WB
BAX	50599-1-ig	Rabbit Poly	ELISA, FC, IF, IHC, IP, WB
BAX	60267-1-ig	Mouse Mono	ELISA, IF, IHC, WB
BCL2	12789-1-AP	Rabbit Poly	ELISA, FC, IF, IHC, IP, WB
BCL2	60178-1-ig	Mouse Mono	ELISA, FC, IF, IHC, IP, WB
Bcl-XL	10783-1-AP	Rabbit Poly	ELISA, FC, IF, IHC, IP, WB
Bcl-XL	66020-1-ig	Mouse Mono	ELISA, IF, IHC, WB
BID	10988-1-AP	Rabbit Poly	ELISA, IF, IHC, IP, WB
CASP1/p20/p10	22915-1-AP	Rabbit Poly	ELISA, IF, IHC, WB
CASP2/p18	10436-1-AP	Rabbit Poly	ELISA, IHC, WB
CASP2/p18	24777-1-AP	Rabbit Poly	ELISA, IF, WB
CASP3/p17	19677-1-AP	Rabbit Poly	ELISA, IF, IHC, IP, WB
CASP3 p17-specific	25546-1-AP	Rabbit Poly	ELISA, FC, IF, IHC, WB
CASP4/p20/p10	11856-1-AP	Rabbit Poly	ELISA, IF, IHC, WB
CASP6/p18/p11	10198-1-AP	Rabbit Poly	ELISA, IHC, WB
CASP8/p18	13423-1-AP	Rabbit Poly	ELISA, IF, IHC, IP, WB
CASP8/p18	66093-1-ig	Mouse Mono	ELISA, IF, IHC, IP, WB

Antibody Name	Catalog Number	Type	Applications
CASP9/p35/p10	10380-1-AP	Rabbit Poly	ELISA, FC, IF, IHC, IP, WB
CASP9/p35/p10	23821-1-AP	Rabbit Poly	ELISA, IF, IHC, WB
CASP9/p35/p10	66169-1-ig	Mouse Mono	ELISA, IF, IHC, IP, WB
CASP10/p23/17/p12	14311-1-AP	Rabbit Poly	ELISA, IF, IHC, IP, WB
CASP12	55238-1-AP	Rabbit Poly	ELISA, IF, IHC, IP, WB
cIAP1	10022-1-AP	Rabbit Poly	ELISA, IF, IHC, WB
FAS/CD95	13098-1-AP	Rabbit Poly	ELISA, FC, IF, IHC, IP, WB
FAS/CD95	60196-1-ig	Mouse Mono	ELISA, FC, IHC, WB
MCL1-specific	15825-1-AP	Rabbit Poly	ELISA, IHC
MCL1	16225-1-AP	Rabbit Poly	ELISA, IHC, IP, WB
MCL1	66026-1-ig	Mouse Mono	ELISA, IF, IHC, WB
PUMA	55120-1-AP	Rabbit Poly	ELISA, IHC, IP, WB
SURVIVIN	10508-1-AP	Rabbit Poly	ELISA, IF, IHC, IP, WB
SURVIVIN-specific	19119-1-AP	Rabbit Poly	ELISA, IF, IHC
TNFR1	21574-1-AP	Rabbit Poly	ELISA, FC, IF, IHC, WB
TNFR1	60192-1-ig	Mouse Mono	ELISA, FC, IHC, WB
UPF3A	17114-1-AP	Rabbit Poly	ELISA, IF, IHC, WB
XIAP	10037-1-ig	Rabbit Poly	ELISA, IF, IHC, WB
XIAP	23453-1-AP	Rabbit Poly	ELISA, WB

This number shows the amount of times our antibody has been cited in a publication.

CONTACT DETAILS

www.ptglab.com

PROTEINTECH GROUP

US Head Office

A: Proteintech Group, Inc.
5400 Pearl Street,
Rosemont, IL, 60018,
USA
T: 1 (888) 4PTGLAB,
(1-888-478-4522)
(toll free in USA),
or 1(312) 455-8498
(outside USA)
F: 1 (312) 455-8408
E: proteintech@ptglab.com

PROTEINTECH EUROPE

United Kingdom

A: Proteintech Europe, Inc.
4th Floor
125 Deansgate
Manchester
M3 3WF
T: +44 (161) 839-5007
F: +44 (161) 241-5103
E: europe@ptglab.com

PROTEINTECH China Office

A: Wuhan Sanying Biotechnologies,
D3-3, No.666 Caixin Avenue,
Wuhan East Lake Hi-tech
Development Zone
Wuhan, Hubei, P.R.C.
T: 027-87531629
or 4006-900-926
F: 027-87531627
E: service@ptglab.com

