

## NGF PATHWAY

The balance between cell survival and death is crucial for normal development and adulthood. Uncontrolled survival or death leads to different tumor types and to neuronal diseases like Alzheimer's, Parkinson's or Multiple Sclerosis.

The neurotrophin family of signaling factors comprise nerve growth factor (NGF), brain derived neurotrophic factor (BDNF) and neurotrophins NT-3 and NT-4. These factors are involved in the differentiation and survival of neural cells. The best characterized receptors for these trophic factors are the tropomyosin-related tyrosine kinase receptors TrkA, TrkB, and TrkC, and a member of the tumor necrosis factor receptor family, NGFR (p75NTR).

Neurotrophin/Trk signaling is regulated by connection to a variety of intracellular signaling cascades including the MAPK, PI-3 kinase and PLC pathways, promoting enhanced survival and growth. In contrast, signaling via the p75NTR receptor can result in both, survival or apoptosis. These signaling events play an important role for neural development and additional higher-order activities such as learning and memory.

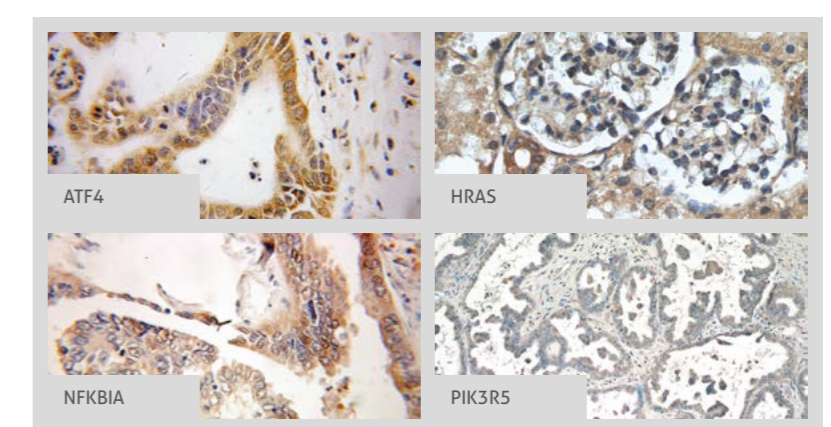
## RELATED PRODUCTS

Antibody Name	Catalog Number	Type	Applications
ARHGDC1A	10509-1-Ig	Rabbit Poly	ELISA, IHC, WB
ATF4 (CREB)	40035-1-AP	Mouse Mono	ChIP, ELISA, IF, IHC, WB
ATF4 (CREB)	10835-1-AP	Rabbit Poly	ELISA, FC, IHC, IP, WB
BAD	10435-1-AP	Rabbit Poly	ELISA, IHC, WB
BAX	50599-2-Ig	Rabbit Poly	ELISA, IHC, IP, WB
CAMK4	15263-1-AP	Rabbit Poly	ELISA, IHC, WB
CDC42	10155-1-AP	Rabbit Poly	ELISA, IF, IHC, WB
CRK	16685-1-AP	Rabbit Poly	ELISA, IF, WB
CSK	17720-1-AP	Rabbit Poly	ELISA, IF, IHC, IP, WB
FRS2	11503-1-AP	Rabbit Poly	ELISA, IF, IHC, WB
GRB2	10254-2-AP	Rabbit Poly	ELISA, IF, IHC, WB
GSK3 beta	22104-1-AP	Rabbit Poly	ELISA, IF, IHC, WB
HRAS (Ras)	18295-1-AP	Rabbit Poly	ELISA, FC, IF, IHC, WB
IKK8	15649-1-AP	Rabbit Poly	ELISA, IF, WB
IRS1	17509-1-AP	Rabbit Poly	ELISA, IF, IHC, IP, WB
MAP2K1 (MEK1/2)	51080-1-AP	Rabbit Poly	ELISA, IHC
MAP2K5 (MEK5)	15758-1-AP	Rabbit Poly	ELISA, IF, IHC, WB
MAP3K5 (MEK1)	14385-1-AP	Rabbit Poly	ELISA, WB
MAPK1 (ERK1/2)	16443-1-AP	Rabbit Poly	ELISA, IF, IHC, WB
MAPK1 (ERK1/2)	51068-1-AP	Rabbit Poly	ELISA, IF, IHC, WB
MAPK7 (ERK5)	10036-2-AP	Rabbit Poly	ELISA, WB
MAPK8 (JNK)	10023-1-AP	Rabbit Poly	ELISA, IF, IHC, IP, WB

Antibody Name	Catalog Number	Type	Applications
NFKB1	14220-1-AP	Rabbit Poly	ELISA, IF, IP, WB
NFKBIA	10368-1-AP	Rabbit Poly	ELISA, FC, IF, IHC, IP, WB
NFKBIA	18220-1-AP	Rabbit Poly	ELISA, IF, IHC, IP, WB
NFKBIA	51066-1-AP	Rabbit Poly	ELISA, IHC, IP, WB
NGFRAP1	10446-1-AP	Rabbit Poly	ELISA, WB
NTF4	12297-1-AP	Rabbit Poly	ELISA, IF, IHC, IP, WB
NTRK2	13129-1-AP	Rabbit Poly	ELISA, IHC, IP, WB
NTRK3	11999-1-AP	Rabbit Poly	ELISA, IF, WB
p53	10442-1-AP	Rabbit Poly	ELISA, IF, IHC, IP, WB
PIK3R5	18262-1-AP	Rabbit Poly	ELISA, IHC, WB
PIK3RS	13329-1-AP	Rabbit Poly	ELISA, IF, IHC, WB
RAF1	51140-1-AP	Rabbit Poly	ELISA, IHC, WB
RhoA	10749-1-AP	Rabbit Poly	ELISA, IF, IHC, WB
Sortilin	12369-1-AP	Rabbit Poly	ELISA, IF, IHC, IP, WB
TRAF6	12809-1-AP	Rabbit Poly	ELISA, IF, IHC, WB
YWHAQ [14-3-3e]	66061-1-Ig	Rabbit Poly	ELISA, FC, IF, IHC, WB

This number shows the amount of times our antibody has been cited in a publication.

For more information or other pathways visit [ptglab.com](http://ptglab.com)



Legend	
—	Association
→	Directly Activates
--->	Indirectly Activates
⊥	Inhibits
+P	Phosphorylates

## CONTACT DETAILS

[www.ptglab.com](http://www.ptglab.com)

### PROTEINTECH GROUP

US Head Office

A: Proteintech Group, Inc.  
5400 Pearl Street,  
Rosemont, IL, 60018,  
USA  
T: 1 (888) 4PTGLAB,  
(1-888-478-4522)  
(toll free in USA),  
or 1(312) 455-8498  
(outside USA)  
F: 1 (312) 455-8408  
E: [proteintech@ptglab.com](mailto:proteintech@ptglab.com)

### PROTEINTECH EUROPE

United Kingdom

A: Proteintech Europe, Inc.  
4th Floor  
196 Deansgate  
Manchester  
M3 3WF  
T: +44 (161) 839-5007  
F: +44 (161) 241-3103  
E: [europe@ptglab.com](mailto:europe@ptglab.com)

### PROTEINTECH CHINA OFFICE

A: Wuhan Sanying Biotechnologies,  
D3-3, No. 666 Gasou Avenue,  
Development Zone  
Wuhan, Hubei, P.R.C.  
T: 027-87531629  
or 4006-900-926  
F: 027-87531627  
E: [service@ptglab.com](mailto:service@ptglab.com)

**proteintech™**  
Antibodies | ELISA kits | Proteins