

mTOR SIGNALING PATHWAY

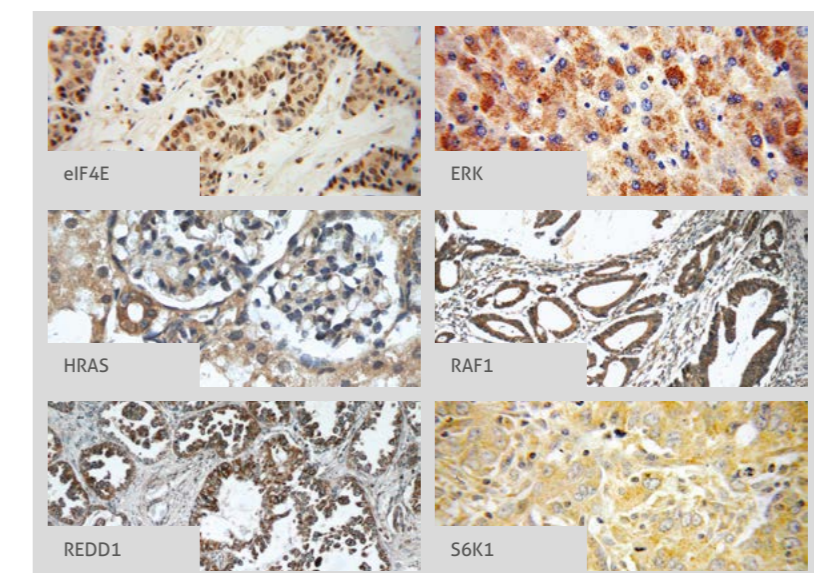
Mammalian target of rapamycin (mTOR) is a serine-threonine kinase that oversees the "health" of the cell. As the point of convergence for numerous metabolic pathways, mTOR integrates information about cellular energy, oxygen, and nutrient levels to coordinate the metabolism of the cell. When activated by these signals, mTOR promotes anabolic activities through phosphorylating eIF4E and S6K1. When energy levels are dwindling, AMPK is activated and, in turn, suppresses mTOR, promoting catabolic activities. Though many of its actions have been elucidated, more exciting functions are discovered each day and it continues to be a central figure in cancer and metabolic research.

Legend	
—	Association
→	Directly Activates
- - - - ->	Indirectly Activates
—	Inhibits
- - - - -	Indirectly Inhibits
⊕	Phosphorylates

RELATED PRODUCTS

Antibody Name	Catalog Number	Type	Applications
AMPK/PRKAA1	10929-1-AP	Rabbit Poly	ELISA, IF, IHC, WB
eIF4B	17917-1-AP	Rabbit Poly	ELISA, IF, IP, WB
eIF4E/4EBP	11149-1-AP	Rabbit Poly	ELISA, FC, IF, IHC, WB
ERK (MAPK1)	16443-1-AP	Rabbit Poly	ELISA, IF, IHC, WB
ERK (MAPK1)	51068-1-AP	Rabbit Poly	ELISA, IF, IHC, WB
HRAS (Ras)	18295-1-AP	Rabbit Poly	ELISA, FC, IF, IHC, WB
LKB1/STK11	10746-1-AP	Rabbit Poly	ELISA, IHC, IP, WB
MEK1	51080-1-AP	Rabbit Poly	ELISA, IHC
PI3K	13329-1-AP	Rabbit Poly	ELISA, IF, IHC, WB
RAF1	51140-1-AP	Rabbit Poly	ELISA, IHC, WB
REDD1	10638-1-AP	Rabbit Poly	ELISA, IF, IHC, IP, WB
RHEB	15924-1-AP	Rabbit Poly	ELISA, IHC, WB
RPS6	14823-1-AP	Rabbit Poly	ELISA, IP, WB
S6K1	14495-1-AP	Rabbit Poly	ELISA, IHC, IP, WB

This number shows the amount of times our antibody has been cited in a publication.



For more information or other pathways visit ptglab.com

CONTACT DETAILS

www.ptglab.com

PROTEINTECH GROUP

US Head Office

A: Proteintech Group, Inc.
5400 Pearl Street,
Rosemont, IL, 60018,
USA
T: 1 (888) 4PTGLAB,
(1-888-478-4522)
(toll free in USA),
or 1 (312) 455-8498
(outside USA)
F: 1 (312) 455-8408
E: proteintech@ptglab.com

PROTEINTECH EUROPE

United Kingdom

A: Proteintech Europe, Inc.
4th Floor
196 Deansgate
Manchester
M3 3WF
T: +44 (161) 839-3007
F: +44 (161) 241-3103
E: europe@ptglab.com

PROTEINTECH China Office

China Office

A: Wuhan Sanying Biotechnologies,
D3-3, No.666 Gaoxin Avenue,
Wuhan East Lake Hi-tech
Development Zone
Wuhan, Hubei, P.R.C.
T: 027-87531629
or 4006-900-926
F: 027-87531627
E: service@ptglab.com

