

VEGF SIGNALING PATHWAY

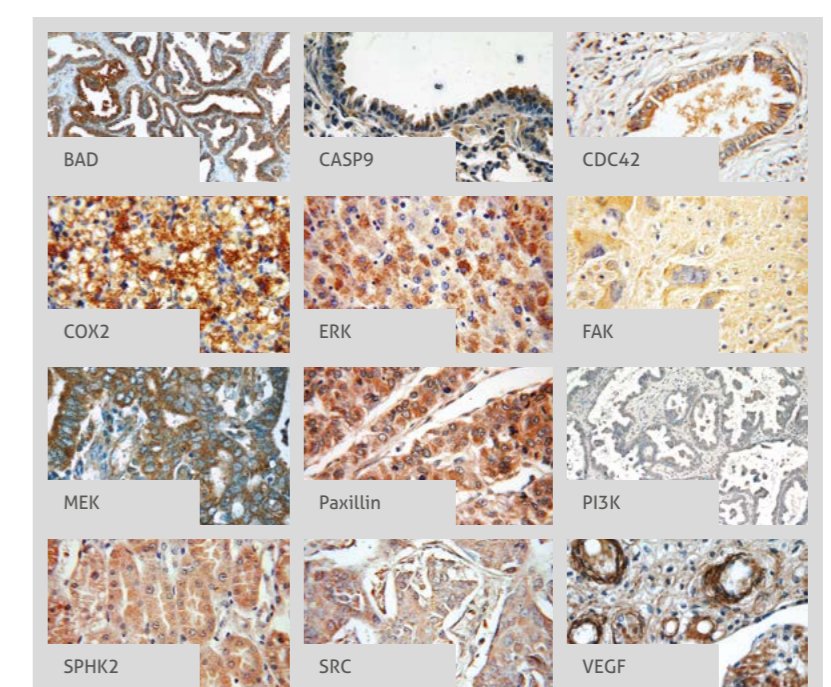
Vascular endothelial growth factor (VEGF) is a major regulator of new blood vessel growth (angiogenesis) and an important regulator of vascular permeability. When VEGF binds to its cognate receptor, a host of different signaling pathways are activated, resulting in promotion of proliferation, migration, survival, and permeability of endothelial cells. VEGF is expressed in virtually all cells in the body and is such a potent regulator of vascular development that its dosage must be tightly regulated. Disruption of a single allele of the VEGF gene in mice results in embryonic lethality due to severe vascular defects. A variety of physiological and pathological processes are associated with up-regulation of components of the VEGF/VEGFR-system, including embryogenesis, the female reproductive cycle, pregnancy, wound healing, tumor growth, diabetic retinopathy and ischemic disease.

Legend	
—	Association
→	Directly Activates
--->	Indirectly Activates
⊣	Inhibits
P	Phosphorylates

RELATED PRODUCTS

Antibody Name	Catalog Number	Type	Applications
BAD	10435-1-AP	Rabbit Poly	ELISA, IHC, WB
CASP9	10380-1-AP	Rabbit Poly	ELISA, FC, IF, IHC, IP, WB
CDC42	10155-1-AP	Rabbit Poly	ELISA, IF, IHC, WB
COX2	12375-1-AP	Rabbit Poly	ELISA, IF, IHC, WB
ERK (MAPK1)	16443-1-AP	Rabbit Poly	ELISA, IF, IHC, WB
ERK (MAPK1)	51068-1-AP	Rabbit Poly	ELISA, IF, IHC, WB
FAK	12656-1-AP	Rabbit Poly	ELISA, IF, IHC, IP, WB
HSP27	18284-1-AP	Rabbit Poly	ELISA, IF, WB
MEK (MAP2K1)	51080-1-AP	Rabbit Poly	ELISA, IHC
p38 (MAPK14)	14064-1-AP	Rabbit Poly	ELISA, IF, IHC, WB
Paxillin	10029-1-Ig	Rabbit Poly	ELISA, IF, IHC, IP, WB
PI3K	13329-1-AP	Rabbit Poly	ELISA, IF, IHC, WB
RAF1	12388-1-AP	Rabbit Poly	ELISA, IHC
SPHK2	17096-1-AP	Rabbit Poly	ELISA, IHC, IP, WB
SRC	11097-1-AP	Rabbit Poly	ELISA, FC, IF, IHC, IP, WB
VEGF	19003-1-AP	Rabbit Poly	ELISA, IF, IHC, IP, WB
VEGFR2	26415-1-AP	Rabbit Poly	ELISA, FC, IHC, WB

This number shows the amount of times our antibody has been cited in a publication.



For more information or other pathways visit ptglab.com

CONTACT DETAILS

www.ptglab.com

PROTEINTECH GROUP

US Head Office

A: Proteintech Group, Inc.
5400 Pearl Street,
Rosemont, IL, 60018,
USA
T: 1 (888) 4PTGLAB,
[1-888-478-4522]
(toll free in USA,
or 1(312) 455-8498
(outside USA)
F: 1 (312) 455-8408
E: proteintech@ptglab.com

PROTEINTECH EUROPE

United Kingdom

A: Proteintech Europe, Inc.
4th Floor
196 Deansgate
Manchester
M3 3WF
T: +44 (161) 839-3007
F: +44 (161) 241-3103
E: europe@ptglab.com

PROTEINTECH CHINA OFFICE

China Office

A: Wuhan Sanying Biotechnologies,
D3-3, No.666 Gaoxin Avenue,
Wuhan East Lake Hi-tech
Development Zone,
Wuhan, Hubei, P.R.C
T: 027-87533629
or 4006-900-926
F: 027-87533627
E: service@ptglab.com

 **proteintech™**
Antibodies | ELISA kits | Proteins