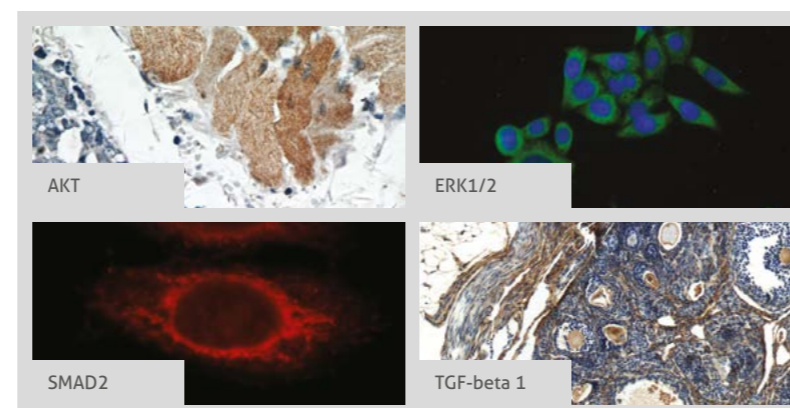


TGF-beta SIGNALING PATHWAY

The members of the TGF-beta family are expressed in distinct temporal and tissue-specific patterns and therefore play an important role in the development, homeostasis and repair of most tissues in organisms. All immune cell lineages, including B-Cell, T-Cell and dendritic cells as well as macrophages secrete TGF-beta, which negatively regulates their proliferation, differentiation and activation by other cytokines. Thus, TGF-beta is a potent immunosuppressor and perturbation of TGF-beta signaling is linked to autoimmunity, inflammation and cancer.



Legend	
—	Association
→	Directly Activates
⊣	Inhibits

For more information or other pathways visit ptglab.com

RELATED PRODUCTS

Antibody Name	Catalog Number	Type	Applications
AKT	10176-1-AP	Rabbit Poly	ELISA, FC, IHC, IP, WB
AP1, JUN, P39	10024-2-AP	Rabbit Poly	ELISA, IF, IHC, IP, WB
ATF2	14834-1-AP	Rabbit Poly	ELISA, IHC, WB
ERK1/2	16443-1-AP	Rabbit Poly	ELISA, IF, IHC, WB
FAST2	20268-1-AP	Rabbit Poly	ELISA, WB
FGF1	17400-1-AP	Rabbit Poly	ELISA, IHC
LTBP1	22065-1-AP	Rabbit Poly	ELISA, IHC, WB
MAP2K3/MKK3	13898-1-AP	Rabbit Poly	ELISA, IP, WB
MAP2K4/MKK4	17340-1-AP	Rabbit Poly	ELISA, IHC, WB
MAP2K6/MKK6	12745-1-AP	Rabbit Poly	ELISA, FC, IHC, WB
MAP4K1/HPK1	23950-1-AP	Rabbit Poly	ELISA, IP, WB
p38 MAPK	14064-1-AP	Rabbit Poly	ELISA, IF, IHC, WB
PIK3CA	21890-1-AP	Rabbit Poly	ELISA, FC, IHC, IP, WB
PP2A	10321-1-AP	Rabbit Poly	ELISA, IHC, WB
RAF1	12388-1-AP	Rabbit Poly	ELISA, IHC

Antibody Name	Catalog Number	Type	Applications
RHOA	10749-1-AP	Rabbit Poly	ELISA, IF, IHC, WB
SMAD1	10429-1-AP	Rabbit Poly	ELISA, IF, IP, WB
SMAD2	12270-1-AP	Rabbit Poly	ELISA, IF, IHC, IP, WB
SMAD3	25494-1-AP	Rabbit Poly	ELISA, IF, IHC, WB
SMAD4	10231-1-AP	Rabbit Poly	ELISA, IHC, IP, WB
SMAD5	12167-1-AP	Rabbit Poly	ELISA, FC, IF, IP, WB
SMAD7	25840-1-AP	Rabbit Poly	ELISA, IHC, WB
TGF-beta 1	18978-1-AP	Rabbit Poly	ELISA, IF, IHC, WB
TGFBR1	55391-1-AP	Rabbit Poly	ELISA, WB
XIAP	10037-1-Ig	Rabbit Poly	ELISA, IF, IHC, WB

This number shows the amount of times our antibody has been cited in a publication.

CONTACT DETAILS

www.ptglab.com

PROTEINTECH GROUP
US Head Office
A: Proteintech Group, Inc.
5400 Pearl Street,
Rosemont, IL, 60018,
USA
T: 1 (888) 4PTGLAB,
(1-888-478-4522)
(toll free in USA),
or 1(312) 455-8498
(outside USA)
F: 1 (312) 455-8408
E: proteintech@ptglab.com

PROTEINTECH EUROPE
United Kingdom
A: Proteintech Europe, Inc.
4th Floor
190 Deansgate
Manchester
M3 3WF
T: +44 (161) 839-3007
F: +44 (161) 241-3103
E: europe@ptglab.com

PROTEINTECH
China Office
A: Wuhan Sanying Biotechnologies,
D3-3, No.666 Gaoxin Avenue,
Wuhan East Lake Hi-tech
Development Zone
Wuhan, Hubei, P.R.C
T: 027-87533629
or 4006-900-926
F: 027-87531627
E: service@ptglab.com

