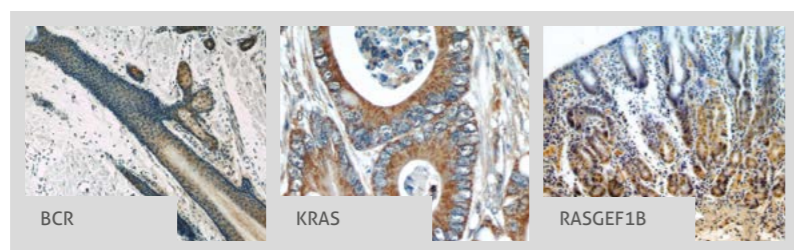


RAS RECEPTOR PATHWAY

RELATED PRODUCTS

Legend	
—	Association
→	Directly Activates
⊣	Inhibits
P	Phosphorylates



For more information or other pathways visit ptglab.com

Antibody Name	Catalog Number	Type	Applications
ACAGA	17299-1-AP	Rabbit Poly	ELISA, IHC, WB
AKT/PKB	10176-2-AP	Rabbit Poly	ELISA, FC, IF, IHC, IP, WB
ANC	18302-1-AP	Rabbit Poly	ELISA, IHC, WB
AP1, JUN, P39	10024-2-AP	Rabbit Poly	ELISA, IF, IHC, IP, WB
ATF2-Specific	14834-1-AP	Rabbit Poly	ELISA, IHC, WB
ATF6	24169-1-AP	Rabbit Poly	ELISA, IF, IHC, IP, WB
BCR	22585-1-AP	Rabbit Poly	ELISA, FC, IF, IHC, IP, WB
CD5	17617-1-AP	Rabbit Poly	ELISA, FC, IF, IHC, IP, WB
CDC42	10155-1-AP	Rabbit Poly	ELISA, IF, IHC, WB
CDK1	10762-1-AP	Rabbit Poly	ELISA, WB
CREB1	12208-1-AP	Rabbit Poly	ELISA, FC, IF, IHC, IP, WB
DOK1	17822-1-AP	Rabbit Poly	ELISA, WB
ELK1	14507-1-AP	Rabbit Poly	ELISA, WB
ELK4/SAP1	14666-1-AP	Rabbit Poly	ELISA, WB
ERK1/2	16463-1-AP	Rabbit Poly	ELISA, IF, IHC, WB
GFR2	21973-1-AP	Rabbit Poly	ELISA, IHC, WB
GRB2	10254-2-AP	Rabbit Poly	ELISA, IHC, WB
GSR/GR	18257-1-AP	Rabbit Poly	ELISA, IF, IP, WB
HRAS-Specific	18295-1-AP	Rabbit Poly	ELISA, FC, IF, IHC, WB
IKKB/IKK1	15649-1-AP	Rabbit Poly	ELISA, IF, WB

Antibody Name	Catalog Number	Type	Applications
JNK	10023-1-AP	Rabbit Poly	ELISA, IF, IHC, IP, WB
KRAS	12063-1-AP	Rabbit Poly	ELISA, FC, IF, IHC, IP, WB
KRAS	60309-1-Ig	Mouse Mono	ELISA, FC, IHC, WB
KRAS-2A-specific	16156-1-AP	Rabbit Poly	ELISA, FC, IF, IHC, WB
KRAS-2B-specific	16155-1-AP	Rabbit Poly	ELISA, FC, IF, IHC, WB
LCK	12477-1-AP	Rabbit Poly	ELISA, IHC, IP, WB
MEF2A	12382-1-AP	Rabbit Poly	ELISA, WB
MEK1	51080-1-AP	Rabbit Poly	ELISA, IHC
MRAS	14213-1-AP	Rabbit Poly	ELISA, IHC, WB
MYC	10828-1-AP	Rabbit Poly	ELISA, IF, IHC, IP, WB
NFκB1	14220-1-AP	Rabbit Poly	ELISA, IF, IP, WB
NRAS	10724-1-AP	Rabbit Poly	ELISA, FC, IF, IHC, WB
p38 MAPK	14064-1-AP	Rabbit Poly	ELISA, IF, IHC, IP, WB
PAK1	21401-1-AP	Rabbit Poly	ELISA, IF, IHC, IP, WB
PKC1	16754-1-AP	Rabbit Poly	ELISA, IF, IHC, IP, WB
PCNA/Cyclin	10205-2-AP	Rabbit Poly	ELISA, FC, IF, IHC, IP, WB
PI3K/PI3K	20583-1-AP	Rabbit Poly	ELISA, FC, IHC, WB
PLD1	18355-1-AP	Rabbit Poly	ELISA, IF, IP, WB
PLK3/CNK	10977-1-AP	Rabbit Poly	ELISA, IF, IHC, WB
PTEN	60300-1-Ig	Rabbit Poly	ELISA, IF, IHC, WB

Antibody Name	Catalog Number	Type	Applications
RASB	11947-1-AP	Rabbit Poly	ELISA, IF, IHC, IP, WB
RAC1	24072-1-AP	Rabbit Poly	ELISA, IF, IHC, WB
RAF1	31140-1-AP	Rabbit Poly	ELISA, IHC, WB
RALA/RAL	13629-1-AP	Rabbit Poly	ELISA, WB
RALBP1	13176-1-AP	Rabbit Poly	ELISA, IP, WB
RAP1B	10840-1-AP	Rabbit Poly	ELISA, WB
RASA1/RASGAP	12935-1-AP	Rabbit Poly	ELISA, IHC, IP, WB
RASA3	14150-1-AP	Rabbit Poly	ELISA, WB
RASGEF1A	17121-1-AP	Rabbit Poly	ELISA, IHC, WB
RASGEF1B	13617-1-AP	Rabbit Poly	ELISA, IHC, WB
RASGRF1	12958-1-AP	Rabbit Poly	ELISA, IP, WB
RHOA	10749-1-AP	Rabbit Poly	ELISA, IF, IHC, WB
RIN1	16388-1-AP	Rabbit Poly	ELISA, IF, IP, WB
RRAS	11647-1-AP	Rabbit Poly	ELISA, IHC, IP, WB
SHC1	12496-1-AP	Rabbit Poly	ELISA, IF, IHC, WB
SOS1	55041-1-AP	Rabbit Poly	ELISA, IF, IP, WB
SYK	22206-1-AP	Rabbit Poly	ELISA, IHC, IP, WB
TEK/TIE2	19157-1-AP	Rabbit Poly	ELISA, IP, WB
VAV1	16364-1-AP	Rabbit Poly	ELISA, IF, IHC, IP, WB
ZAP70	15592-1-AP	Rabbit Poly	ELISA, IF, IHC, IP, WB

This number shows the amount of times our antibody has been cited in a publication.

CONTACT DETAILS

www.ptglab.com

PROTEINTECH GROUP
US Head Office
A: Proteintech Group, Inc.
5400 Pearl Street,
Rosemont, IL, 60018,
USA
T: 1 (888) 4PTGLAB,
(1-888-478-4372)
(toll free in USA),
or 1(312) 455-8498
(outside USA)
F: 1 (312) 455-8408
E: proteintech@ptglab.com

PROTEINTECH EUROPE
United Kingdom
A: Proteintech Europe, Inc.
4th Floor
196 Deansgate
Manchester
M3 3WF
T: +44 (161) 839-3007
F: +44 (161) 241-3103
E: europa@ptglab.com

PROTEINTECH
China Office
A: Wuhan Sanying Biotechnologies,
D3-3, No.666 Gaotian Avenue,
Wuhan East Lake Hi-tech
Development Zone
Wuhan, Hubei, P.R.C.
T: 027-87533629
or 4006-900-926
F: 027-87533627
E: service@ptglab.com

proteintech™
Antibodies | ELISA kits | Proteins