

WNT SIGNALING PATHWAY

The Wnt signaling pathway plays a central role in a whole spectrum of different developmental processes, including cell proliferation, cell migration, and essentially in cell fate and tissue patterning.

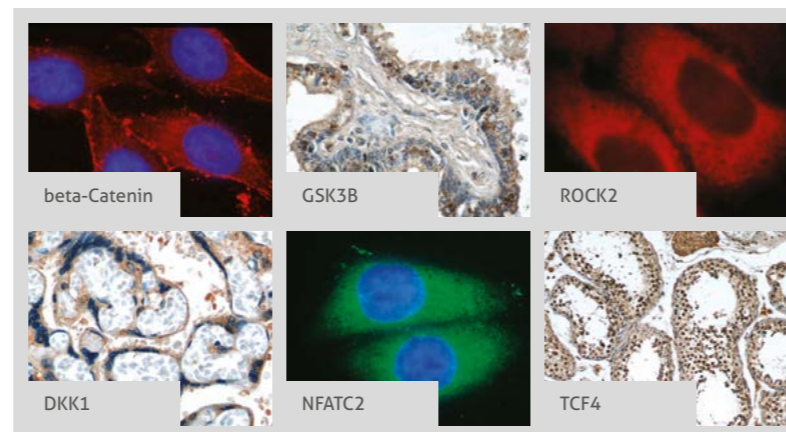
The precise Wnt signaling pathway is a cross-talk between the cell surface receptors present on recipient cells. As an example, the Wnt-5a protein can act as an "ON" or "OFF" ligand and can activate the formation of β -catenin/T-cell factor (TCF) transcriptional complexes and modulate the transcription of Wnt-responsive genes. On the other hand, it can inhibit this β -catenin-dependent pathway upon binding to the tyrosine kinase receptor (ROR2). The Wnt/ β -catenin proteins pathway is also involved in the activation of other intracellular messengers such as calcium fluxes, JNK, and SRC kinases.

As already known, the Wnt pathway is involved in and strongly associated with many disease abnormalities. Aberrant Wnt signaling has been observed in both the normal and cancer stem cell populations of many types of tumor and is implicated in neuroinflammation, oxidative stress response, and synaptic plasticity.

An understanding of Wnt pathway regulation is crucial for prospective disease therapies.

For more information or other pathways visit ptglab.com

Legend	
	Association
	Directly Activates
	Indirectly Activates
	Inhibits
	Ubiquitin
	Phosphorylates



RELATED PRODUCTS

Antibody Name	Catalog Number	Type	Applications
APC	19782-1-AP	Rabbit Poly	ELISA, IHC
AXIN1	16541-1-AP	Rabbit Poly	ELISA, WB
AXIN2	20540-1-AP	Rabbit Poly	ELISA, WB
β -Catenin	51067-2-AP	Rabbit Poly	ELISA, IF, IHC, IP, WB
Casein Kinase 1 epsilon	11230-1-AP	Rabbit Poly	ELISA, IHC
CREB1	12208-1-AP	Rabbit Poly	ELISA, FC, IF, IHC, IP, WB
DKK1	21112-1-AP	Rabbit Poly	ELISA, IF, IHC, WB
DNK2	21051-1-AP	Rabbit Poly	ELISA, IHC, WB
DVL2	12057-1-AP	Rabbit Poly	ELISA, IF, IP, WB
DVL3	13444-1-AP	Rabbit Poly	ELISA, IF, WB
E2A	21242-1-AP	Rabbit Poly	ELISA, WB
Frizzled 10	18175-1-AP	Rabbit Poly	ELISA, IHC, WB
Frizzled 2	24272-1-AP	Rabbit Poly	ELISA, WB
Frizzled 7	16974-1-AP	Rabbit Poly	ELISA, WB
Frizzled 8	55093-1-AP	Rabbit Poly	ELISA, WB
Frizzled 9	13865-1-AP	Rabbit Poly	ELISA, WB
FZDS	21519-1-AP	Rabbit Poly	ELISA, WB
GSK3B	22104-1-AP	Rabbit Poly	ELISA, IF, IHC, IP, WB
GSK3B	51065-1-AP	Rabbit Poly	ELISA, IF, IHC, IP, WB
GSK3B	15113-1-AP	Rabbit Poly	ELISA, IHC, IP, WB
GSK3B	24198-1-AP	Rabbit Poly	ELISA, FC, IF, IHC, WB

Antibody Name	Catalog Number	Type	Applications
HICS	10565-1-AP	Rabbit Poly	ELISA, IF, IHC, IP, WB
HNF1B	12533-1-AP	Rabbit Poly	ELISA, IHC, WB
LEF1	14972-1-AP	Rabbit Poly	ELISA, IHC, WB
LRPS	24899-1-AP	Rabbit Poly	ELISA, IHC, WB
NFATC2	22023-1-AP	Rabbit Poly	ELISA, IHC, WB
PIG2	11555-1-AP	Rabbit Poly	ELISA, IHC, WB
RHOA	10749-1-AP	Rabbit Poly	ELISA, IF, IHC, WB
ROCK1	21850-1-AP	Rabbit Poly	ELISA, IHC, WB
ROCK1-Specific	20247-1-AP	Rabbit Poly	ELISA, IHC, WB
ROCK2	21645-1-AP	Rabbit Poly	ELISA, IF, IHC, WB
ROCK2-Specific	20248-1-AP	Rabbit Poly	ELISA, IF, IHC, WB
SFRP2	12189-1-AP	Rabbit Poly	ELISA, IHC, WB
TCF4	22337-1-AP	Rabbit Poly	ELISA, IHC, IP, WB
WNT2	11160-1-AP	Rabbit Poly	ELISA, IHC, WB
WNT3	17983-1-AP	Rabbit Poly	ELISA, WB
WNT3A	21414-1-AP	Rabbit Poly	ELISA, IHC
WNT5A-B	55184-1-AP	Rabbit Poly	ELISA, IHC, WB
WNT6	24201-1-AP	Rabbit Poly	ELISA, IHC, WB
WNT7A	10605-1-AP	Rabbit Poly	ELISA, IP, WB

This number shows the amount of times our antibody has been cited in a publication.

CONTACT DETAILS

www.ptglab.com

PROTEINTECH GROUP

US Head Office

A: Proteintech Group, Inc.
5400 Pearl Street,
Rosemont, IL, 60018,
USA
T: 1 (888) 4PTGLAB,
(1-888-478-4522)
or 1 (312) 455-8498
(outside USA)
F: 1 (312) 455-8408
E: proteintech@ptglab.com

PROTEINTECH EUROPE

United Kingdom

A: Proteintech Europe, Inc.
4th Floor
196 Deansgate
Manchester
M3 3WF
T: +44 (161) 839 3007
F: +44 (161) 241 3103
E: europe@ptglab.com

PROTEINTECH China Office

China Office

A: Wuhan Sanying Biotechnology,
D3-3, No.666 Gaoxin Avenue,
Wuhan East Lake Hi-tech
Development Zone
Wuhan, Hubei, P.R.C
T: 027-87531629
or 4006-900-926
F: 027-87531627
E: service@ptglab.com

