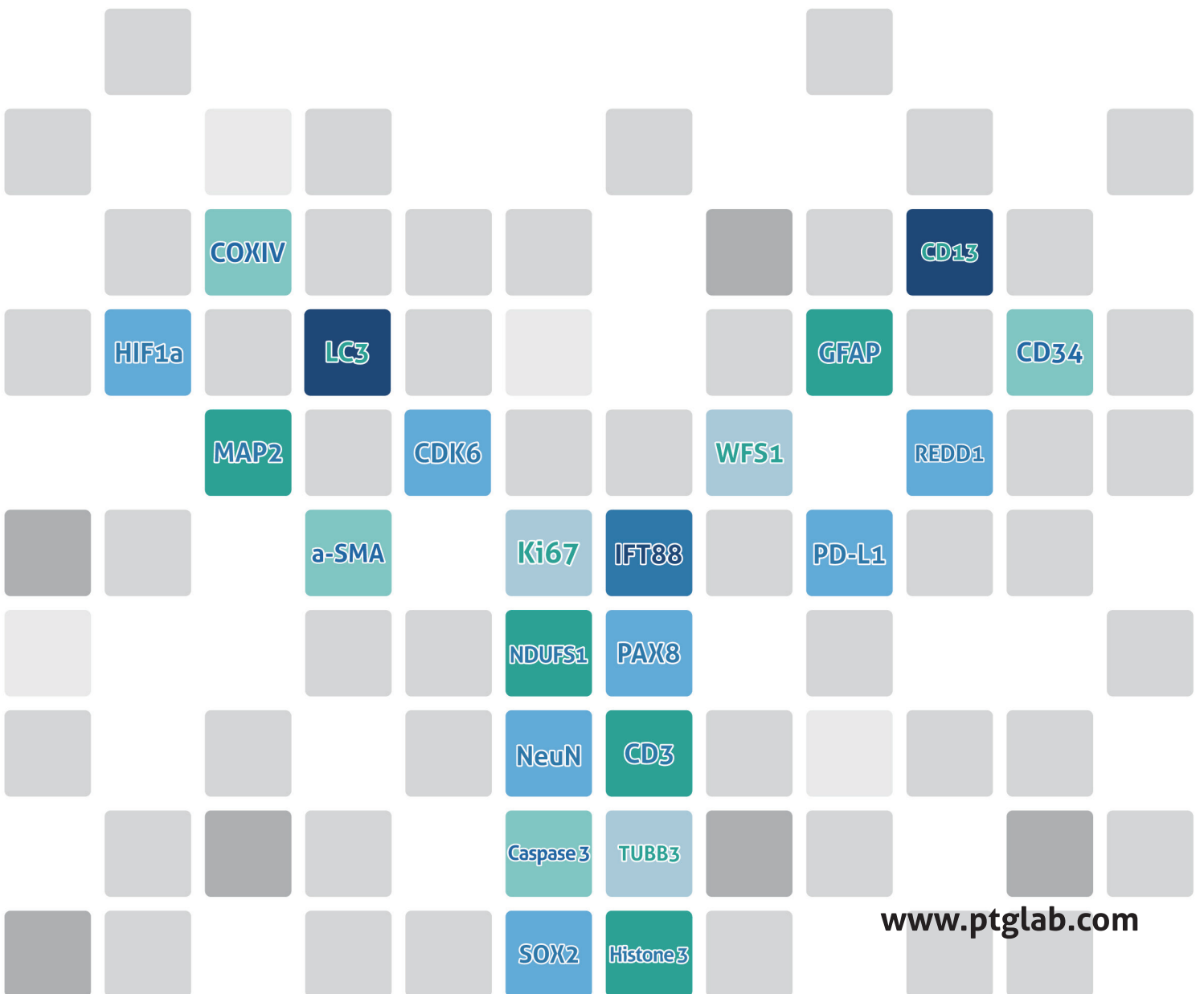


Focus On

Proteintech 臻选抗体



FOREWORD

前言

Proteintech Group, Inc. 于 2002 年在美国芝加哥成立，是一家拥有自主品牌，集研发、生产和销售于一体，专注于抗体、蛋白质和 ELISA 试剂盒等产品的生物技术公司。

作为全球最大的专业抗体生产商之一，Proteintech 凭借一支锐意进取的技术团队和稳定的技术平台，已研发生产出针对人类基因组靶标的 13000 多种抗体，200 余种准确定量的双抗夹心法 ELISA 试剂盒，并在原有重组蛋白产品基础上新增 Humankine® 系列 60 余种人源 HEK293 细胞表达的高活性蛋白。

从成立至今，Proteintech 秉承严谨的态度，力争精益求精，为生命科学研究提供正确有效的工具，成为科研工作者信赖并且喜爱的抗体品牌。截止至 2019 年 9 月，Proteintech 产品的 SCI 文献引用已经超过 5 万次。

《聚焦：Proteintech 臻选抗体》是文献引用多、市场口碑好、客户认可度高的最常用靶标抗体集锦。本册精选上百种优质抗体，涵盖了线粒体、细胞凋亡自噬、肿瘤、干细胞、神经生物学、免疫学、心血管、内分泌与代谢研究领域等常用靶标，方便科研工作者快捷选择所需抗体。

如果您需要了解本册中抗体更详细的信息或是更多抗体产品，请登录 Proteintech 中文官网 www.ptgcn.com 进行查询。



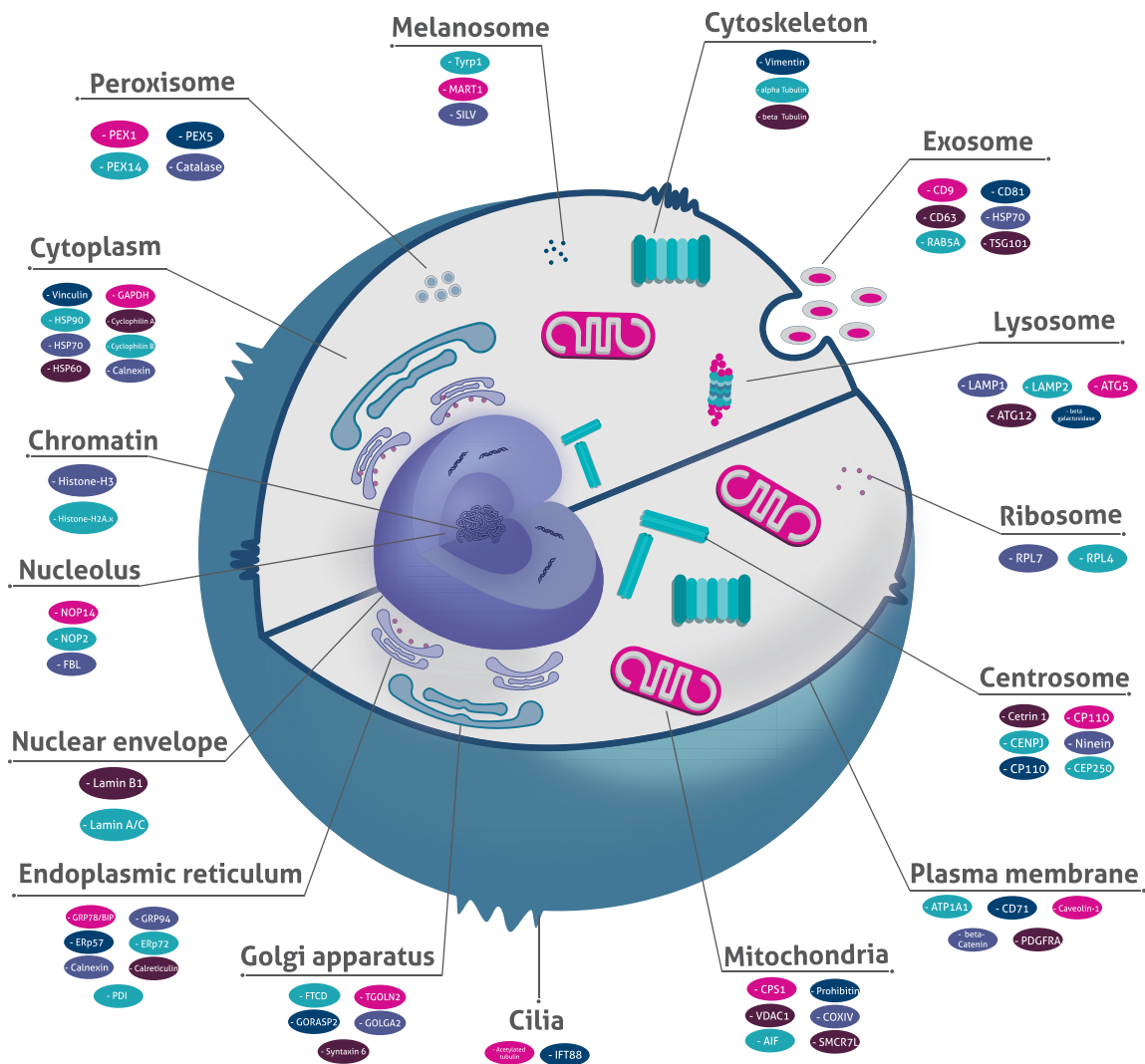
CONTENTS 目录

细胞器和亚细胞标记物 Organelle and Subcellular Markers	04
线粒体 Mitochondria	06
纤毛 Cilia	08
内质网应激 Endoplasmic Reticulum Stress	10
细胞凋亡 Apoptosis	12
细胞自噬 Autophagy	14
细胞周期 Cell Cycle	16
干细胞 Stem Cell	18
肿瘤 Cancer	20
表观遗传学 Epigenetics	22
免疫学 Immunology	24
神经生物学 Neuroscience	26
心血管 Cardiovascular System	28
内分泌与代谢 Endocrinology & Metabolism	30
内参及标签抗体 Loading Control and Tag Antibodies	32
CNS 文献引用抗体 Antibodies Cited in CNS	34

细胞器和亚细胞器标记物 Organelle and Subcellular Markers

细胞器是具有特定形态和功能的膜性结构，是真核细胞执行生命活动的功能区域。每种细胞器都有其特化的功能，但同时它们之间发生相互作用，通过相互协调来完成一系列重要生理功能。

利用细胞器和亚细胞器标记物相关抗体可以清楚的观察细胞器的形态结构，了解相关蛋白定位及功能，除此以外，在细胞器分离提取物的 Western blot 的研究中也可以用作阳性对照。



▲ 细胞器和亚细胞器标记物

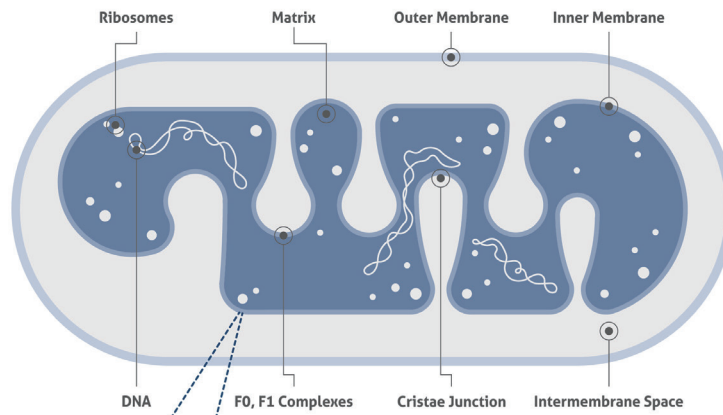
细胞器和亚细胞器标记物相关抗体

领域	抗体名称	货号	抗体类型	应用	适用物种	文献
细胞骨架	Cytokeratin 7	66483-1-Ig	Mouse MAb	IHC, WB, ELISA	human	-
	★ Vimentin	60330-1-Ig	Mouse MAb	FC, IF, IHC, WB, ELISA	human, mouse, rat	8
	★ Vimentin	10366-1-AP	Rabbit PAb	FC, IF, IHC, WB, ELISA	human, mouse, rat	196
细胞核仁	B23/NPM1	60096-1-Ig	Mouse MAb	IF, IHC, WB, ELISA	human, mouse, rat	7
	FBL	16021-1-AP	Rabbit PAb	IF, IP, WB, ELISA	human, mouse, rat	3
细胞膜	E-cadherin	60335-1-Ig	Mouse MAb	IF, IHC, WB, ELISA	human, pig, monkey	7
	E-cadherin	20874-1-AP	Rabbit PAb	FC, IF, IHC, IP, WB, ELISA	human, mouse, rat, cow, pig	212
	N-cadherin	66219-1-Ig	Mouse MAb	IF, IHC, WB, ELISA	human, pig, mouse, rat	8
	N-cadherin	22018-1-AP	Rabbit PAb	FC, IF, IHC, IP, WB, ELISA	human, mouse, rat, cow, gekko japonicus	60
	ZO-1	66452-1-Ig	Mouse MAb	IF, IHC, WB, ELISA	human, dog	3
	ZO-1	21773-1-AP	Rabbit PAb	FC, IF, IP, WB, ELISA	human, dog, mouse, rat, hamster, cow, pig, swine	99
高尔基体	GOLGA2/GM130	11308-1-AP	Rabbit PAb	FC, IF, IHC, WB, ELISA	human, dog, hamster, mouse	12
	GORASP2	66627-1-Ig	Mouse MAb	IF, IHC, WB, ELISA	human, rat, pig	-
	GORASP2	10598-1-AP	Rabbit PAb	IF, IHC, IP, WB, ELISA	human, mouse, rat, monkey	24
	★ Syntaxin 6	60059-1-Ig	Mouse MAb	IHC, WB, ELISA	human, mouse, rat	-
	★ Syntaxin 6	10841-1-AP	Rabbit PAb	IF, IHC, IP, WB, ELISA	human, mouse, rat	6
内质网	ERp57/ERp60	15967-1-AP	Rabbit PAb	FC, IF, IHC, IP, WB, ELISA	human, mouse, rat, pig	17
	ERp72	66365-1-Ig	Mouse MAb	IF, IHC, WB, ELISA	human	-
	GRP94	60012-1-Ig	Mouse MAb	FC, IF, IHC, WB, ELISA	human, mouse, rat	-
	GRP94	14700-1-AP	Rabbit PAb	FC, IF, IHC, IP, WB, ELISA	human, mouse, rat	10
	PDI	66422-1-Ig	Mouse MAb	IF, IHC, WB, ELISA	human, pig, mouse, rat	1
	PDI	11245-1-AP	Rabbit PAb	FC, IF, IHC, IP, WB, ELISA	human, mouse, rat	12
线粒体	AIF	17984-1-AP	Rabbit PAb	IF, IHC, IP, WB, ELISA	human, mouse, rat, sheep	19
	★ COXIV	66110-1-Ig	Mouse MAb	FC, IF, IHC, WB, ELISA	human	-
	Mitofilin	10179-1-AP	Rabbit PAb	FC, IF, IHC, IP, WB, ELISA	human, mouse, hamster, rat	21
	SMCR7L/MID51	20164-1-AP	Rabbit PAb	IF, IP, WB, ELISA	human, mouse, rat	23
纤毛	★ acetylated Tubulin(Lys40)	66200-1-Ig	Mouse MAb	IF, IHC, WB, ELISA	human, mouse, rat, dog, pig, drosophila	10
	ARL13B	66739-1-Ig	Mouse MAb	IF, WB, ELISA	human, dog	-
	ARL13B	17711-1-AP	Rabbit PAb	IF, IHC, IP, WB, ELISA	human, mouse, rat, dog, chicken, pig, sheep, xenopus, zebrafish	221
	ADCY3	19492-1-AP	Rabbit PAb	IHC, IF, IP, WB, ELISA	human, mouse, rat	1
外泌体	★ CD63	25682-1-AP	Rabbit PAb	IF, IHC, WB, ELISA	human	23
	CD9	60232-1-Ig	Mouse MAb	IHC, WB, ELISA	human, rat	1
过氧化物酶体	Catalase	66765-1-Ig	Mouse MAb	WB, IF, ELISA	human, mouse, rat, pig	-
	Catalase	21260-1-AP	Rabbit PAb	IF, IHC, WB, ELISA	human, mouse, rat, bat, goat, Meretrix meretrix, sheep, swine	23
	PEX14	10594-1-AP	Rabbit PAb	FC, IF, IHC, IP, WB, ELISA	human, mouse, rat, monkey	19
	PEX5	12545-1-AP	Rabbit PAb	FC, IF, IHC, IP, WB, ELISA	human, mouse, rat	3
核糖体	ribosomal protein L4	11302-1-AP	Rabbit PAb	IF, IHC, IP, WB, ELISA	human, mouse, rat, arabidopsis, rice	10
溶酶体	LAMP2	66301-1-Ig	Mouse MAb	IF, IHC, WB, ELISA	human, mouse	1
中心体	CENPJ	11517-1-AP	Rabbit PAb	WB, IF, ELISA	human, turtles	10
内体	Caveolin-1	16447-1-AP	Rabbit PAb	IHC, IP, WB, ELISA	human, mouse, rat	15
	RAB11A/B	15903-1-AP	Rabbit PAb	IF, IHC, IP, WB, ELISA	human, mouse, dog	14
细胞小体	BMI1	66161-1-Ig	Mouse MAb	IF, IHC, IP, WB, ELISA	human, mouse, monkey	3
	BMI1	10832-1-AP	Rabbit PAb	IF, IHC, IP, WB, ELISA	human, mouse	9
	PTBP1	12582-1-AP	Rabbit PAb	IF, IHC, WB, ELISA	human, mouse, rat	9

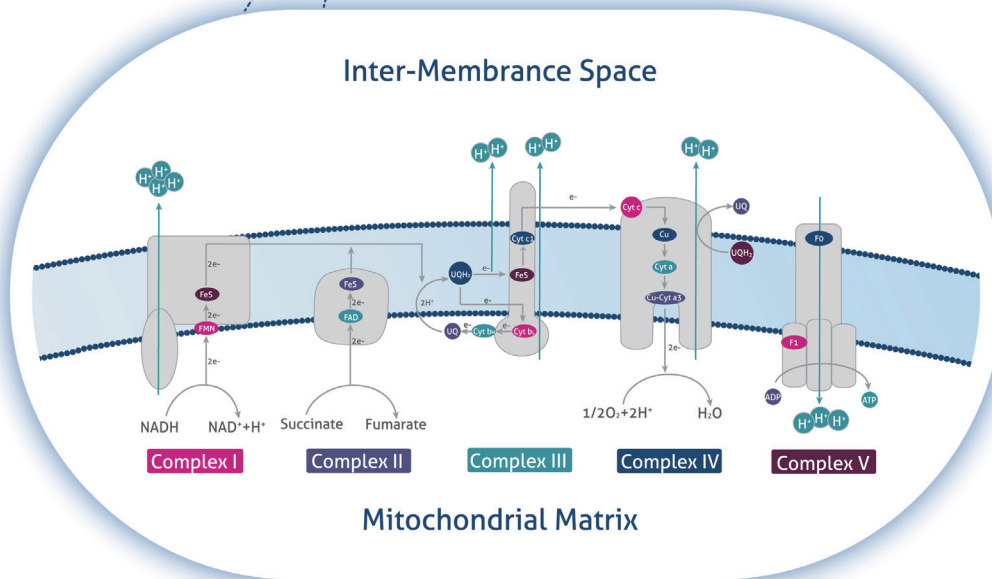
★: Proteintech 明星抗体

线粒体是存在于真核生物中的一种重要的细胞器，它不仅是细胞能量代谢的中心，而且在很多生命活动中发挥信号枢纽的作用，包括细胞凋亡和自噬、钙离子稳态调节、活性氧信号转导等。

线粒体功能缺陷和信号紊乱与很多重大疾病密切相关，包括癌症、神经退行性疾病、代谢紊乱、心肌病等。正是由于线粒体的重要作用及其与多类常见疾病相关，近年来线粒体已成为国内外科学家的研究热点。



▲ 线粒体结构模式图



▲ 线粒体呼吸链复合物 (Mitochondrial Respiratory Complexes)

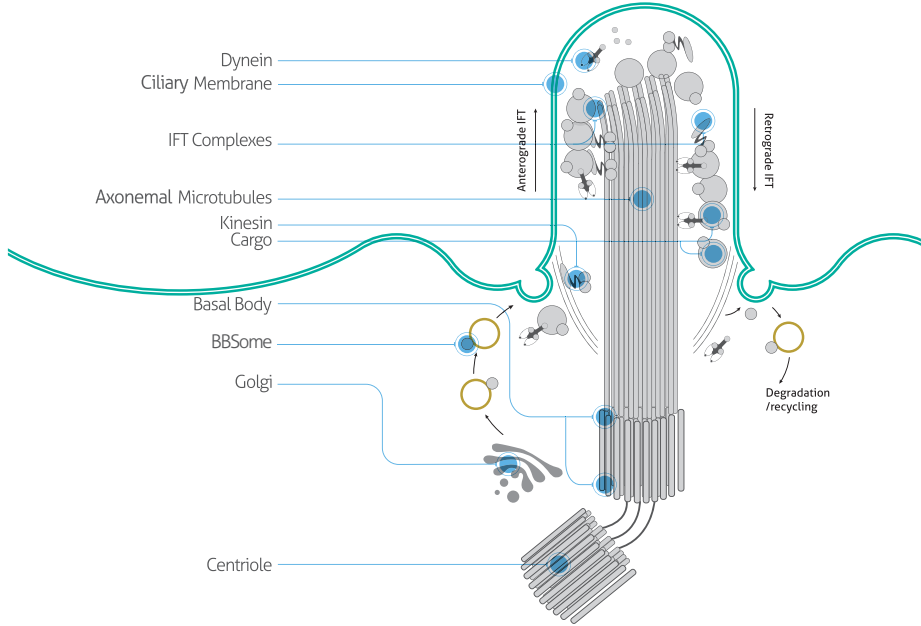
线粒体研究相关抗体

抗体名称	货号	抗体类型	应用	适用物种	文献
AIF	17984-1-AP	Rabbit PAb	IF, IHC, IP, WB, ELISA	human, mouse, rat, sheep	20
★ ATP5A1	14676-1-AP	Rabbit PAb	IF, IHC, WB, ELISA	human, mouse, rat	23
★ ATP5A1	66037-1-lg	Mouse MAb	FC, IF, IHC, IP, WB, ELISA	human, mouse, rat, monkey	6
ATPB	17247-1-AP	Rabbit PAb	IF, IHC, IP, WB, ELISA	human, mouse, rat	10
COX5A	11448-1-AP	Rabbit PAb	IF, IHC, WB, ELISA	human, mouse, rat, chimpanzees, gorillas	6
COX5B	11418-2-AP	Rabbit PAb	IF, IHC, WB, ELISA	human, mouse, rat	7
★ COXIV	11242-1-AP	Rabbit PAb	WB, IP, IHC, IF, FC, ELISA	human, mouse, rat, swine	77
★ COXIV	66110-1-lg	Mouse MAb	WB, IHC, IF, FC, ELISA	human	-
CPT1A	15184-1-AP	Rabbit PAb	FC, IF, IHC, IP, WB, ELISA	human, mouse, rat	68
CYC1	10242-1-AP	Rabbit PAb	IHC, WB, ELISA	human, mouse, monkey, pig	15
CYTB	55090-1-AP	Rabbit PAb	IHC, WB, ELISA	human, mouse, rat	16
Cytochrome c	66264-1-lg	Mouse MAb	IF, IHC, WB, ELISA	human, mouse, rat	5
ECHS1	11305-1-AP	Rabbit PAb	IF, IHC, IP, WB, ELISA	human, mouse, rat	14
ECHS1	66117-1-lg	Mouse MAb	IF, IHC, IP, WB, ELISA	human	2
★ FIS1	10956-1-AP	Rabbit PAb	IF, IHC, IP, WB, ELISA	human, mouse, rat, pig, squirrels	54
★ FIS1	66635-1-lg	Mouse MAb	IF, IHC, WB, ELISA	human	-
GRP75	14887-1-AP	Rabbit PAb	FC, IF, IHC, IP, WB, ELISA	human, mouse, rat	7
HADHA	10758-1-AP	Rabbit PAb	FC, IF, IHC, IP, WB, ELISA	human, mouse, rat	10
HADHA	60250-1-lg	Mouse MAb	IF, IHC, WB, ELISA	human, mouse	2
★ MFF	17090-1-AP	Rabbit PAb	IF, IHC, IP, WB, ELISA	human, mouse, rat, monkey, squirrels	48
★ MFF	66527-1-lg	Mouse MAb	WB, IHC	human, pig, rat, mouse	-
MFN1	13798-1-AP	Rabbit PAb	IHC, WB, ELISA	human, mouse, rat, chicken	18
MFN1	66776-1-lg	Mouse MAb	IHC, WB, ELISA	human	-
MFN2	12186-1-AP	Rabbit PAb	IHC, IP, WB, ELISA	human, mouse, rat	31
★ Mitofilin	10179-1-AP	Rabbit PAb	FC, IF, IHC, IP, WB, ELISA	human, mouse, hamster, rat	21
MRPL12	14795-1-AP	Rabbit PAb	FC, IF, IHC, IP, WB, ELISA	human, mouse, rat	8
MRPL44	16394-1-AP	Rabbit PAb	IHC, WB, ELISA	human, mouse, rat	17
MRPS18B	16139-1-AP	Rabbit PAb	IF, IHC, IP, WB, ELISA	human, mouse, rat	32
MRPS22	10984-1-AP	Rabbit PAb	IHC, IP, WB, ELISA	human, mouse, rat	14
MRPS27	17280-1-AP	Rabbit PAb	IF, IHC, IP, WB, ELISA	human, mouse, rat	17
MRPS35	16457-1-AP	Rabbit PAb	IF, IHC, IP, WB, ELISA	human, mouse, rat	11
★ MTCO2	55070-1-AP	Rabbit PAb	FC, IF, IHC, IP, WB, ELISA	human, mouse, rat, zebrafish	21
ND1	19703-1-AP	Rabbit PAb	IF, IHC, IP, WB, ELISA	human, mouse, pig, rat	12
NDUFS1	12444-1-AP	Rabbit PAb	IF, IHC, IP, WB, ELISA	human, mouse, rat	15
NDUFS3	15066-1-AP	Rabbit PAb	IF, IHC, IP, WB, ELISA	human, mouse, rat, pig	15
NDUFV1	11238-1-AP	Rabbit PAb	IHC, IP, WB, ELISA	human, mouse, rat	12
NDUFV2	15301-1-AP	Rabbit PAb	IF, IHC, IP, WB, ELISA	human, mouse, rat	12
OXCT1	12175-1-AP	Rabbit PAb	IF, IHC, IP, WB, ELISA	human, mouse, rat	12
SDHA	14865-1-AP	Rabbit PAb	IF, IHC, IP, WB, ELISA	human, mouse, rat, pig	17
SDHA	66588-1-lg	Mouse MAb	IF, IHC, WB, ELISA	human, mouse, rat	-
SMCR7L/MID51	20164-1-AP	Rabbit PAb	IF, IP, WB, ELISA	human, mouse, rat	24
TIM22	14927-1-AP	Rabbit PAb	IF, IHC, IP, WB, ELISA	human, mouse, rat	6
TIM23	11123-1-AP	Rabbit PAb	IF, IHC, IP, WB, ELISA	human, mouse, rat	18
★ TOM20	11802-1-AP	Rabbit PAb	FC, IF, IHC, IP, WB, ELISA	human, mouse, rat, zebrafish	53
TOM70	14528-1-AP	Rabbit PAb	FC, IF, IHC, IP, WB, ELISA	human, mouse, rat	18
TOMM40	18409-1-AP	Rabbit PAb	FC, IF, IHC, IP, WB, ELISA	human, mouse, rat	8
UQCRCF51	18443-1-AP	Rabbit PAb	IHC, IP, WB, ELISA	human, mouse, rat	7

★: Proteintech 明星抗体

纤毛 (cilia) 分布于哺乳动物体内的大多数细胞，它是一种广泛存在于各种细胞表面的细胞器，体形微小但结构复杂作用强大具有重要的感官作用，能感知细胞外机械和化学信号变化并协助其转导至细胞内部从而引起细胞应答。

近年来研究发现，很多人类疾病都与纤毛结构、长度的失调相关，而 Hedgehog 等多种发育信号通路的运行和调控依赖于初级纤毛，决定了它在人类许多组织和器官的发育成形及生理活动中扮演重要角色。



▲ 纤毛结构图

ARL13B Antibody

货号: 17711-1-AP

KD/KO validated

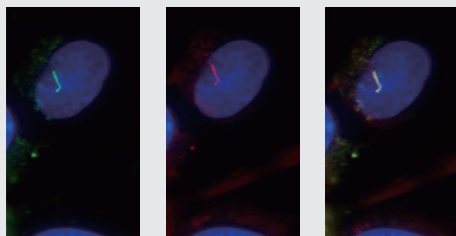
264 Publications

检测应用:

WB, IP, IHC, IF, ELISA

适用物种:

human, mouse, rat, dog, chicken, pig, sheep, Xenopus, Zebrafish



ARL13B
(17711-1-AP)

Acetylated tubulin
(66200-1-Ig)

MERGE

Cells: MDCK

Acetylated Tubulin(Lys40) Antibody

货号: 66200-1-Ig

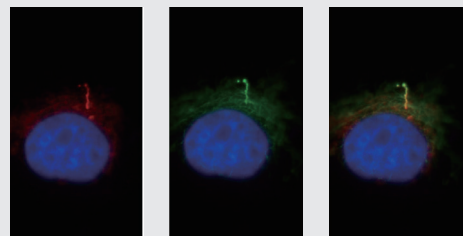
20 Publications

检测应用:

WB, IHC, IF, ELISA

适用物种:

human, mouse, rat, dog, pig, bovine, Drosophila



IFT88
(13967-1-AP)

Acetylated tubulin
(66200-1-Ig)

MERGE

Cells: MDCK

纤毛研究相关抗体

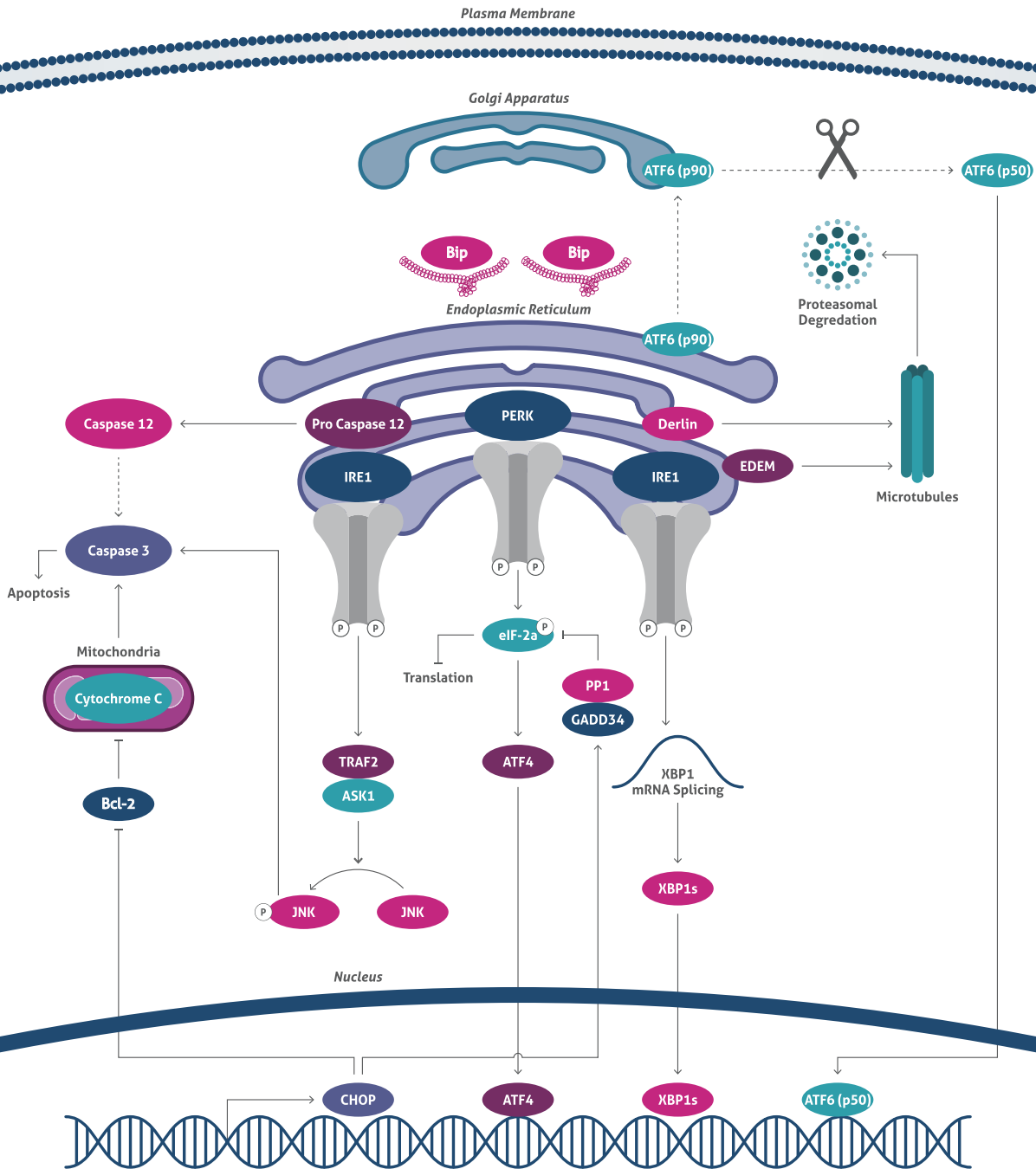
抗体名称	货号	抗体类型	应用	适用物种	文献
★ acetylated Tubulin(Lys40)	66200-1-Ig	Mouse MAb	WB, IHC, IF, ELISA	human, mouse, rat, dog, pig, drosophila	20
ARF4	11673-1-AP	Rabbit PAb	WB, IP, IHC, IF, FC, ELISA	human, mouse, rat	24
★ ARL13B	17711-1-AP	Rabbit PAb	WB, IP, IHC, IF, ELISA	human, mouse, rat, dog, chicken, pig, sheep, xenopus, zebrafish	264
★ ARL13B	66739-1-Ig	Mouse MAb	WB, IF, ELISA	human, dog	-
ARL3	10961-1-AP	Rabbit PAb	WB, IP, IHC, IF, ELISA	human, mouse, rat	9
BBS10	12421-2-AP	Rabbit PAb	WB, IF, ELISA	human, zebrafish, mouse	3
BBS10	66679-1-Ig	Mouse MAb	WB, IHC, ELISA	human	-
BBS13	16206-1-AP	Rabbit PAb	WB, IP, IHC, IF, ELISA	human, mouse, rat	19
BBS13	66518-1-Ig	Mouse MAb	WB, IHC, ELISA	human, pig, rat	-
★ BBS2	11188-2-AP	Rabbit PAb	WB, IP, IHC, IF, ELISA	human, mouse, rat	9
★ BBS2	66246-1-Ig	Mouse MAb	WB, IF, ELISA	human, dog	1
BBS5	14569-1-AP	Rabbit PAb	WB, IP, IHC, IF, ELISA	human, mouse, rat	16
BBS5	66136-1-Ig	Mouse MAb	WB, IHC, ELISA	human, mouse	-
Centrin 1	12794-1-AP	Rabbit PAb	WB, IF, ELISA	human, mouse, zebrafish	9
CEP164	22227-1-AP	Rabbit PAb	WB, IP, IHC, IF, ELISA	human, dog, mouse	8
CEP63	16268-1-AP	Rabbit PAb	WB, IP, IHC, IF, ELISA	human, mouse, rat, dog	7
★ CP110	12780-1-AP	Rabbit PAb	WB, IP, IHC, IF, FC, ELISA	human, mouse, rat, dog, xenopus	54
FBF1	11531-1-AP	Rabbit PAb	WB, IP, IHC, IF, ELISA	human, mouse	9
gamma Tubulin	15176-1-AP	Rabbit PAb	WB, IP, IHC, IF, ELISA	human, mouse, rat, dog	4
gamma Tubulin	66320-1-Ig	Mouse MAb	WB, IHC, IF, ELISA	human, dog, mouse, rat	-
GSK3B	22104-1-AP	Rabbit PAb	WB, IP, IHC, IF, ELISA	human, mouse, rat, hamster, pig	62
IFT140	17460-1-AP	Rabbit PAb	WB, IP, IHC, IF, ELISA	human, mouse, rat	24
IFT20	13615-1-AP	Rabbit PAb	WB, IP, IHC, IF, ELISA	human, mouse, rat, dog, zebrafish	29
IFT25	15732-1-AP	Rabbit PAb	WB, IHC, IF, ELISA	human, mouse, rat	8
IFT52	17534-1-AP	Rabbit PAb	WB, IP, IF, ELISA	human, mouse, rat, dog, chicken	10
IFT57	11083-1-AP	Rabbit PAb	WB, IP, IHC, IF, ELISA	human, mouse, rat, dog, chicken	15
IFT81	11744-1-AP	Rabbit PAb	WB, IP, IHC, IF, ELISA	human, mouse, dog, rat	20
★ IFT88	13967-1-AP	Rabbit PAb	WB, IP, IHC, IF, CoIP, ELISA	human, mouse, rat, dog, chicken	166
NDE1	10233-1-AP	Rabbit PAb	WB, IP, IHC, IF, CoIP, ELISA	human, mouse, rat	16
ODF2	12058-1-AP	Rabbit PAb	WB, IP, IHC, IF, ELISA	human, mouse, rat	13
PLK4	12952-1-AP	Rabbit PAb	WB, IHC, IF, ELISA	human, mouse, rat	7
RAB11A/B	15903-1-AP	Rabbit PAb	WB, IP, IHC, IF, ELISA	human, mouse, dog	14
RAB3IP	12321-1-AP	Rabbit PAb	WB, IP, IF, ELISA	human, mouse, dog, rat	8
RAB8A	55296-1-AP	Rabbit PAb	WB, IP, IHC, IF, ELISA	human, mouse, rat, dog	12
SDCCAG8	13471-1-AP	Rabbit PAb	WB, IP, IHC, IF, ELISA	human, mouse, rat, zebrafish, dog	8
SDCCAG8	66284-1-Ig	Mouse MAb	WB, IHC, ELISA	human	-
SEPT2	11397-1-AP	Rabbit PAb	WB, IP, IHC, IF, FC, ELISA	human, mouse, rat	10
SEPT9	10769-1-AP	Rabbit PAb	WB, IP, IHC, IF, FC, ELISA	human, mouse, rat	11
SHH	20697-1-AP	Rabbit PAb	WB, IP, IHC, IF, FC, ELISA	human, mouse, rat, american minks	14

★: Proteintech 明星抗体

内质网应激 Endoplasmic Reticulum Stress

内质网应激 (Endoplasmic Reticulum Stress, ER stress) 是由于未折叠或错误折叠的蛋白质累积或内环境的 Ca^{2+} 浓度的改变导致了内质网结构和功能的失衡引起的。通常情况下, 这一系列反应 (ER Stress) 能成功恢复内质网的内环境平衡。但是在多细胞动物里, 持久或者强烈内质网应激也会引发程序性细胞死亡。

近年来, 内质网应激 (ER Stress) 和它所诱导的细胞凋亡被认为在慢性疾病、神经退行性疾病、心脑血管缺血梗塞、癌症和糖尿病等疾病的病理生理中发挥重要作用。



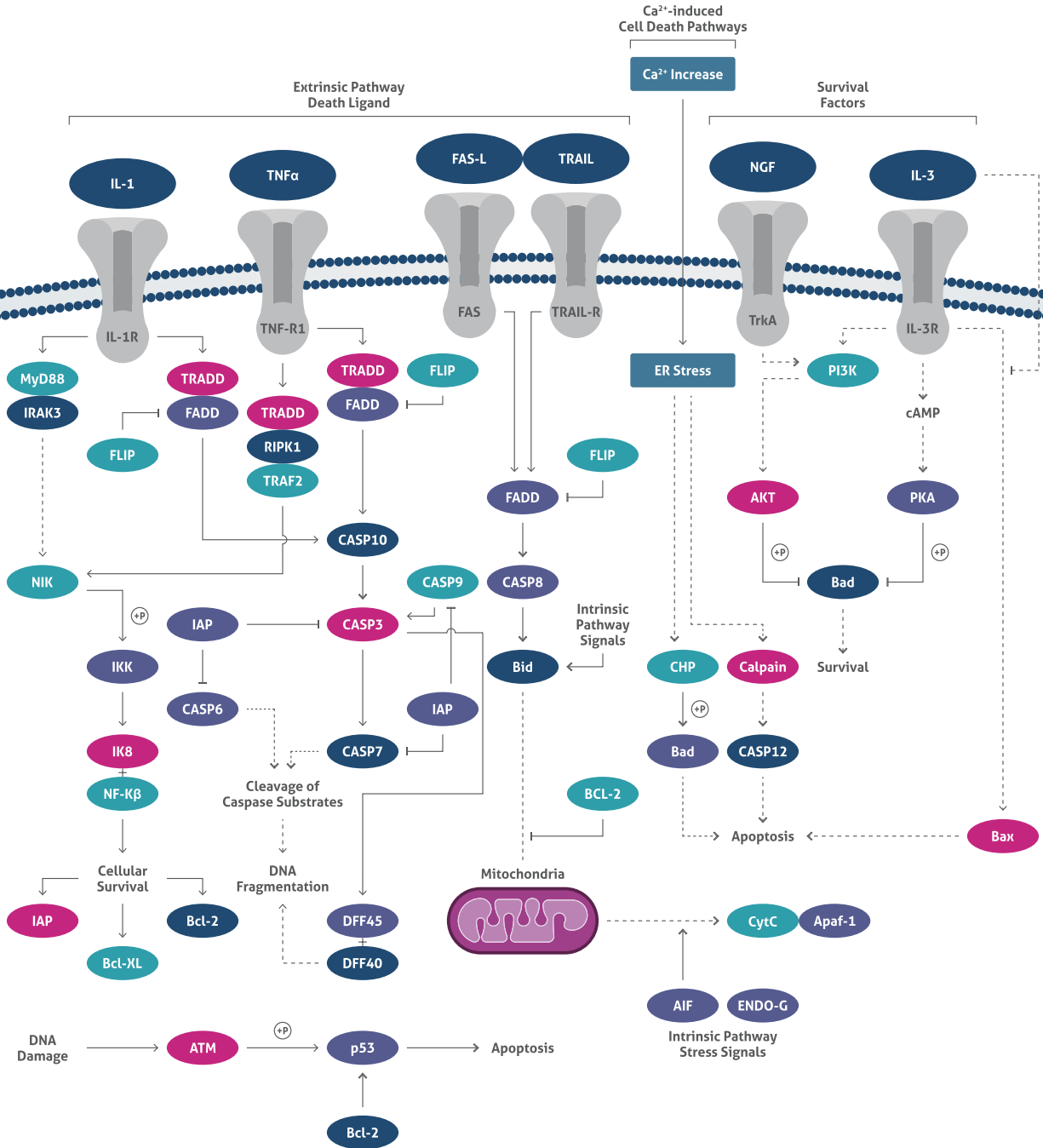
▲ ER Stress 通路图

内质网应激相关抗体

抗体名称	货号	抗体类型	应用	适用物种	文献
ARMET	10869-1-AP	Rabbit PAb	WB, IHC, ELISA	human, mouse, rat	1
★ ATF4	60035-1-Ig	Mouse MAb	WB, IHC, IF, ChIP, ELISA	human, mouse	3
★ ATF6	66563-1-Ig	Mouse MAb	WB, IHC, IF, ELISA	human, mouse, rat	-
★ ATF6	24169-1-AP	Rabbit PAb	WB, IP, IHC, IF, ELISA	human, rat, mouse, swine	39
★ BIP	66574-1-Ig	Mouse MAb	WB, IHC, IF, ELISA	human, rat, mouse	-
★ BIP	11587-1-AP	Rabbit PAb	WB, IP, IHC, IF, FC, ELISA	human, cow, fish, hamster, mouse, porcine, rat, sikadeer, zebrafish	123
★ calreticulin	10292-1-AP	Rabbit PAb	WB, IHC, IF, ELISA	human, mouse, rat	17
★ CHOP	60304-1-Ig	Mouse MAb	WB, IHC, ELISA	human, mouse, rat	4
★ CHOP	15204-1-AP	Rabbit PAb	WB, IHC, IF, FC, ELISA	human, mouse, rat, hamster, swine	81
CREB3	11275-1-AP	Rabbit PAb	WB, IP, IHC, IF, chIP, ELISA	human	2
CREB3L1	11235-2-AP	Rabbit PAb	WB, IHC, IF, ELISA	human, mouse, rat	6
CREB3L2	14514-1-AP	Rabbit PAb	WB, IF, ELISA	human, mouse, rat	2
EIF2S1/EIF2A	11170-1-AP	Rabbit PAb	WB, IP, IHC, IF, FC, ELISA	human, mouse, rat	2
ERO1L	12007-1-AP	Rabbit PAb	WB, IP, IHC, FC, ELISA	human, mouse, rat	1
ERO1LB	11261-2-AP	Rabbit PAb	WB, IHC, IF, ELISA	human, mouse, rat	5
Erp19	20181-1-AP	Rabbit PAb	WB, IHC, ELISA	human, mouse, rat	-
ERP29	24344-1-AP	Rabbit PAb	WB, IP, IHC, IF, ELISA	human, mouse, rat	-
★ Erp57/Erp60	66423-1-Ig	Mouse MAb	WB, IHC, IF, ELISA	human, mouse, rat	-
★ Erp57/Erp60	15967-1-AP	Rabbit PAb	WB, IP, IHC, IF, FC, ELISA	human, mouse, pig, rat	17
Erp72	66365-1-Ig	Mouse MAb	WB, IHC, IF, ELISA	human	-
Erp72	14712-1-AP	Rabbit PAb	WB, IP, IHC, IF, ELISA	human, mouse, rat, monkey	8
GADD34	10449-1-AP	Rabbit PAb	WB, IP, IHC, IF, ELISA	human, mouse, rat, hamster, swine	43
GRP75	14887-1-AP	Rabbit PAb	WB, IP, IHC, IF, FC, ELISA	human, mouse, rat	7
GRP94	14700-1-AP	Rabbit PAb	WB, IP, IHC, IF, FC, ELISA	human, mouse, rat	10
GSTK1	14535-1-AP	Rabbit PAb	WB, IP, IHC, ELISA	human, mouse, rat	3
HMOX1	66743-1-Ig	Mouse MAb	WB, IHC, ELISA	human, mouse, rat, pig	1
HMOX1	10701-1-AP	Rabbit PAb	WB, IP, IHC, IF, ELISA	human, mouse, rat	98
HSP70	66183-1-Ig	Mouse MAb	WB, IHC, IF, ELISA	human, yeast, mouse, rat	1
HSP70	10995-1-AP	Rabbit PAb	WB, IP, IHC, IF, FC, ELISA	human, mouse, rat, oysters	16
IRE1	27528-1-AP	Rabbit PAb	WB, IHC, ELISA	human	-
KEAP1	10503-2-AP	Rabbit PAb	WB, IP, IHC, IF, CoIP, ELISA	human, mouse, rat, monkey	129
MCP1	66272-1-Ig	Mouse MAb	WB, IHC, IF, ELISA	mouse, rabbit, rat	12
MCP1	25542-1-AP	Rabbit PAb	WB, IHC, IF, FC, ELISA	human, mouse	3
NRF2	66504-1-Ig	Mouse MAb	WB, ELISA	human, mouse	1
NRF2	16396-1-AP	Rabbit PAb	WB, IP, IHC, IF, FC, ELISA	human, bovine, hamsters, mouse, ostrichchick, pig, rat	123
PDI	66422-1-Ig	Mouse MAb	WB, IHC, IF, ELISA	human, pig, mouse, rat	1
PDI	11245-1-AP	Rabbit PAb	WB, IP, IHC, IF, FC, ELISA	human, mouse, rat	12
★ PERK	20582-1-AP	Rabbit PAb	WB, IHC, IF, ELISA	human, mouse, rat	16
PPP1CB-Specific	10140-2-AP	Rabbit PAb	WB, IP, IHC, IF, ELISA	human, mouse, rat	3
PPP1CC	11082-1-AP	Rabbit PAb	WB, IP, IHC, IF, ELISA	human, mouse, rat	2
TAP1	11114-1-AP	Rabbit PAb	WB, IP, IHC, IF, ELISA	human, mouse, rat	8
TRAF2	26846-1-AP	Rabbit PAb	WB, IHC, IF, ELISA	human, mouse	1
WFS1	26995-1-AP	Rabbit PAb	WB, IHC, IF, ELISA	human, mouse	-
XBP1	25997-1-AP	Rabbit PAb	WB, IHC, IF, ELISA	human, mouse, rat	11

★: Proteintech 明星抗体

凋亡是细胞的一种“自杀”现象，为了维持内环境稳定，由基因控制的细胞自主有序死亡。该课题获得了 2002 年诺贝尔生理学或医学奖。凋亡与坏死不同，凋亡不是被动的过程，而是主动过程涉及一系列基因的激活、表达以及调控等，如 caspase 家族和 BCL-2 家族等。



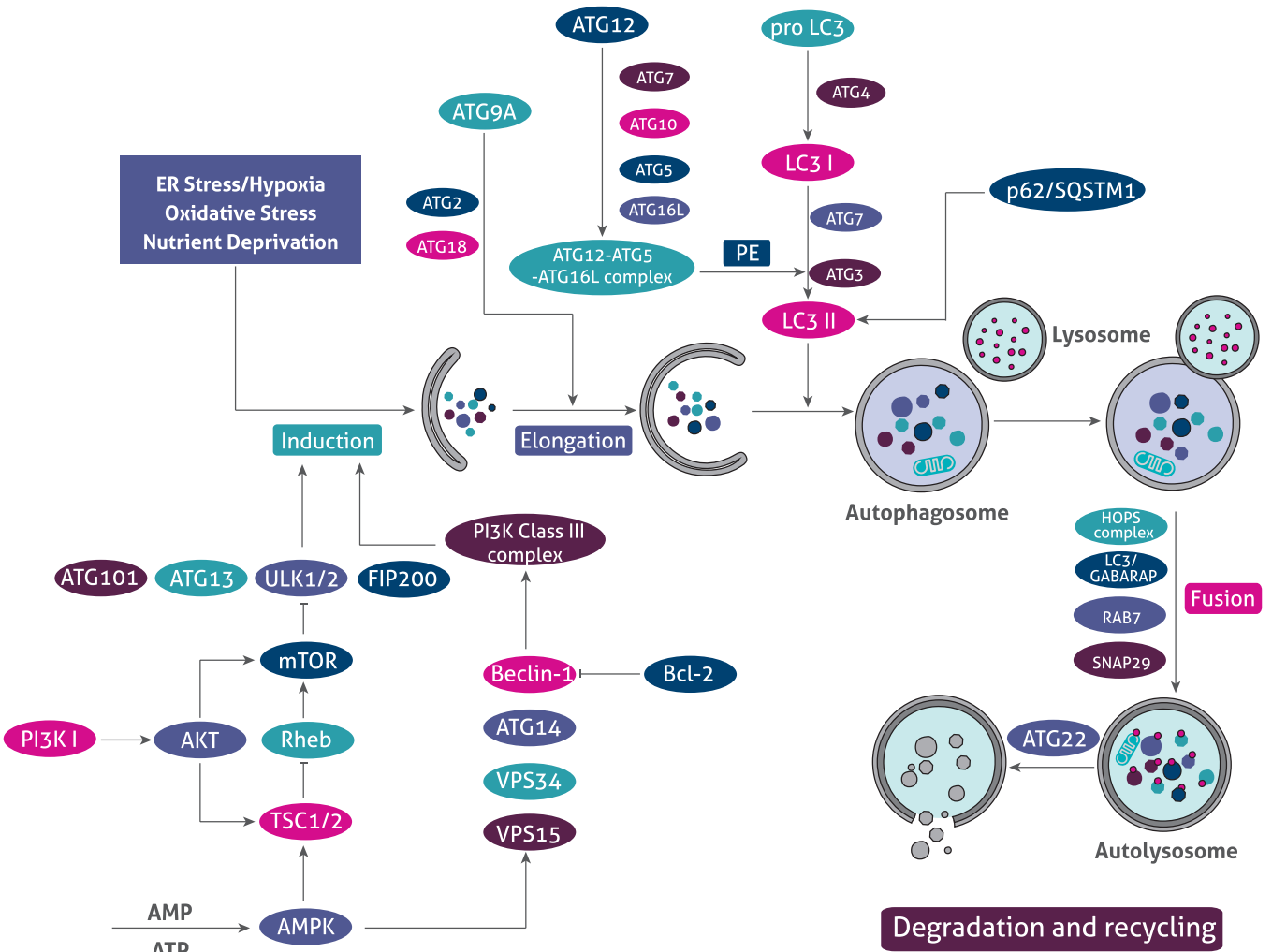
▲ 细胞凋亡信号通路

细胞凋亡相关抗体

抗体名称	货号	抗体类型	应用	适用物种	文献
APAF1	21710-1-AP	Rabbit PAb	WB, IP, IHC, IF, ELISA	human, rat, mouse	17
BAD	10435-1-AP	Rabbit PAb	WB, IHC, ELISA	human, rat, sheep	25
★ BAX	50599-2-Ig	Rabbit PAb	WB, IP, IHC, FC, ChIP, ELISA	human, mouse, rat, astragalusmembranaceus, bovine, cow, guineapig, hamsters, pig, rabbit	571
★ BAX	60267-1-Ig	Mouse MAb	WB, IHC, IF, ELISA	human, mouse, rat	26
BCL2	12789-1-AP	Rabbit PAb	WB, IP, IHC, IF, FC, ChIP, ELISA	human, astragalusmembranaceus, bovine, chicken, cow, guineapig, N.guentheri, pig, rabbit, sheep	568
BCL2	60178-1-Ig	Mouse MAb	WB, IP, IHC, IF, FC, CoIP, ELISA	human, pig, swine	20
BCL2L1	10783-1-AP	Rabbit PAb	WB, IP, IHC, IF, FC, ELISA	human, mouse, rat, sheep	70
BCL2L1	10783-1-AP	Rabbit PAb	WB, IP, IHC, IF, FC, ELISA	human, mouse, rat, sheep	70
BCL2L10	18114-1-AP	Rabbit PAb	WB, IHC, ELISA	human	-
Bcl-XL	66020-1-Ig	Mouse MAb	WB, IHC, IF, FC, ELISA	human	6
Bcl-XL/S	26967-1-AP	Rabbit PAb	WB, IP, IHC, IF, CoIP, ELISA	human, mouse, rat	19
Bcl-XL/S	26967-1-AP	Rabbit PAb	WB, IP, IHC, IF, CoIP, ELISA	human, mouse, rat	19
★ BID	10988-1-AP	Rabbit PAb	WB, IP, ELISA	human, mouse, rat	23
★ BID	60301-1-Ig	Mouse MAb	WB, IHC, IF, ELISA	human	-
Caspase 1	22915-1-AP	Rabbit PAb	WB, IHC, IF, ELISA	human, mouse, rat, cow	42
Caspase 2	10436-1-AP	Rabbit PAb	WB, IP, IHC, ELISA	human, mouse, rat	1
Caspase 2	24777-1-AP	Rabbit PAb	WB, IHC, IF, ELISA	human, mouse	-
Caspase 2	66517-1-Ig	Mouse MAb	WB, ELISA	human	-
★ Caspase 3	19677-1-AP	Rabbit PAb	WB, IP, IHC, IF, ELISA	human, mouse, rat, astragalusmembranaceus, hamster, hamsters, monkey, pig, sheep, zebrafish	419
★ Caspase 3	66470-2-Ig	Mouse MAb	WB, IHC, IF, ELISA	human, mouse, rat	9
Caspase 4	11856-1-AP	Rabbit PAb	WB, IHC, IF, ELISA	human	2
Caspase 6	10198-1-AP	Rabbit PAb	WB, IHC, ELISA	human, mouse, rat	4
Caspase 7	27155-1-AP	Rabbit PAb	WB, IP, IF, ELISA	human, mouse	6
★ Caspase 8	13423-1-AP	Rabbit PAb	WB, IP, IHC, IF, ELISA	human, mouse, chicken, rat	95
★ Caspase 8	66093-1-Ig	Mouse MAb	WB, IP, IHC, IF, ELISA	human, chicken, monkey, mouse, rat, sheep	23
★ Caspase 9	10380-1-AP	Rabbit PAb	WB, IP, IHC, IF, FC, ELISA	human, mouse, rat, astragalusmembranaceus, hamster, hamsters, sheep	212
★ Caspase 9	66169-1-Ig	Mouse MAb	WB, IP, IHC, IF, ELISA	human, mouse, rat	11
Caspase 10	14311-1-AP	Rabbit PAb	WB, IP, IHC, IF, ELISA	human	-
caspase 12	55238-1-AP	Rabbit PAb	WB, IP, IHC, IF, ELISA	human, hamster, hamsters	41
clAP1	10022-1-AP	Rabbit PAb	WB, IHC, IF, ELISA	human, mouse, zebrafish	10
clAP1	66626-1-Ig	Mouse MAb	WB, IHC, IF, ELISA	human, mouse, rat, pig	-
clAP2	24304-1-AP	Rabbit PAb	WB, IP, IHC, ELISA	human	4
MCL1	16225-1-AP	Rabbit PAb	WB, IP, IHC, IF, ELISA	human, mouse, rat	40
MCL1	66026-1-Ig	Mouse MAb	WB, IHC, IF, ELISA	human	6
MCL1L-specific	15825-1-AP	Rabbit PAb	IHC, ELISA	human, mouse, rat	-
★ Parp1	13371-1-AP	Rabbit PAb	WB, IP, IHC, IF, ELISA	human, mouse, rat, M.grisea, monkey, pig, sheep	133
★ Parp1	66520-1-AP	Mouse MAb	WB, IP, IHC, IF, ELISA	human, mouse, rat, zebrafish	3
PUMA	55120-1-AP	Rabbit PAb	WB, IP, IHC, ELISA	human, mouse, rat	21
survivin	10508-1-AP	Rabbit PAb	WB, IP, ELISA	human, mouse, hamster	43
survivin	19119-1-AP	Rabbit PAb	IHC, IF, ELISA	human, mouse, rat	-
survivin	66495-1-Ig	Mouse MAb	WB, IF, ELISA	human	1
XIAP	10037-1-Ig	Rabbit PAb	WB, IHC, IF, ELISA	human, rat	21
XIAP	23453-1-AP	Rabbit PAb	WB, IHC, IF, ELISA	human, rat	-

★: Proteintech 明星抗体

细胞自噬是细胞内的一种“自食”现象，是真核生物中进化保守的对细胞内物质进行周转的重要过程。在哺乳动物的自噬泡形成中，由 ATG3、ATG5、ATG7、ATG10、ATG12 和 LC3 参与组成的两条泛素样蛋白加工修饰过程：ATG12 结合过程和 LC3 修饰过程起着至关重要的作用。大量研究证明，自噬可以影响细胞周期、细胞凋亡、衰老等多种生理过程，并与各系统疾病的发生有关。细胞自噬是继细胞凋亡后的又一热门研究方向，这一课题也获得了 2016 年的诺贝尔生理学或医学奖。



▲ 细胞自噬信号通路

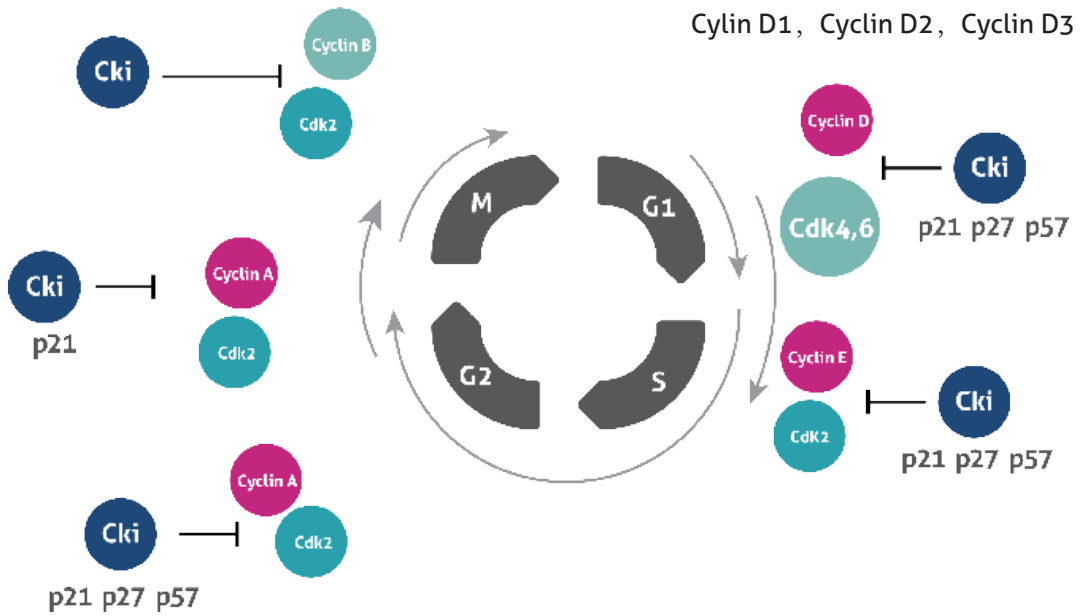
细胞自噬相关抗体

抗体名称	货号	抗体类型	应用	适用物种	文献
ABL2	17693-1-AP	Rabbit PAb	WB, IP, IHC, IF, ELISA	human, mouse	2
AEG-1	13860-1-AP	Rabbit PAb	WB, IP, IHC, IF, ELISA	human, mouse, rat	32
AMBRA1	13762-1-AP	Rabbit PAb	WB, IHC, IF, ELISA	human, mouse, rat	1
ATG12	11264-1-AP	Rabbit PAb	WB, IF, ELISA	human, mouse, rat	2
ATG13	18258-1-AP	Rabbit PAb	WB, IP, IHC, ELISA	human, mouse, rat	1
ATG13	66708-1-Ig	Mouse MAb	WB, IHC, IF, ELISA	human, mouse, rat, pig	-
ATG14(C-terminal)	24412-1-AP	Rabbit PAb	WB, IHC, IF, ELISA	human, mouse	1
ATG16L1	19812-1-AP	Rabbit PAb	WB, IP, ELISA	human, mouse	1
ATG3	11262-2-AP	Rabbit PAb	WB, IHC, IF, ELISA	human, mouse, rat	4
ATG4B	15131-1-AP	Rabbit PAb	WB, IP, IHC, IF, ELISA	human, mouse, rat	4
ATG4C	20382-1-AP	Rabbit PAb	WB, IHC, IF, ELISA	human, mouse	-
★ ATG5	10181-2-AP	Rabbit PAb	WB, IHC, IF, FC, ELISA	human, mouse, rat, grouper, monkey	53
★ ATG5	60061-1-Ig	Mouse MAb	WB, IF, ELISA	human, mouse	1
★ Beclin 1	11306-1-AP	Rabbit PAb	WB, IP, IHC, IF, ELISA	human, mouse, rat, common carp, cyprinus carpio, prawns, zebrafish	158
★ Beclin 1	66665-1-Ig	Mouse MAb	WB, IHC, IF, ELISA	human, mouse, rat	1
CISD2	13318-1-AP	Rabbit PAb	WB, IP, IHC, IF, FC, ELISA	human, mouse, rat, drosophila	12
CISD2-Specific	66082-1-Ig	Mouse MAb	WB, IHC, IF, ELISA	human, zebrafish, rat, mouse	-
GABARAPL1	66458-1-Ig	Mouse MAb	WB, ELISA	human, mouse, rat, pig	-
GABARAPL1-Specific	11010-1-AP	Rabbit PAb	WB, IP, IHC, IF, FC, ELISA	human, mouse, rat, monkey, prawns	29
GABARAPL2-Specific	18724-1-AP	Rabbit PAb	WB, IHC, FC, ELISA	human, mouse, rat	6
GOPC	12163-1-AP	Rabbit PAb	WB, IHC, IF, ELISA	human, mouse, rat	-
HDAC6	12834-1-AP	Rabbit PAb	WB, IP, IHC, IF, ELISA	human, mouse, rat	13
HIPK2	55408-1-AP	Rabbit PAb	WB, IHC, ELISA	human, mouse	2
★ LC3	14600-1-AP	Rabbit PAb	WB, IP, IHC, IF, FC, ELISA	human, mouse, rat, monkey	66
LC3A-Specific	18722-1-AP	Rabbit PAb	WB, IHC, IF, FC, ELISA	human, mouse, rat	3
LC3B-Specific	18725-1-AP	Rabbit PAb	WB, IHC, IF, ELISA	human, mouse, rat	70
LC3C-Specific	18726-1-AP	Rabbit PAb	WB, IF, ELISA	human	2
LKB1	10746-1-AP	Rabbit PAb	WB, IP, IHC, CoIP, ELISA	human, mouse, rat	6
NPC1	13926-1-AP	Rabbit PAb	WB, IHC, IF, ELISA	human, mouse	7
OPTN	10837-1-AP	Rabbit PAb	WB, IP, IHC, IF, FC, ELISA	human, mouse, rat	31
OPTN	60293-1-Ig	Mouse MAb	WB, IHC, IF, ELISA	human	-
★ P62/SQSTM1	55274-1-AP	Rabbit PAb	WB, IHC, IF, ELISA	human, mouse, rat	2
★ P62/SQSTM1	66184-1-Ig	Mouse MAb	WB, IHC, IF, FC, ELISA	human, monkey	4
PARK7,DJ-1	11681-1-AP	Rabbit PAb	WB, IP, IHC, IF, ELISA	human, mouse	5
PI3K p110(beta)	20584-1-AP	Rabbit PAb	WB, IP, IHC, IF, co-IP, ELISA	human, bluntnoutbreem, chicken, mouse, rat	48
RAB24	11445-1-AP	Rabbit PAb	WB, IP, IHC, ELISA	human, mouse, dog	1
Raptor	20984-1-AP	Rabbit PAb	WB, IP, IHC, IF, ELISA	human, rat, mouse	8
RB1CC1	17250-1-AP	Rabbit PAb	WB, IP, IHC, IF, co-IP, ELISA	human, mouse, rat, monkey	27
Rubicon	21444-1-AP	Rabbit PAb	WB, IHC, IF, ELISA	human, mouse, rat	3
SPG11	16555-1-AP	Rabbit PAb	WB, IHC, ELISA	human, mouse, rat	5
STK11	66719-1-Ig	Mouse MAb	WB, IHC, IF, ELISA	human, mouse, rat	-
ULK1	20986-1-AP	Rabbit PAb	WB, IHC, ELISA	human, rat	5
UVRAG	19571-1-AP	Rabbit PAb	WB, IP, IF, ELISA	human, mouse, rat	1
VMA21	21921-1-AP	Rabbit PAb	WB, IP, IHC, ELISA	human, mouse, rat	1
VPS15	17894-1-AP	Rabbit PAb	WB, IF, ELISA	human, mouse, rat	2
VPS34	13723-1-AP	Rabbit PAb	WB, IHC, ELISA	human, mouse, rat	-
VPS34 (C terminal)	12452-1-AP	Rabbit PAb	WB, IHC, IF, ELISA	human, mouse, rat	5
WDFY3	55009-1-AP	Rabbit PAb	WB, IHC, IF, ELISA	human, mouse	2
WDR45	19194-1-AP	Rabbit PAb	WB, IHC, IF, ELISA	human, mouse	1
WIPI2	15432-1-AP	Rabbit PAb	WB, IHC, ELISA	human, mouse	-

★ : Proteintech 明星抗体

细胞周期（Cell Cycle）是指一次有丝分裂结束到下一次有丝分裂完成所经历的整个序贯过程。

细胞周期的运转由多种机制控制，以确保细胞分裂的有序进行。细胞周期各项指标的正常运转对细胞的生长、增殖起着重要的调控作用，阻滞细胞周期的正常运转已成为药物作用的新靶点，运用于肿瘤或其他疾病的治疗。



▲ 细胞周期模式图

CDK4 Antibody

货号: 11026-1-AP

KD/KO validated

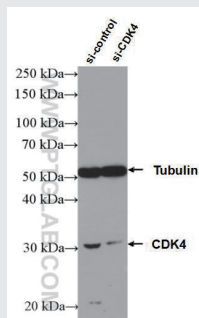
84 Publications

检测应用:

WB, IP, IHC, IF, FC, CoIP, ELISA

适用物种:

human, mouse, rat, zebrafish



Cells: sh-Control and sh-CDK4 transfected HepG2 cells

Cyclin B1 Antibody

货号: 55004-1-AP

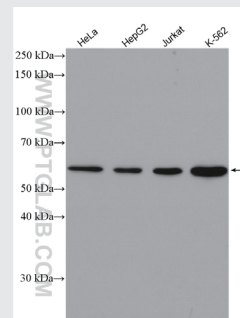
79 Publications

检测应用:

WB, IP, IF, ELISA

适用物种:

human, mouse, rat



Cells: Various lysates

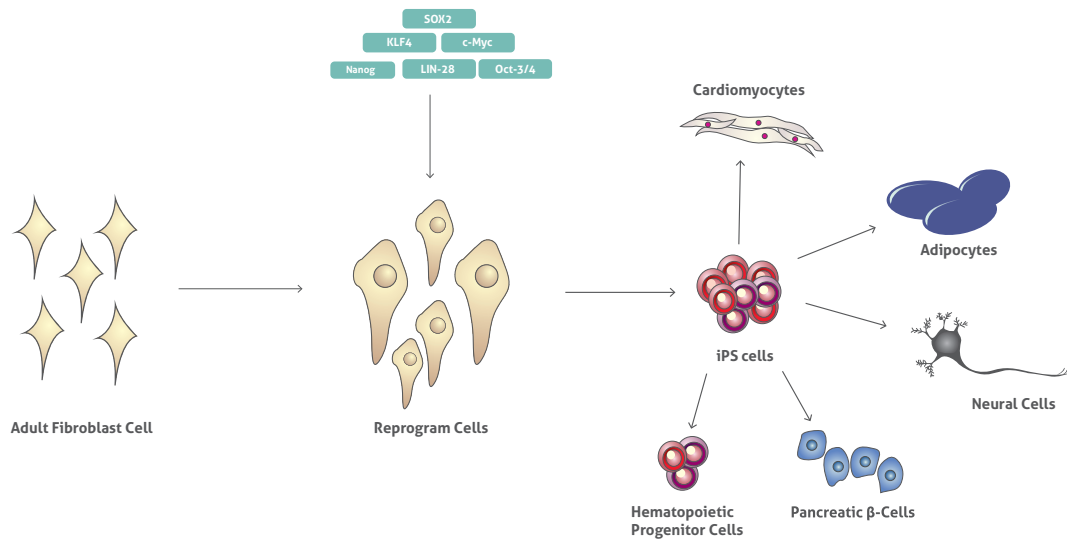
细胞周期相关抗体

抗体名称	货号	抗体类型	应用	适用物种	文献
BMI1	10832-1-AP	Rabbit PAb	WB, IP, IHC, IF, CoIP, ChIP, ELISA	human, mouse	9
BMI1	66161-1-Ig	Mouse MAb	WB, IP, IHC, IF, ELISA	human, mouse, monkey	3
CDC42	10155-1-AP	Rabbit PAb	WB, IHC, IF, CoIP, ELISA	human, mouse, rat	10
CDK1	10762-1-AP	Rabbit PAb	WB, ELISA	human	12
★ CDK2	10122-1-AP	Rabbit PAb	WB, IP, IHC, IF, FC, CoIP, ELISA	human, mouse, rat	54
★ CDK2	60312-1-Ig	Mouse MAb	WB, IHC, FC, ELISA	human	3
CDK3	55103-1-AP	Rabbit PAb	WB, IHC, ELISA	human, mouse	0
★ CDK4	11026-1-AP	Rabbit PAb	WB, IP, IHC, IF, FC, CoIP, ELISA	human, mouse, rat	71
★ CDK4	66950-1-Ig	Mouse MAb	WB, ELISA	human, mouse, rat	-
CDK5	10430-1-AP	Rabbit PAb	WB, IF, ELISA	human, mouse, rat	3
★ CDK6	14052-1-AP	Rabbit PAb	WB, IP, IHC, IF, ELISA	human, mouse, rat	32
★ CDK6	66278-1-Ig	Mouse MAb	WB, IF, ELISA	human, mouse, rat	-
CDK8	22067-1-AP	Rabbit PAb	WB, IHC, IF, ELISA	human, mouse	-
CDK9	11705-1-AP	Rabbit PAb	WB, IHC, ELISA	human, mouse, rat	2
★ Cyclin A2	18202-1-AP	Rabbit PAb	WB, IP, IF, ELISA	human, mouse	32
★ Cyclin A2	66391-1-Ig	Mouse MAb	WB, IHC, IF, ELISA	human	2
★ Cyclin B1	55004-1-AP	Rabbit PAb	WB, IP, IF, ELISA	human, mouse	68
Cyclin B2	21644-1-AP	Rabbit PAb	WB, IP, IHC, IF, ELISA	human, mouse, rat	2
★ Cyclin D1	26939-1-AP	Rabbit PAb	WB, IHC, IF, ELISA	human	1
★ Cyclin D1	60186-1-Ig	Mouse MAb	WB, ELISA	human, mouse	217
Cyclin D2	67048-1-Ig	Mouse MAb	WB, ELISA	human, mouse	-
Cyclin D2	10934-1-AP	Rabbit PAb	WB, ELISA	human, mouse	14
Cyclin D3	26755-1-AP	Rabbit PAb	WB, IP, IHC, IF, ELISA	human, rat	5
Cyclin D3	66357-1-Ig	Mouse MAb	WB, IHC, ELISA	human	-
★ Cyclin E1	11554-1-AP	Rabbit PAb	WB, IHC, FC, ELISA	human, mouse	69
Cyclin E2	11935-1-AP	Rabbit PAb	WB, IP, IHC, IF, FC, ELISA	human	14
Cyclin H	10718-1-AP	Rabbit PAb	WB, IP, IHC, IF, FC, ELISA	human, mouse, rat	-
Cyclin H	67065-1-Ig	Mouse MAb	WB, IHC, ELISA	human, mouse, rat	-
KI67	27309-1-AP	Rabbit PAb	IHC, IF, ELISA	human	71
KRAS	12063-1-AP	Rabbit PAb	WB, IP, IHC, IF, FC, ELISA	human, mouse, rat	40
MDM2	27883-1-AP	Rabbit PAb	WB, ELISA	human	-
MDM2	66511-1-Ig	Mouse MAb	WB, ELISA	human, mouse, rat	-
mTOR	20657-1-AP	Rabbit PAb	WB, IP, IHC, IF, ELISA	human, mouse, rat	62
mTOR	66888-1-Ig	Mouse MAb	WB, IP, IHC, IF, ELISA	human, mouse, rat	1
P16-INK4A	10883-1-AP	Rabbit PAb	WB, IP, IHC, IF, FC, CoIP, ELISA	human	79
P27; KIP1	25614-1-AP	Rabbit PAb	WB, IP, IHC, IF, ELISA	human, mouse	27
P53	10442-1-AP	Rabbit PAb	WB, IP, IF, CoIP, ChIP, ELISA	human, rat, mouse	242
P53	60283-2-Ig	Mouse MAb	WB, IHC, ELISA	human, rat, mouse	1
p57Kip2	23317-1-AP	Rabbit PAb	WB, IHC, ELISA	human	1
p57Kip2	66794-1-Ig	Mouse MAb	WB, ELISA	human, mouse, rat	-
p63	12143-1-AP	Rabbit PAb	WB, IP, IHC, IF, ELISA	human, mouse, rat	5
P63	60332-1-Ig	Mouse MAb	WB, IHC, ELISA	human	-
p70(S6K)	14485-1-AP	Rabbit PAb	WB, IP, IHC, IF, FC, ELISA	human, mouse, rat	36
p70(S6K)	66638-1-Ig	Mouse MAb	WB, IHC, ELISA	human, mouse, rat	-
Pericentrin	22271-1-AP	Rabbit PAb	IF, ELISA	human, dog	1
Prohibitin	10787-1-AP	Rabbit PAb	WB, IP, IHC, IF, ELISA	human, mouse, rat	7
Prohibitin	60092-1-Ig	Mouse MAb	WB, IHC, IF, ELISA	human, rat, pig	-
RAD21	27071-1-AP	Rabbit PAb	WB, IHC, IF, ELISA	human	-
ROCK1	21850-1-AP	Rabbit PAb	WB, IHC, IF, ELISA	human, mouse, rat	23
ROCK1	66782-1-Ig	Mouse MAb	WB, ELISA	human, mouse, rat	-

★: Proteintech 明星抗体

干细胞（Stem Cell）是人体及其各种组织细胞的最初来源，因其具有高度自我复制、增殖和多向分化的潜能，而成为国际生物及医学领域关注的焦点。2012年，英国科学家 John Gurdon 和日本科学家 Shinya Yamanaka 因在细胞核重新编程研究领域做出革命性贡献，而获得诺贝尔生理学或医学奖，自此，干细胞技术也突飞猛进。

干细胞相关抗体能够有效的帮助科学家研究干细胞分化机制，在肿瘤、器官移植，神经、血管、心脏及各种慢性疾病治疗上能够获得有效的进展。



▲ 诱导多能干细胞分化示意图

Lin28 Antibody

货号：11724-1-AP

检测应用：
WB, IP, IHC, IF, ELISA

适用物种：
human, mouse, rat, dog

KD/KO validated

36 Publications





Cells: human embryonic stem cells

KLF4 Antibody

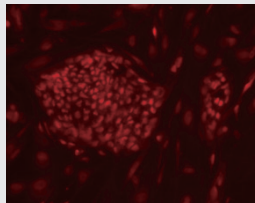
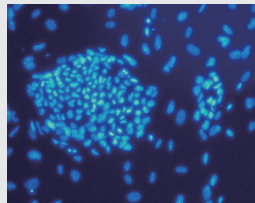
货号：11880-1-AP

检测应用：
WB, IP, IHC, IF, ChIP, ELISA

适用物种：
human, mouse, rat

KD/KO validated

34 Publications

Cells: human embryonic stem cells

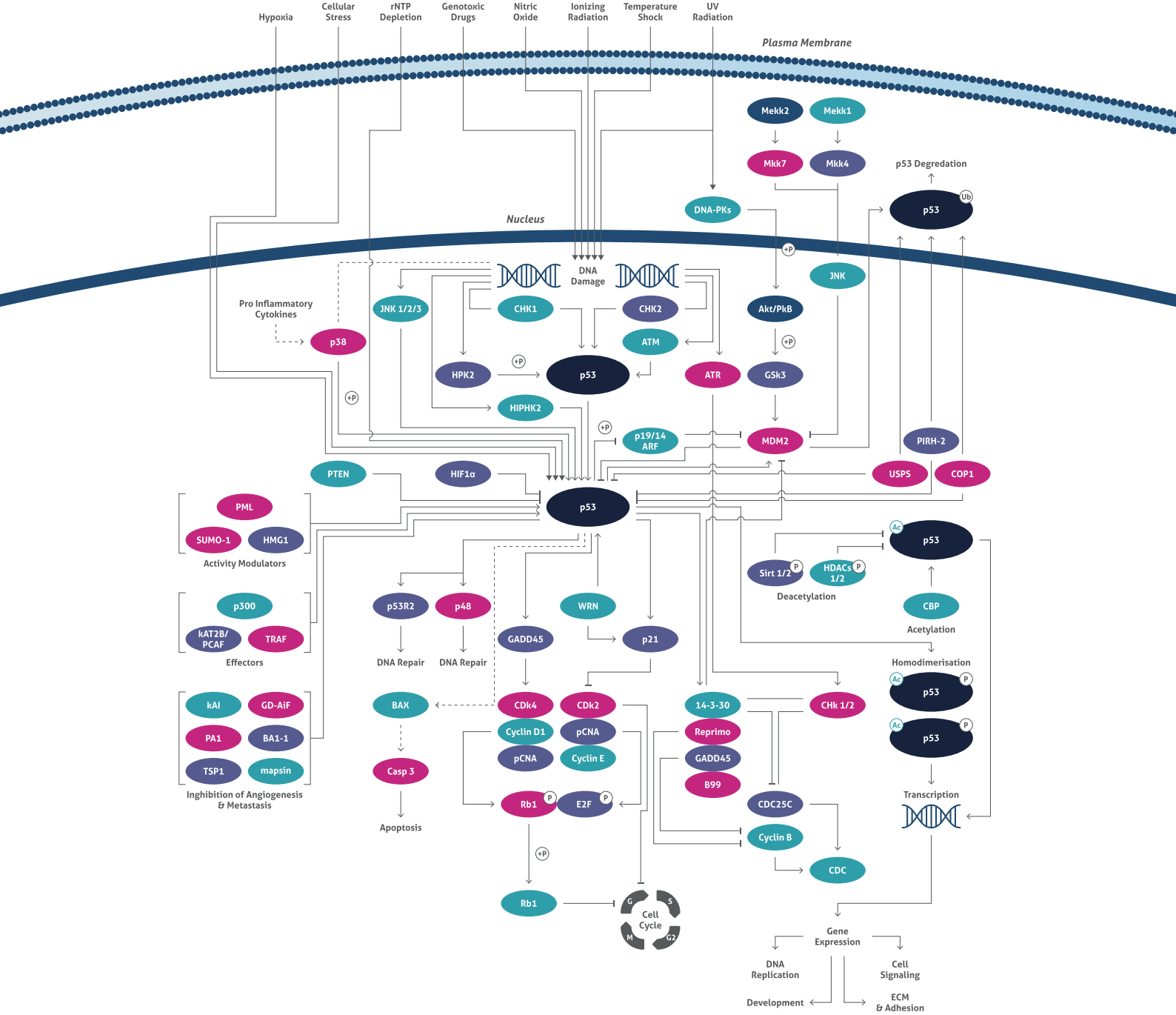
干细胞相关抗体

抗体名称	货号	抗体类型	应用	适用物种	文献
Albumin	66051-1-Ig	Mouse MAb	WB, IP, IHC, IF, ELISA	human, rat, pig	3
ALDH1A1	60171-1-Ig	Mouse MAb	WB, IHC, IF, ELISA	human, mouse, rat, pig	-
Annexin VI	12542-1-AP	Rabbit PAb	WB, IP, IHC, IF, ELISA	human, mouse, rat	4
beta-Catenin	66379-1-Ig	Mouse MAb	WB, IP, IHC, IF, COIP, ELISA	human, mouse, rat, pig	4
BMI1	66161-1-Ig	Mouse MAb	WB, IP, IHC, IF, ELISA	human, mouse, monkey	2
Cardiac Troponin T	15513-1-AP	Rabbit PAb	WB, IHC, IF, ELISA	human, mouse, rat	5
Caveolin-1	66067-1-Ig	Mouse MAb	WB, IHC, ELISA	human, mouse, rat, pig	2
★ CD133	66666-1-Ig	Mouse MAb	WB, IHC, IF, ELISA	human	3
CD151	66567-1-Ig	Mouse MAb	WB, IHC, ELISA	human	-
CD19	66298-1-Ig	Mouse MAb	WB, FC, ELISA	human	-
CD34	60180-1-Ig	Mouse MAb	WB, IHC, IF, ELISA	human	6
★ CD44	60224-1-Ig	Mouse MAb	WB, IHC, IF, FC, ELISA	human, pig	7
CD45	60287-1-Ig	Mouse MAb	WB, IHC, FC, ELISA	human, pig	-
CD47	66304-1-Ig	Mouse MAb	WB, ELISA	human	-
CD71	66180-1-Ig	Mouse MAb	WB, IP, IHC, IF, FC, ELISA	human	-
★ C-MYC	10828-1-AP	Rabbit PAb	WB, IP, IHC, IF, FC, CoIP, ELISA	human, mouse, rat	110
Desmin	60226-1-Ig	Mouse MAb	WB, IHC, IF, ELISA	human, mouse	4
KLF4	11880-1-AP	Rabbit PAb	WB, IP, IHC, IF, ChIP, ELISA	human, mouse, rat	34
★ LIN28	11724-1-AP	Rabbit PAb	WB, IP, IHC, IF, ELISA	human, mouse, rat, dog	36
★ LIN28	60344-1-Ig	Mouse MAb	WB, IHC, ELISA	human	-
★ NANOG	14295-1-AP	Rabbit PAb	WB, IHC, IF, ELISA	human, mouse, rat, marmoset	44
N-cadherin	66219-1-Ig	Mouse MAb	WB, IHC, IF, ELISA	human, pig, mouse, rat	10
NCAM1/CD56	14255-1-AP	Rabbit PAb	WB, IHC, IF, FC, ELISA	human, mouse, rat, pig	13
Nestin	66259-1-Ig	Mouse MAb	WB, FC, ELISA	human, mouse, rat	8
NF-L	60189-1-Ig	Mouse MAb	WB, IHC, IF, ELISA	human, mouse, rat, pig	-
Noggin	14772-1-AP	Rabbit PAb	WB, IHC, ELISA	human, mouse, rat	1
★ OCT4	60242-1-Ig	Mouse MAb	WB, IHC, ELISA	human, mouse	1
P-cadherin	66295-1-Ig	Mouse MAb	WB, IHC, FC, ELISA	human	-
PDGFRA	60045-1-Ig	Mouse MAb	WB, ELISA	human	-
Podocalyxin	18150-1-AP	Rabbit PAb	WB, IHC, FC, ELISA	human, mouse	2
SHH	20697-1-AP	Rabbit PAb	WB, IP, IHC, IF, FC, ELISA	human, mouse, rat, american minks	14
SIRT1	60303-1-Ig	Mouse MAb	WB, IP, IHC, IF, ELISA	human, mouse	1
★ SIX2	11562-1-AP	Rabbit PAb	WB, pull-down, IP, ChIP, ELISA	human, mouse, rat, american alligator, pig	135
SOX2	66411-1-Ig	Mouse MAb	WB, IHC, IF, ELISA	human, pig, mouse	1
TGF-Beta 1	21898-1-AP	Rabbit PAb	WB, IHC, IF, ELISA	human, mouse, rat	64
YAP1	13584-1-AP	Rabbit PAb	WB, IP, IHC, IF, FC, CoIP, ChIP, ELISA	human, mouse, zebrafish, chicken	36

★: Proteintech 明星抗体

恶性肿瘤的治疗长期以来是一个世界性的难题，随着对于肿瘤细胞信号传导途径的研究不断深入，人们对肿瘤细胞内部的癌基因及抗癌基因相互作用，以及它们对肿瘤微环境的影响已经越来越清楚，这也使针对肿瘤的特异性分子靶点设计抗肿瘤治疗新方案成为可能。

利用肿瘤相关抗体可以完成对肿瘤的鉴别和诊断工作，也有助于对肿瘤机制做进一步的研究。



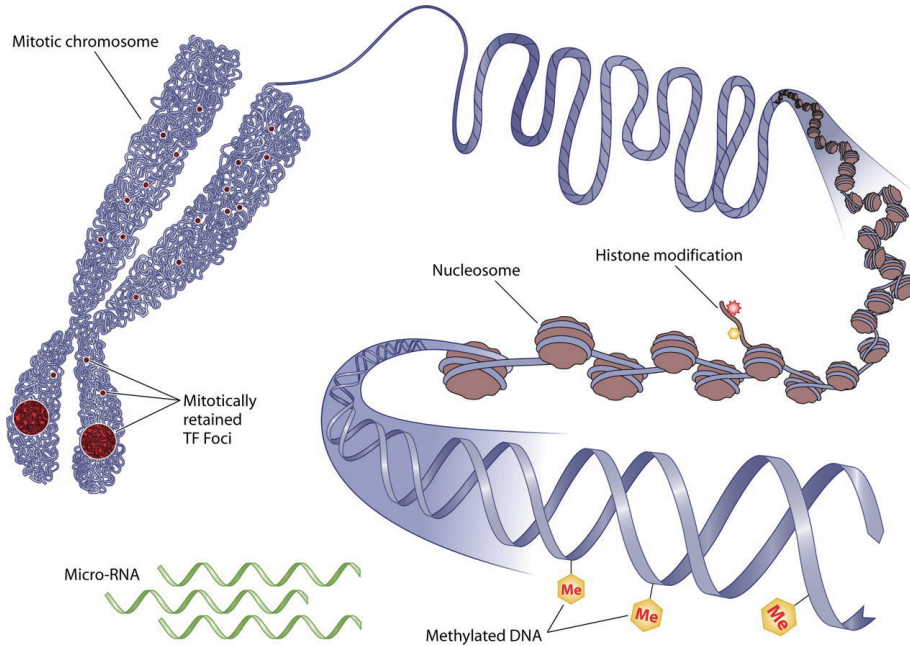
▲ p53 信号通路图

肿瘤相关抗体

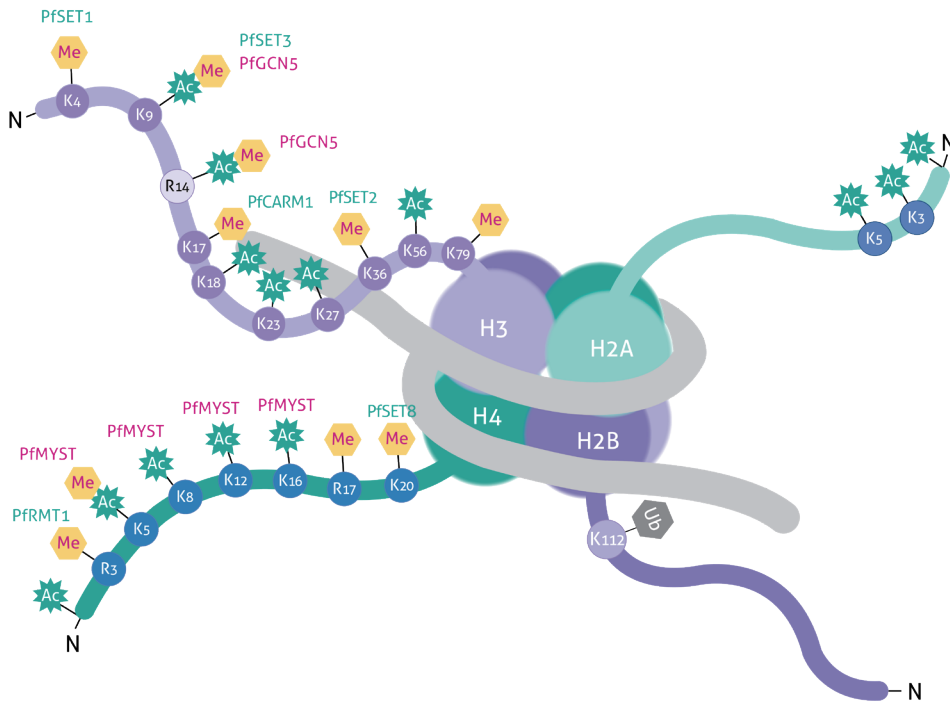
抗体名称	货号	抗体类型	应用	适用物种	文献
Annexin A2	11256-1-AP	Rabbit PAb	WB, IP, IHC, IF, ELISA	human, mouse, rat, chicken, monkey	21
Annexin A2	60051-1-Ig	Mouse MAb	WB, IP, IHC, IF, FC, ELISA	human, mouse	1
★ beta-Catenin	51067-2-AP	Rabbit PAb	WB, IP, IHC, IF, ELISA	human, mouse, rat, pig, cow, goat, hamster	146
★ beta-Catenin	66379-1-Ig	Mouse MAb	WB, IP, IHC, IF, COIP, ELISA	human, mouse, rat, pig	4
CA IX	11071-1-AP	Rabbit PAb	WB, IP, IHC, FC, ELISA	human, mouse, rat	8
CD146/MCAM	17564-1-AP	Rabbit PAb	WB, IP, IHC, IF, FC, ELISA	human, mouse, rat	4
CD146/MCAM	66153-1-Ig	Mouse MAb	WB, IHC, FC, ELISA	human	-
★ CD44	15675-1-AP	Rabbit PAb	WB, IP, IHC, IF, FC, ELISA	human, mouse, rat, bovine, sikadeer	67
★ CD44	60224-1-Ig	Mouse MAb	WB, IHC, IF, FC, ELISA	human, pig	7
CD68	66231-2-Ig	Mouse MAb	IHC, ELISA	human, mouse	1
CD71	66180-1-Ig	Mouse MAb	WB, IP, IHC, IF, FC, ELISA	human	-
CDK4	11026-1-AP	Rabbit PAb	WB, IP, IHC, IF, FC, CoIP, ELISA	human, mouse, rat, zebrafish	71
Claudin 18	66167-1-Ig	Mouse MAb	IP, IHC, ELISA	human, mouse	1
c-Met (Cytoplasmic)	25869-1-AP	Rabbit PAb	WB, IP, IHC, IF, ELISA	human, rat	6
Cytokeratin 14	10143-1-AP	Rabbit PAb	WB, IP, IHC, IF, FC, ELISA	human, mouse, rat	16
★ Cytokeratin 18	10830-1-AP	Rabbit PAb	WB, IP, IHC, IF, FC, ELISA	human, mouse, cow, rat	32
Cytokeratin 18	66187-1-Ig	Mouse MAb	WB, IHC, IF, FC, ELISA	human, mouse, rat	-
★ Cytokeratin 19	60187-1-Ig	Mouse MAb	WB, IHC, ELISA	human	1
Cytokeratin 7-specific	17513-1-AP	Rabbit PAb	WB, IP, IHC, IF, ELISA	human, mouse, rat	14
E-cadherin	20874-1-AP	Rabbit PAb	WB, IP, IHC, IF, FC, ELISA	human, mouse, rat, cow, pig	278
★ E-cadherin	60335-1-Ig	Mouse MAb	WB, IHC, IF, ELISA	human, pig, monkey	10
★ EPCAM	21050-1-AP	Rabbit PAb	WB, IHC, IF, FC, chip, ELISA	human, mouse, rat	15
EPCAM	66316-1-Ig	Mouse MAb	WB, IHC, IF, ELISA	human	-
ER	21244-1-AP	Rabbit PAb	WB, IHC, IF, ELISA	human, mouse, rat	21
★ HER2/ErbB2	18299-1-AP	Rabbit PAb	WB, IP, IHC, IF, FC, ELISA	human, mouse	14
HER2/ErbB2	60311-1-Ig	Mouse MAb	IHC, FC, ELISA	human	1
HSP60	66041-1-Ig	Mouse MAb	WB, IP, IHC, IF, FC, ELISA	human, mouse, rat	4
KI67	27309-1-AP	Rabbit PAb	IHC, IF, ELISA	human	71
MCM2	10513-1-AP	Rabbit PAb	WB, IP, IHC, IF, ELISA	human, mouse, rat	6
MME,CD10	18008-1-AP	Rabbit PAb	WB, IP, IHC, IF, FC, ELISA	human, mouse, rat	2
MME,CD10	60034-3-Ig	Mouse MAb	WB, IHC, ELISA	human, pig, mouse	-
NCAM1/CD56	14255-1-AP	Rabbit PAb	WB, IHC, IF, FC, ELISA	human, mouse, rat, pig	13
p120 Catenin	66208-1-Ig	Mouse MAb	WB, IHC, IF, ELISA	human, mouse, rat	-
P53	10442-1-AP	Rabbit PAb	WB, IP, IF, CoIP, chip, ELISA	human, rat, mouse, artemia, artemiasinica, pig, swine	244
P53	60283-2-Ig	Mouse MAb	WB, IHC, ELISA	human, rat, mouse	1
★ PAX8	10336-1-AP	Rabbit PAb	WB, IHC, IF, FC, ELISA	human, mouse, rat, bovine, zebrafish	252
PAX8	60145-4-Ig	Mouse MAb	WB, IHC, ELISA	human	1
PCNA	10205-2-AP	Rabbit PAb	WB, IP, IHC, IF, FC, ELISA	human, mouse, rat, zebrafish, american alligator, cow	165
PCNA	60097-1-Ig	Mouse MAb	WB, IP, IHC, IF, FC, ELISA	human, mouse, pig, rat, rabbit	18
PR	66300-1-Ig	Mouse MAb	IHC, ELISA	human	-
TTF1	66034-1-Ig	Mouse MAb	WB, IHC, ELISA	human, pig	-
UCHL1	66230-1-Ig	Mouse MAb	WB, IHC, IF, ELISA	human, mouse, pig, rat	1
★ Vimentin	10366-1-AP	Rabbit PAb	WB, IHC, IF, FC, ELISA	human, mouse, rat, sikadeer	246
Vimentin	60330-1-Ig	Mouse MAb	WB, IHC, IF, FC, ELISA	human, mouse, rat	12

★: Proteintech 明星抗体

表观遗传学 (Epigenetics) 是指基于非基因序列改变所致基因表达水平的变化, 包括 DNA 甲基化、组蛋白修饰、染色体重塑和非编码 RNA 调控等, 主要通过对基因转录或翻译过程的调控, 影响其功能和特性。



▲ 染色质的结构



▲ 组蛋白修饰

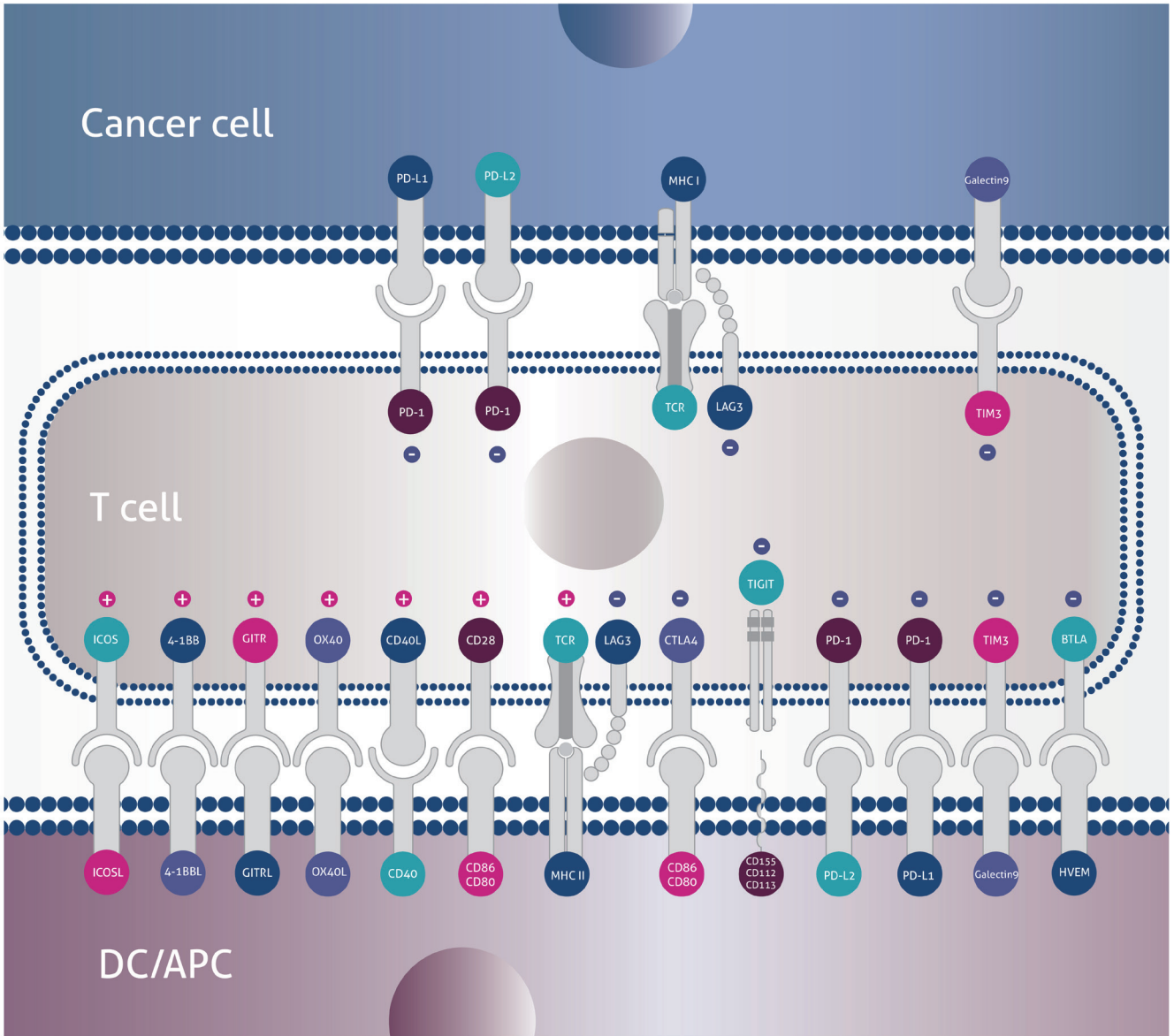
表观遗传学相关抗体

抗体名称	货号	抗体类型	应用	适用物种	文献
★ 5-Carboxylcytosine (5-caC)	61225	Rabbit PAb	WB, IF, DB, IHC, ICC	not species specific	11
5-Formylcytosine (5-fC)	61223	Rabbit PAb	WB, IF, DB, IHC, ICC	not species specific	11
5-Hydroxymethylcytosine(5-hmC)	39769	Rabbit PAb	MeDIP, IF, DB, IHC, FC, ICC	human, mouse, not species specific	155
5-Hydroxymethylcytosine(5-hmC)	39999	Mouse MAb	MeDIP, IF, DB, IHC, ICC	human, mouse, not species specific	9
5-Methylcytosine (5-mC)	39649	Mouse MAb	MeDIP, IF, DB, IHC, ICC	human, not species specific	42
5-Methylcytosine (5-mC)	61255	Rabbit PAb	ChIP, MeDIP, DB, IHC	human, not species specific	8
★ Histone H1.0	17510-1-AP	Rabbit PAb	WB, IHC, IF	human, mouse, rat	6
★ Histone H2A.X	10856-1-AP	Rabbit PAb	WB, IHC, IF, FC	human, mouse, rat	29
★ Histone H2B	15857-1-AP	Rabbit PAb	WB, IHC, IP	human, mouse, rat	7
Histone H3ac (pan-acetyl)	39139	Rabbit PAb	ChIP, ChIP-seq, WB, IF, ICC	human, wide range predicted	38
Histone H3K18ac	39755	Rabbit PAb	ChIP, ChIP-seq, WB, IF, DB, ICC	human, wide range predicted	8
Histone H3K27ac	39133	Rabbit PAb	ChIP, ChIP-seq, WB, IF, DB, IHC, ICC	budding yeast, human, wide range predicted	20
Histone H3K27ac	39685	Mouse MAb	ChIP, ChIP-seq, WB, IF, DB, ICC	human, wide range predicted	16
Histone H3K27me1	61015	Mouse MAb	ChIP, ChIP-seq, WB, IF, DB, IHC	human, wide range predicted	8
Histone H3K27me2me3	39535	Mouse MAb	ChIP, ChIP-seq, WB, IF	human, mouse, wide range predicted	34
★ Histone H3K27me3	39155	Rabbit PAb	ChIP, ChIP-seq, WB, IF, DB, IHC, ICC	human, mouse, wide range predicted	168
Histone H3K27me3	61017	Mouse MAb	ChIP, ChIP-seq, WB, IF, DB, ICC	human, mouse, wide range predicted	28
Histone H3K36me3	61101	Rabbit PAb	ChIP, ChIP-seq, WB, IF, DB, IHC	human, mouse, wide range predicted	26
Histone H3K36me3	61021	Mouse MAb	ChIP, ChIP-seq, WB, IF, DB	human, mouse, wide range predicted	8
Histone H3K4me1	39297	Rabbit PAb	ChIP, ChIP-seq, WB, IF, DB, ICC	human, mouse, wide range predicted	35
Histone H3K4me1	39635	Mouse MAb	ChIP, ChIP-seq, WB, DB	human, wide range predicted	6
Histone H3K4me3	39159	Rabbit PAb	ChIP, ChIP-seq, WB, IF, DB, IHC, ICC	budding yeast, human, mouse, wide range predicted	212
Histone H3K56ac	39281	Rabbit PAb	ChIP, ChIP-seq, WB, DB	budding yeast, human, wide range predicted	20
Histone H3K79me2	39143	Rabbit PAb	ChIP, ChIP-seq, WB, DB	human, wide range predicted	10
Histone H3K9ac	39917	Rabbit PAb	ChIP, ChIP-seq, WB, IF, DB, ICC	human, mouse, wide range predicted	21
Histone H3K9me2	39239	Rabbit PAb	ChIP, WB, DB, ICC, IF	human, mouse, wide range predicted	21
Histone H3K9me3	39161	Rabbit PAb	ChIP, ChIP-seq, WB, IF, DB, IHC, ICC	fission yeast, human, wide range predicted	111
Histone H3K9me3	61013	Mouse MAb	ChIP, WB, DB, ICC, IF	human, wide range predicted	13
★ Histone H4	16047-1-AP	Rabbit PAb	WB, IHC, IP, CHIP	human, mouse, rat	17
Histone H4ac (pan-acetyl)	39925	Rabbit PAb	ChIP, ChIP-seq, WB, IF, DB, ICC, IHC	human, mouse, wide range predicted	14
Histone H4K16ac	39167	Rabbit PAb	ChIP, ChIP-seq, WB, IF, DB	budding yeast, drosophila, human, mouse, wide range predicted	39
Histone H4R3me2a (asymmetric)	39705	Rabbit PAb	ChIP, WB, IF, DB	human, wide range predicted	16
★ Histone-H3	17168-1-AP	Rabbit PAb	WB, IHC, IF, FC	human, mouse, rat	50
HMGB1	10829-1-AP	Rabbit PAb	WB, IHC, IF, IP	human, mouse, rat	62
KDM3A	12835-1-AP	Rabbit PAb	WB, IHC, IF, IP	human, mouse, rat	16
METTL3	15073-1-AP	Rabbit PAb	WB, IHC, IP	human, mouse, rat	49
NF-κB p65	10745-1-AP	Rabbit PAb	WB, IHC, IF, IP, FC	human, mouse, rat	299
p300	61401	Mouse MAb	ChIP, ChIP-seq, WB, IF, IP, ICC	human	9
P53	10442-1-AP	Rabbit PAb	WB, IF, IP	human, mouse, rat	278
RNA pol II	39097	Mouse MAb	ChIP, ChIP-seq, WB, DB	budding yeast, C. elegans, human, mouse, rat	37
RNA pol II CTD phospho Ser2	61083	Rat MAb	ChIP, ChIP-seq, WB, IF, IP, ICC	human, mouse	17
SETDB1	11231-1-AP	Rabbit PAb	WB, IHC, IP	human, mouse, rat	25
SIRT1	13161-1-AP	Rabbit PAb	WB, IHC, IF, IP	human	68
Tet1	61443	Rabbit PAb	ChIP, ChIP-seq	human, mouse	7
BMI1	10832-1-AP	Rabbit PAb	WB, IHC, IF, IP	human, mouse	10
CTCF	61311	Rabbit PAb	ChIP, ChIP-seq, WB, IF, IHC, EMSA, ICC	human	17
CtlP	61141	Mouse MAb	WB, IF, IP, ICC	human	18
DNMT1	24206-1-AP	Rabbit PAb	WB, IF, IP	human, rat	19
HDAC1	10197-1-AP	Rabbit PAb	WB, IHC, IF, IP, FC	human, mouse, rat	26
★ HIF1α	20960-1-AP	Rabbit PAb	WB, IHC, IF, IP, FC	human	115

★: Proteintech 明星抗体

免疫学是研究生物体对抗原物质免疫应答性及其方法的生物学科学。免疫应答是机体对抗原刺激的反应，也是对抗原物质进行识别和排除的一种生物学过程。免疫学涉及免疫识别、应答和调节，以及免疫机制在相关疾病发生发展中的作用，还涉及免疫学技术在疾病诊断、质量和预防中的应用。

随着对各种免疫细胞类群和免疫相关分子不断深入的了解，肿瘤的免疫疗法得到越来越多的关注，基础研究与临床应用的关系也日趋密切。



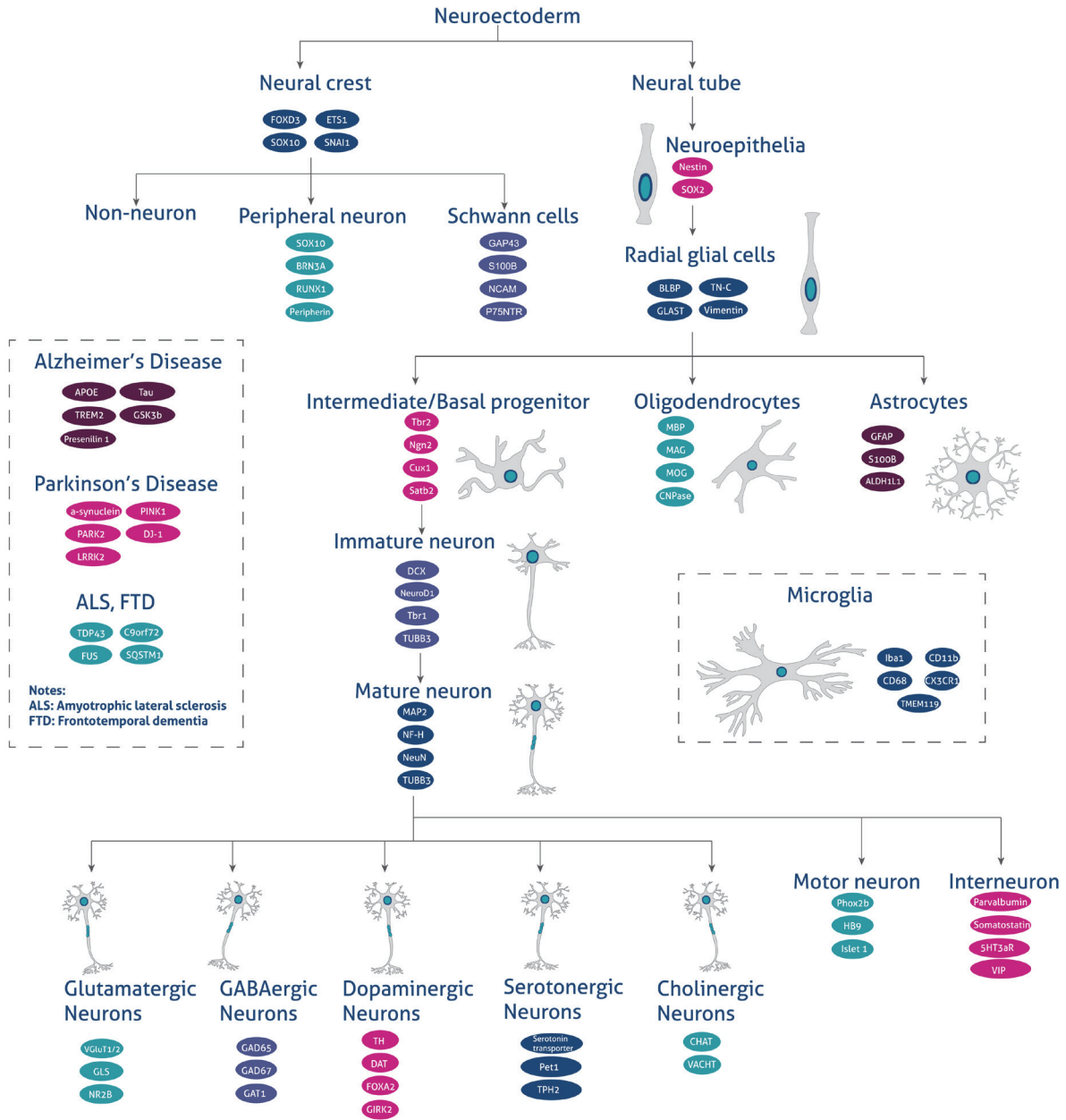
▲ 免疫检查点

免疫学相关抗体

抗体名称	货号	抗体类型	应用	适用物种	文献
BST2	13560-1-AP	Rabbit PAb	WB, IHC, IF, FC, ELISA	human	10
CD11c	60258-1-Ig	Mouse MAb	WB, IHC, IF, ELISA	human, pig	3
CD13	66211-1-Ig	Mouse MAb	WB, IHC, IF, ELISA	human	2
CD14	60253-1-Ig	Mouse MAb	WB, IHC, IF, ELISA	human, mouse	2
CD19	27949-1-AP	Rabbit PAb	WB, IHC, ELISA	human	-
★ CD20	24828-1-AP	Rabbit PAb	WB, IP, IHC, IF, FC, ELISA	human	1
★ CD20	60271-1-Ig	Mouse MAb	WB, IHC, IF, FC, ELISA	human	1
CD22	66103-1-Ig	Mouse MAb	WB, IHC, IF, ELISA	human	-
CD23	18642-1-AP	Rabbit PAb	WB, IHC, FC, ELISA	human	-
CD23	60208-2-Ig	Mouse MAb	WB, IHC, IF, ELISA	human, mouse	-
★ CD3	17617-1-AP	Rabbit PAb	WB, IP, IHC, IF, FC, ELISA	human, pig, mouse	10
★ CD3	60181-1-Ig	Mouse MAb	WB, IHC, IF, FC, ELISA	human	1
CD31	11265-1-AP	Rabbit PAb	WB, IP, IHC, IF, FC, ELISA	human, monkey	45
CD31	66065-1-Ig	Mouse MAb	WB, IHC, IF, ELISA	human	5
CD34	14486-1-AP	Rabbit PAb	WB, IHC, IF, ELISA	human, cattle	13
CD43	66224-1-Ig	Mouse MAb	WB, IHC, IF, ELISA	human	-
CD44	15675-1-AP	Rabbit PAb	WB, IP, IHC, IF, FC, ELISA	human, mouse, rat, bovine, sikadeer	67
CD44	60224-1-Ig	Mouse MAb	WB, IHC, IF, FC, ELISA	human, pig	7
★ CD68	66231-2-Ig	Mouse MAb	IHC, ELISA	human, mouse	1
ICAM-1	10831-1-AP	Rabbit PAb	WB, IP, IHC, IF, FC, ELISA	human, bovine	46
IFIT3	15201-1-AP	Rabbit PAb	WB, IP, IF, ELISA	human, monkey, mouse, pig	8
IFITM1-Specific	60074-1-Ig	Mouse MAb	WB, IP, IHC, IF, FC, ELISA	human, mouse	24
IFITM2	12769-1-AP	Rabbit PAb	WB, IP, IHC, IF, FC, ELISA	human, mouse	24
IFITM3	11714-1-AP	Rabbit PAb	WB, IP, IHC, IF, FC, ELISA	human, mouse, rat, goat	49
★ IL1 beta	66737-1-Ig	Mouse MAb	WB, IHC, ELISA	human	-
IL-17	66148-1-Ig	Mouse MAb	WB, FC, ELISA	human	2
IL18	10663-1-AP	Rabbit PAb	WB, IP, IHC, IF, ELISA	human, rat	13
IL-4	66142-1-Ig	Mouse MAb	WB, IHC, FC, ELISA	human, rat	5
IL-6	21865-1-AP	Rabbit PAb	WB, IHC, IF, ELISA	human, dog, goat, mouse, rat	90
Interferon gamma	15365-1-AP	Rabbit PAb	IHC, IF, ELISA	human, rat	29
MAVS	14341-1-AP	Rabbit PAb	WB, IP, IHC, IF, ELISA	human, mouse	13
NF- κ B	14220-1-AP	Rabbit PAb	WB, IP, IHC, IF, ELISA	human, rat, calf, chicken, mouse	57
PD-1	18106-1-AP	Rabbit PAb	WB, IHC, IF, ELISA	human, mouse	3
PD-1	66220-1-Ig	Mouse MAb	WB, IHC, IF, ELISA	human, rat, mouse	-
★ PD-L1	66248-1-Ig	Mouse MAb	WB, IHC, IF, FC, ELISA	human, mouse, pig, rat	17
SAMHD1	12586-1-AP	Rabbit PAb	WB, IP, IHC, IF, FC, ELISA	human, mouse, rat, monkey	32
TLR4	19811-1-AP	Rabbit PAb	WB, IHC, IF, ELISA	human, mouse, rat, calf, hamster	80
★ TNF alpha	17590-1-AP	Rabbit PAb	WB, ELISA	human, mouse, rat	70
★ TNF alpha	60291-1-Ig	Mouse MAb	WB, IHC, IF, FC, ELISA	human, mouse, rat, chicken	71
VPRBP	11612-1-AP	Rabbit PAb	WB, IP, IHC, IF, FC, ELISA	human, mouse, rat, dog	27

★: Proteintech 明星抗体

神经生物学是一门研究神经系统结构和功能的科学。多年来，由于脑功能的复杂性，这类疾病的治疗一直是个难题，而大脑的结构和功能也是生命科学研究中最具有挑战性的课题。



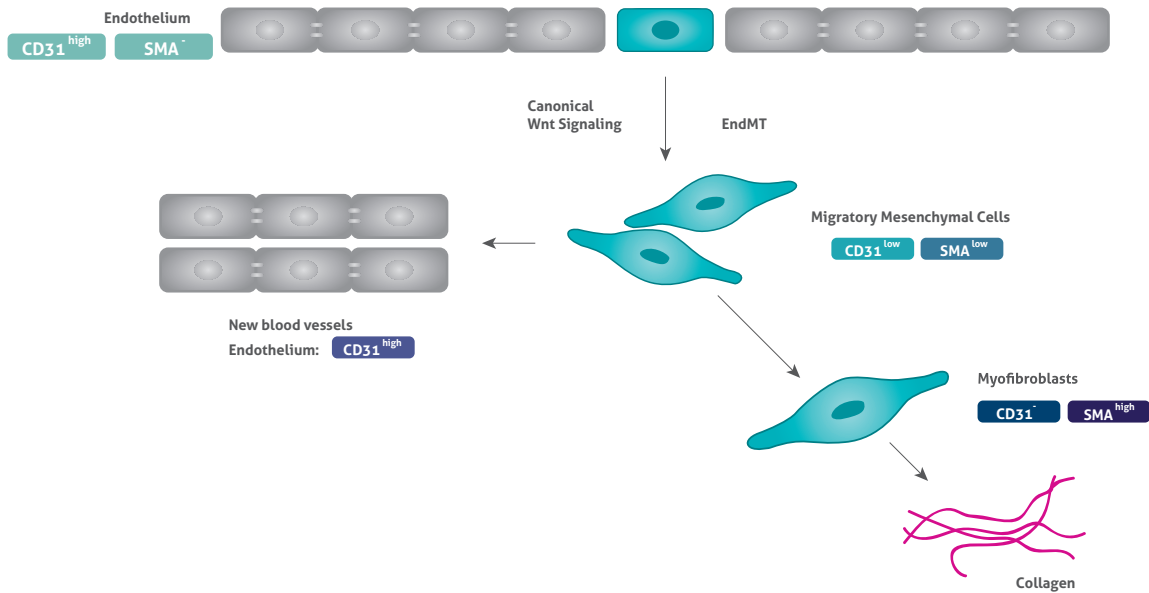
▲ 神经细胞标记物

神经生物学相关抗体

抗体名称	货号	抗体类型	应用	适用物种	文献
C9orf72	22637-1-AP	Rabbit PAb	WB, IP, IHC, IF, ELISA	human, mouse, rat	11
C9orf72	66140-1-Ig	Mouse MAb	WB, IP, IHC, IF, ELISA	human, mouse, rat	4
Calbindin-D28k	14479-1-AP	Rabbit PAb	WB, IP, IHC, IF, ELISA	human, mouse, rat	6
CUX1	11733-1-AP	Rabbit PAb	WB, IP, IHC, IF, ELISA	human, mouse, rat	3
DACH1	60082-1-Ig	Mouse MAb	WB, IHC, IF, ELISA	human, rat, mouse	-
★ FUS/TLS	60160-1-Ig	Mouse MAb	WB, IP, IHC, IF, FC, ELISA	human, mouse, drosophila	10
GAC-specific	19958-1-AP	Rabbit PAb	WB, IP, IHC, IF, ELISA	human, mouse, rat	12
Galectin-3	60207-1-Ig	Mouse MAb	WB, IHC, IF, ELISA	human, mouse, rat	6
GAP43	16971-1-AP	Rabbit PAb	WB, IP, IHC, IF, ELISA	human, mouse, rat, hamsters	8
★ GFAP	16825-1-AP	Rabbit PAb	WB, IHC, IF, ELISA	human, mouse, rat, hamster, hamsters, swine	95
Glutamate receptor 2	11994-1-AP	Rabbit PAb	WB, IP, IHC, FC, ELISA	human, mouse, rat	10
Glutamine synthetase	66323-1-Ig	Mouse MAb	WB, IHC, IF, ELISA	human, pig	-
Granulin	18410-1-AP	Rabbit PAb	WB, IP, IHC, ELISA	human, mouse, rat	5
GRIN2B	21920-1-AP	Rabbit PAb	WB, IP, IHC, IF, FC, ELISA	human, mouse, rat, zebrafishes	19
HOMER1	12433-1-AP	Rabbit PAb	WB, IP, IHC, IF, FC, ELISA	human, mouse, rat	5
IBA1	10904-1-AP	Rabbit PAb	IHC, IF, ELISA	human, mouse, rat, hamster, swine	105
MEF2C	10056-1-AP	Rabbit PAb	IHC, IF, ELISA	human, mouse, rat, hamster, hamsters, swine	105
Myelin basic protein	10458-1-AP	Rabbit PAb	WB, IHC, IF, ELISA	human, mouse, rat	7
Nestin	66259-1-Ig	Mouse MAb	WB, FC, ELISA	human, mouse, rat	8
★ NeuN	26975-1-AP	Rabbit PAb	WB, IHC, IF, ELISA	human, mouse, rat, pig	7
NF-H	18934-1-AP	Rabbit PAb	WB, IHC, IF, ELISA	human, mouse, rat	8
NF-M	25805-1-AP	Rabbit PAb	WB, IHC, IF, ELISA	human, rat, mouse	1
NF-M-specific	20664-1-AP	Rabbit PAb	WB, IP, IHC, IF, ELISA	human, mouse, rat	-
NRF2	16396-1-AP	Rabbit PAb	WB, IP, IHC, IF, FC, ELISA	human, mouse, rat, bovine, hamsters, ostrichchick, pig	134
NSE	66150-1-Ig	Mouse MAb	WB, IHC, IF, ELISA	human, mouse, rat, pig	2
p75NTR	55014-1-AP	Rabbit PAb	WB, IP, IHC, IF, FC, ELISA	human, mouse, rat	7
PAX6	12323-1-AP	Rabbit PAb	WB, IHC, IF, FC, ELISA	human, mouse, rat	14
PSD95-Specific,DLG4	20665-1-AP	Rabbit PAb	WB, IP, IF, ELISA	human, mouse, rat, hamster, hamsters	25
S100 beta	66616-1-Ig	Mouse MAb	WB, IHC, IF, ELISA	human, pig, rat, mouse	2
SMN	11708-1-AP	Rabbit PAb	WB, IP, IHC, IF, ECLIA, ELISA	human, mouse, rat	8
SMN (Human-Specific)	60154-1-Ig	Mouse MAb	WB, IP, IHC, IF, FC, ELISA	human	-
SOX2	66411-1-Ig	Mouse MAb	WB, IHC, IF, ELISA	human, pig, mouse	1
★ Synaptophysin	17785-1-AP	Rabbit PAb	WB, IP, IHC, IF, ELISA	human, mouse, rat, hamster, hamsters	24
★ Synaptophysin	60191-1-Ig	Mouse MAb	WB, IHC, IF, ELISA	human, mouse, rat, pig	2
TAU	10274-1-AP	Rabbit PAb	WB, IHC, IF, ELISA	human, mouse, rat	5
TAU	66499-1-Ig	Mouse MAb	WB, IHC, ELISA	human, mouse, rat, pig	2
★ TBR1	20932-1-AP	Rabbit PAb	WB, IP, IHC, IF, ELISA	human, mouse, rat	20
★ TBR1	66564-1-Ig	Mouse MAb	WB, IHC, IF, ELISA	human, rat, mouse, pig	-
★ TDP-43	10782-2-AP	Rabbit PAb	WB, RIP, IP, Immunoelectron, IHC, IF, FC, CoIP, ChIP, ELISA	human, mouse, rat, zebrafish, C.elegans, chicken, dog, drosophila, fly, hamster, horse, monkey	945
TDP-43 (human specific)	60019-2-Ig	Mouse MAb	WB, IP, IHC, FC, CoIP, ELISA	human	43
★ TUBB3-specific	66375-1-Ig	Mouse MAb	WB, IHC, IF, FC, ELISA	human, mouse, rat	4
Vimentin	60330-1-Ig	Mouse MAb	WB, IHC, IF, FC, ELISA	human, mouse, rat	12

★: Proteintech 明星抗体

心血管疾病是心脏血管和脑血管疾病的统称，泛指由于高脂血症、血液粘稠、动脉粥样硬化、高血压等所导致的心脏、大脑及全身组织发生的缺血性或出血性疾病，具有高患病率、高致残率和高死亡率的特点。利用心血管相关抗体有助于对心血管疾病机制做进一步深入的研究。



▲ 心肌梗死后心脏修复细胞生成的示意图

Smooth Muscle Actin Antibody

货号: 14395-1-AP

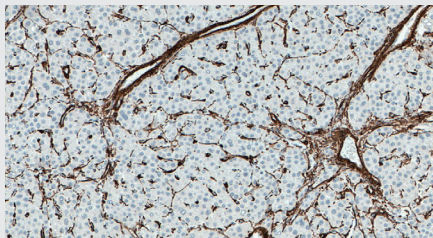
175 Publications

检测应用:

WB, IP, IHC, IF, FC, ELISA

适用物种:

human, mouse, rat



Tissue: human liver cancer

CD31 Antibody

货号: 66065-1-Ig

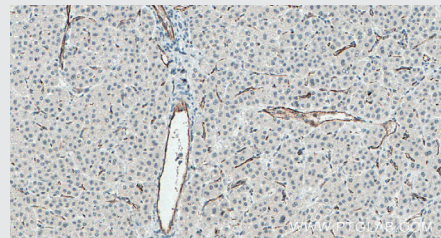
5 Publications

检测应用:

WB, IHC, IF, ELISA

适用物种:

human



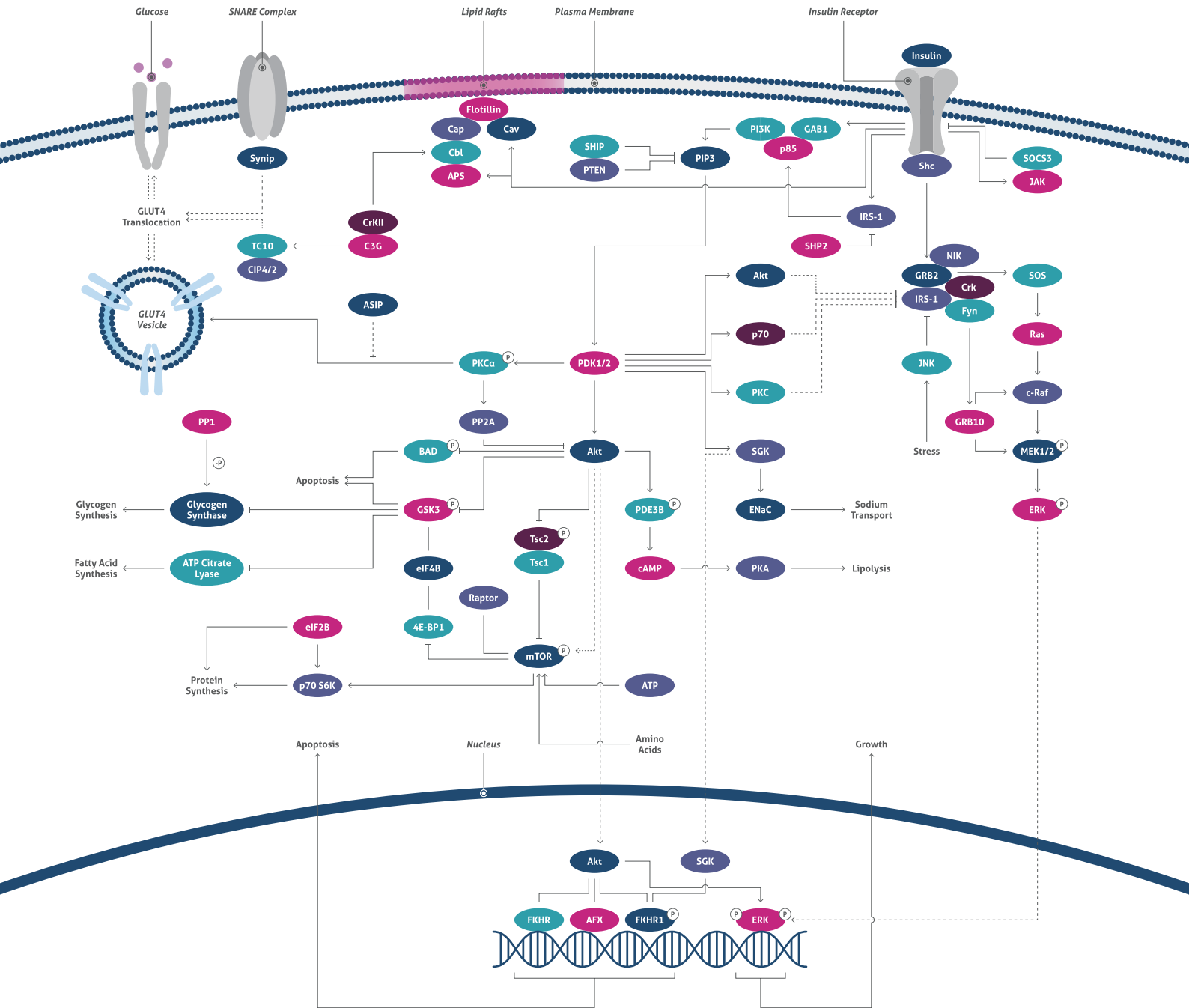
Tissue: human liver cancer

心血管相关抗体

抗体名称	货号	抗体类型	应用	适用物种	文献
★ ACTA2/smooth muscle actin	14395-1-AP	Rabbit PAb	WB, IP, IHC, IF, FC, ELISA	human, mouse, rat	144
★ alpha Actinin	11313-2-AP	Rabbit PAb	WB, IHC, IF, ELISA	human, mouse, rat	2
CALD1	66693-1-Ig	Mouse MAb	WB, IHC, IF, ELISA	human, mouse, rat	-
Caldesmon	20887-1-AP	Rabbit PAb	WB, IHC, IF, ELISA	human, mouse	3
Calponin	13938-1-AP	Rabbit PAb	WB, IP, IHC, IF, ELISA	human, mouse, rat	10
Calponin	66540-1-Ig	Mouse MAb	WB, IHC, ELISA	human	-
★ Cardiac Troponin I	21652-1-AP	Rabbit PAb	WB, IP, IHC, IF, ELISA	human, mouse, rat	3
★ Cardiac Troponin I	66376-1-Ig	Mouse MAb	WB, IHC, IF, ELISA	human, mouse, rat	1
★ Cardiac Troponin T	15513-1-AP	Rabbit PAb	WB, IHC, IF, ELISA	human, mouse, rat	5
CD146/MCAM	17564-1-AP	Rabbit PAb	WB, IP, IHC, IF, FC, ELISA	human, mouse, rat	4
CD146/MCAM	66153-1-Ig	Mouse MAb	WB, IHC, FC, ELISA	human	-
★ CD31	11265-1-AP	Rabbit PAb	WB, IP, IHC, IF, FC, ELISA	human, monkey	45
★ CD31	66065-1-Ig	Mouse MAb	WB, IHC, IF, ELISA	human	5
CD34	14486-1-AP	Rabbit PAb	WB, IHC, IF, ELISA	human, cattle	13
CD34	60180-1-Ig	Mouse MAb	WB, IHC, IF, ELISA	human	6
CD45	60287-1-Ig	Mouse MAb	WB, IHC, FC, ELISA	human, pig	-
Endoglin/CD105	28117-1-AP	Rabbit PAb	WB, IHC, ELISA	human	-
GATA4-Specific	19530-1-AP	Rabbit PAb	WB, IP, IHC, IF, ChiP, ELISA	human, mouse, rat, monkey	9
★ ICAM-1	10831-1-AP	Rabbit PAb	WB, IP, IHC, IF, FC, ELISA	human, bovine	46
★ ICAM-1	60299-1-Ig	Mouse MAb	WB, IHC, IF, FC, ELISA	human	12
LYVE1	51011-1-AP	Rabbit PAb	WB, ELISA	human	2
MLC-2V	10906-1-AP	Rabbit PAb	WB, IP, IHC, IF, FC, ELISA	human, mouse, rat, zebrafish, monkey	105
MYH3	22287-1-AP	Rabbit PAb	WB, IP, ELISA	human, mouse	2
MYH7-specific	22280-1-AP	Rabbit PAb	WB, IP, IHC, IF, ELISA	human, mouse, rat	9
NKX2-5	13921-1-AP	Rabbit PAb	WB, IHC, ELISA	human, mouse, rat	4
NPPA	27426-1-AP	Rabbit PAb	WB, IHC, ELISA	human, mouse	1
SMMHC	21404-1-AP	Rabbit PAb	WB, IHC, IF, ELISA	human, mouse, rat	8
SMMHC	60222-1-Ig	Mouse MAb	WB, IHC, IF, ELISA	human, mouse, rat, pig	-
SMTN	23567-1-AP	Rabbit PAb	WB, IHC, ELISA	human, mouse	1
★ Thrombomodulin	14318-1-AP	Rabbit PAb	WB, IHC, IF, FC, ELISA	human	3
★ transgelin/SM22	10493-1-AP	Rabbit PAb	WB, IHC, IF, FC, ELISA	human, mouse, rat	35
transgelin/SM22	60213-1-Ig	Mouse MAb	WB, IHC, IF, FC, ELISA	human, rat, pig, mouse	2
VCAM-1	11444-1-AP	Rabbit PAb	IHC, IF, FC, ELISA	human	28
VCAM-1	66294-1-Ig	Mouse MAb	WB, IHC, ELISA	human	3
VWF	66682-1-Ig	Mouse MAb	IHC, ELISA	human	-
VWF	11778-1-AP	Rabbit PAb	WB, IP, IHC, IF, ELISA	human, mouse, rat, pig	25

★: Proteintech 明星抗体

内分泌系统是由内分泌腺和某些内分泌细胞组成的一个体内信息传递系统。任何一种内分泌细胞的功能失常所致的一种激素分泌过多或缺乏，都可引起相应的生理代谢变化，如糖和脂类代谢异常，会引起一系列相关疾病，如糖尿病，肥胖症等。



▲ 胰岛素通路图

内分泌与代谢相关抗体

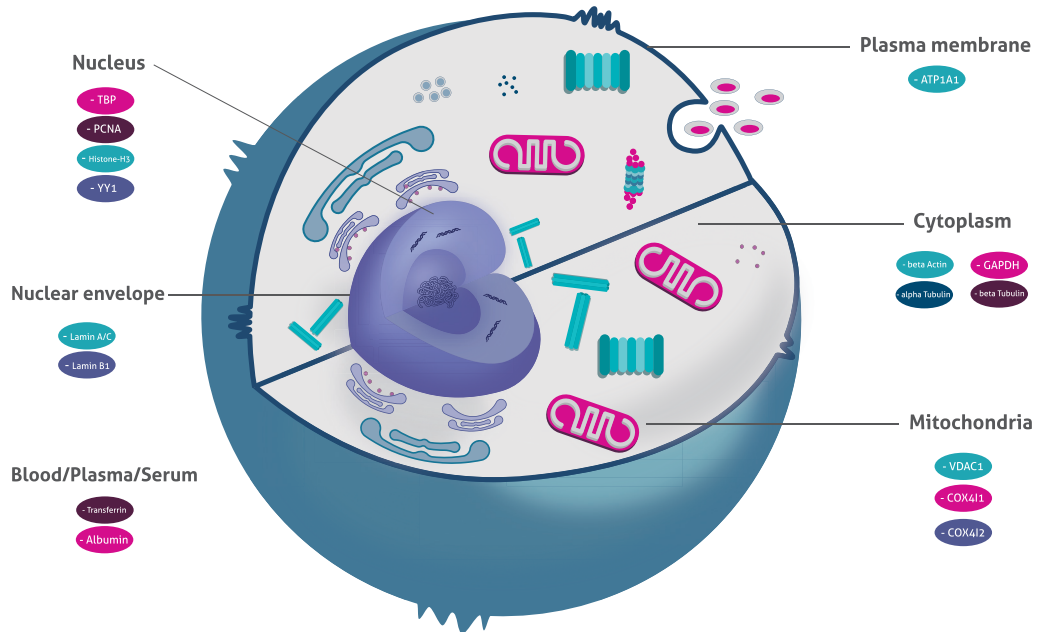
抗体名称	货号	抗体类型	应用	适用物种	文献
★ ADIPOQ	21613-1-AP	Rabbit PAb	WB, IHC, IF, ELISA	human, mouse	2
★ ADIPOQ	66239-1-Ig	Mouse MAb	WB, IHC, IF, ELISA	human, mouse	-
★ APOL1	11486-2-AP	Rabbit PAb	WB, IP, IHC, IF, FC, ELISA	human	10
★ APOL1	66124-1-Ig	Mouse MAb	WB, IP, IHC, IF, FC, ELISA	human	4
Angiotensinogen	11992-1-AP	Rabbit PAb	WB, IHC, FC, ELISA	human, mouse	6
ATGL	55190-1-AP	Rabbit PAb	WB, IP, IF, ELISA	human, mouse, rat	7
BDNF	28205-1-AP	Rabbit PAb	WB, IF, ELISA	human, mouse, rat	11
C3/C3b/C3c	21337-1-AP	Rabbit PAb	WB, IP, IHC, IF, ELISA	human, rat, mouse	4
C3/C3b/C3c	66157-1-Ig	Mouse MAb	WB, IHC, IF, ELISA	human	-
★ Gastrin	18143-1-AP	Rabbit PAb	IHC, ELISA	human	-
★ Gastrin	60346-1-Ig	Mouse MAb	IHC, ELISA	human	-
GDF15	27455-1-AP	Rabbit PAb	WB, IHC, ELISA	human, mouse	1
★ Glucagon	15954-1-AP	Rabbit PAb	IHC, IF, ELISA	human, mouse, rat	6
Glucocorticoid receptor	24050-1-AP	Rabbit PAb	WB, IP, IF, CoIP, ChIP, ELISA	human, mouse, rat, rare minnows	21
Growth hormone	27079-1-AP	Rabbit PAb	WB, IHC, ELISA	human	-
hCG alpha	25014-1-AP	Rabbit PAb	WB, IHC, ELISA	human	1
★ Insulin	15848-1-AP	Rabbit PAb	IHC, IF, ELISA	human, mouse, rat	14
★ Insulin	66198-1-Ig	Mouse MAb	IHC, IF, ELISA	human, mouse, rat	2
LEPR	20966-1-AP	Rabbit PAb	WB, IP, IHC, IF, FC, ELISA	human, mouse, rat	4
★ Leptin	17436-1-AP	Rabbit PAb	IHC, IF, ELISA	human, mouse	1
METTL3	15073-1-AP	Rabbit PAb	WB, IP, IHC, IF, CoIP, ELISA	human, mouse, rat, drosophila, zebrafish	46
Osteocalcin	23418-1-AP	Rabbit PAb	IHC, IF, ELISA	human, mouse, rat, swine	17
★ Perilipin 2	15294-1-AP	Rabbit PAb	WB, IHC, IF, ELISA	human, mouse, rat, monkey	11
★ Perilipin 2	60340-1-Ig	Mouse MAb	WB, IHC, ELISA	human	-
POMC	66358-1-Ig	Mouse MAb	WB, IHC, IF, ELISA	human, rat, mouse, pig	-
PPAR gamma	16643-1-AP	Rabbit PAb	WB, IP, IHC, IF, CoIP, ChIP, ELISA	human, mouse, rat	68
PR	25871-1-AP	Rabbit PAb	WB, IHC, ELISA	human, mouse	-
PR	66300-1-Ig	Mouse MAb	IHC, ELISA	human	-
PTH-Specific	19001-1-AP	Rabbit PAb	WB, ELISA	human	-
TRAPPC9,NIBP	66131-1-Ig	Mouse MAb	WB, IHC, ELISA	human, mouse	-
TSH beta	66750-1-Ig	Mouse MAb	IHC, ELISA	human	-
UCP1	23673-1-AP	Rabbit PAb	WB, IHC, ELISA	human, mouse, rat	11
UCP2	66700-1-Ig	Mouse MAb	WB, ELISA	human	-
UCP3	10750-1-AP	Rabbit PAb	WB, IHC, ELISA	human, mouse, rat	3
USP8	27791-1-AP	Rabbit PAb	WB, IHC, ELISA	human, mouse	1
XBP1	25997-1-AP	Rabbit PAb	WB, IHC, IF, ELISA	human, mouse, rat	12

★: Proteintech 明星抗体

内参及标签抗体 Loading Control and Tag Antibodies

内参即是内部参照 (Internal Control)，对于哺乳动物细胞表达来说一般是指由管家基因编码表达的蛋白 (Housekeeping Proteins)，它们在各组织和细胞中的表达相对恒定，在检测蛋白的表达水平变化时常用它来做参照物。

内参抗体种类很多，其中包含全细胞或胞浆内参、膜内参、核蛋白内参等，比如 β -actin、 β -tubulin、GAPDH、Lamin B 等。

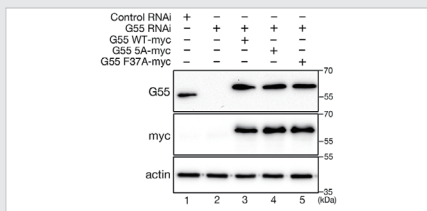


β -Actin Antibody

KD/KO validated

货号: 66009-1-Ig

641 Publications



引自 PMID: 29689198

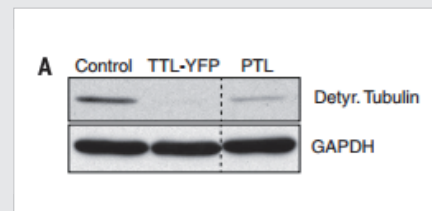
Selected citations:

1. Cell Res. 2019 Jul;29(7):548-561.
2. Nat Commun. 2019 May 30;10(1):2375.
3. Nat Commun. 2019 Apr 23;10(1):1858.
4. Sci Adv. 2019 Feb 27;5(2):eaau6328.
5. Nat Cell Biol. 2018 Nov;20(11):1256-1266.

GAPDH Antibody

货号: 60004-1-Ig

1767 Publications



引用自 PMID:25908662

Selected citations:

1. Nat Cell Biol. 2019 May;21(5):651-661.
2. Brain. 2019 May 1;142(5):1349-1364.
3. Sci Rep. 2019 Apr 8;9(1):5790.
4. Cell Rep. 2019 Mar 12;26(11):2984-2997.e4.
5. Sci Adv. 2019 Feb 13;5(2):eaav4971.

内参及标签相关抗体

	适用范围	名称	分子量	抗体类型	货号	应用	WB推荐稀释比	文献
内参抗体	胞浆或全细胞	GAPDH	36 kDa	鼠单抗	60004-1-Ig	WB, IP, IHC, IF, FC	1:5000-1:50000	1767
				兔多抗	10494-1-AP	WB, IP, IHC, IF, FC, CoIP	1:10000-1:40000	1168
		β-Actin	42 kDa	鼠单抗	66009-1-Ig	WB, IP, IHC, IF, FC	1:5000-1:50000	641
				兔多抗	20536-1-AP	WB, IHC, IF	1:5000-1:15000	402
		α-Tubulin	50-55 kDa	鼠单抗	66031-1-Ig	WB, IP, IHC, IF, FC	1:2000-1:10000	127
				兔多抗	11224-1-AP	WB, IP, IHC, IF, FC	1:800-1:8000	219
		β-Tubulin	50-55 kDa	鼠单抗	66240-1-Ig	WB, IP, IHC, IF	1:20000-1:100000	32
			兔多抗	10094-1-AP	WB, IP, IHC, IF, FC, CoIP	1:500-1:2000	111	
		Vinculin	117 kDa	鼠单抗	66305-1-Ig	WB, IHC, IF, FC	1:2000-1:20000	13
	细胞核膜	Lamin A/C	65-75 kDa	兔多抗	10298-1-AP	WB, IP, IF, FC	1:1000-1:6000	43
		Lamin B1	66-72 kDa	鼠单抗	66095-1-Ig	WB, IP, IHC, IF, FC	1:5000-1:50000	50
				兔多抗	12987-1-AP	WB, IP, IHC, IF, FC, CHIP	1:1000-1:6000	208
	细胞核	TBP	33-43 kDa*	鼠单抗	66166-1-Ig	WB, IP, IHC, IF, FC	1:2000-1:16000	3
				兔多抗	22006-1-AP	WB, IP, IHC, IF	1:500-1:3000	23
		PCNA	36 kDa	鼠单抗	60097-1-Ig	WB, IP, IHC, IF, FC	1:5000-1:50000	17
				兔多抗	10205-2-AP	WB, IP, IHC, IF, FC	1:2000-1:10000	176
		Histone-H3	15-17 kDa	兔多抗	17168-1-AP	WB, IHC, IF	1:1000-1:6000	136
				鼠单抗	66281-1-Ig	WB, IP, IHC, IF	1:5000-1:50000	8
	YY1	65-70 kDa	兔多抗	22156-1-AP	WB, IP, IHC	1:500-1:2000	2	
			兔多抗	14418-1-AP	WB, IP, IHC, IF	1:500-1:1000	25	
	膜蛋白	ATP1A1	97-110 kDa	兔多抗	55187-1-AP	WB, IHC, IF, FC	1:1000-1:4000	2
				兔多抗	55187-1-AP	WB, IHC, IF, FC	1:1000-1:4000	2
	线粒体	VDAC1/Porin	31-37 kDa	鼠单抗	66345-1-Ig	WB, IHC	1:5000-1:50000	2
				兔多抗	10866-1-AP	WB, IP, IHC, IF	1:500-1:3000	47
		COX4I1	17-20 kDa	鼠单抗	66110-1-Ig	WB, IHC, IF, FC	1:2000-1:8000	-
				兔多抗	11242-1-AP	WB, IP, IHC, IF, FC	1:5000-1:50000	88
	COX4I2	17-20 kDa	兔多抗	11463-1-AP	WB, IP, IHC, IF	1:500-1:3000	10	
	细胞增殖	BrdU	-	鼠单抗	66241-1-Ig	IHC, IF	-	13
	全血/血浆/血清	Transferrin	77 kDa	鼠单抗	66171-1-Ig	WB, IHC	1:2000-1:20000	-
				兔多抗	17435-1-AP	WB, IHC, IF	1:200-1:1000	8
Albumin		66 kDa	鼠单抗	66051-1-Ig	WB, IP, IHC, IF	1:5000-1:50000	3	
			兔多抗	16475-1-AP	WB, IP, IHC, IF	1:5000-1:50000	19	

*TBP在人类是37-43 kDa, 在小鼠和大鼠中是33-36 kDa

	名称	抗体类型	货号	应用	WB推荐稀释比	文献
标签抗体	6*His, His-tag	鼠单抗	66005-1-Ig	WB, IP, IF, FC	1:5000-1:50000	145
		兔多抗	10001-0-AP	WB	1:500-1:2000	8
	Flag tag	鼠单抗	66008-3-Ig	WB, IP, IF	1:1000-1:5000	2
		兔多抗	20543-1-AP	WB, IP, IHC, IF, FC, CoIP	1:200-1:1000	74
	GFP tag	鼠单抗	66002-1-Ig	WB, IP, IF	1:2000-1:16000	102
		兔多抗	50430-2-AP	WB, IP, IHC, IF	1:1000-1:4000	136
	GST tag	鼠单抗	66001-2-Ig	WB, IP, IF	1:5000-1:50000	2
		兔多抗	10000-0-AP	WB, IP, FC	1:1000-1:4000	43
	HA tag	鼠单抗	66006-2-Ig	WB, IP	1:10000-1:100000	5
		兔多抗	51064-2-AP	WB, IP, IF	1:1000-1:8000	71
	MYC tag	鼠单抗	60003-2-Ig	WB, IP, IF	1:2000-1:10000	16
		兔多抗	16286-1-AP	WB, IP, IF	1:1000-1:8000	21
	V5 tag	兔多抗	14440-1-AP	WB, IP	1:2000-1:20000	2
	S1 tag	鼠单抗	66165-1-Ig	WB	1:5000-1:50000	-
	MBP tag	鼠单抗	66003-1-Ig	WB, IP, IF	1:1000-1:8000	6
		兔多抗	15089-1-AP	WB	1:1000-1:6000	5

	适用范围	名称	货号	应用	WB推荐稀释比	文献
标记内参/标签抗体	HRP标记内参抗体	HRP-anti GAPDH	HRP-60004	WB	1:5000-1:50000	96
		HRP-anti β-Actin	HRP-66009	WB	1:2000-1:50000	-
		HRP-anti α-Tubulin	HRP-66031	WB	1:2000-1:16000	19
		HRP-anti β-Tubulin	HRP-66240	WB	1:2000-1:16000	-
	HRP标记标签抗体	HRP-anti 6*His, His-tag	HRP-66005	WB	1:5000-1:50000	19
		HRP-anti GFP tag	HRP-66002	WB	1:5000-1:50000	1
		HRP-anti GST tag	HRP-66001	WB	1:5000-1:50000	1
		HRP-anti Flag tag	HRP-66008	WB	1:5000-1:50000	1
	荧光标记内参抗体	CoraLite594-Conjugated Beta Actin	CL594-66009	IF	-	-
		CoraLite488-Conjugated Beta Actin	CL488-66009	IF, FC	-	-
		CoraLite594-Conjugated Alpha Tubulin	CL594-66031	IF	-	-
		CoraLite488-Conjugated Alpha Tubulin	CL488-66031	IF	-	-

	名称	货号	应用	WB推荐稀释比	文献
同型对照抗体	Mouse IgG1 isotype control	66360-1-Ig	WB, FC	1:500-1:2000	-

2018年9月-2019年9月 CNS 文献引用部分抗体目录

抗体名称	货号	引用期刊	PMID	抗体类型	应用	适用物种	文献
AKR1A1	15054-1-AP	Nature	30487609	Rabbit PAb	WB, IP, IHC, IF, ELISA	mouse, human, rat	1
★ ATF4	10835-1-AP	Cell	31416289	Rabbit PAb	WB, IP, IHC, IF, FC, ELISA	hamster, human, mouse, pig, rat, swine	105
ATF6	24169-1-AP	Nature	30971818	Rabbit PAb	WB, IP, IHC, IF, ELISA	human, mouse, rat, swine	50
CTSA	15020-1-AP	Nature	30728504	Rabbit PAb	WB, FC, ELISA	mouse, human, rat	2
CTSH	10315-1-AP	Nature	30728504	Rabbit PAb	WB, IHC, IF, FC, ELISA	human, mouse, rat	4
DDX58	20566-1-AP	Nature	30626973	Rabbit PAb	WB, IP, IF, ELISA	human, mouse	8
EEF1A1	11402-1-AP	Cell	30449621	Rabbit PAb	WB, IHC, IF, ELISA	human, mouse, rat	10
EXOSC2	14805-1-AP	Cell	30528433	Rabbit PAb	WB, IP, IHC, IF, ELISA	human, mouse, rat	1
EXOSC2	66099-1-Ig	Cell	30528433	Rabbit PAb	WB, IHC, IF, ELISA	human	1
FABP4	15872-1-AP	Cell	30415840	Rabbit PAb	WB, IHC, IF, ELISA	human, mouse, rat	4
FBXO22	13606-1-AP	Cell	31257023	Rabbit PAb	WB, IP, IHC, ELISA	human, mouse	8
FCGRT-Specific	16190-1-AP	Cell	31104841	Rabbit PAb	WB, IF, ELISA	dog, guinea pig, human	3
G3BP1	13057-2-AP	Nature	31292544	Rabbit PAb	WB, IP, IHC, IF, FC, ELISA	human, mouse, rat	40
HNRNPD	12770-1-AP	Cell	30449621	Rabbit PAb	WB, IHC, IF, ELISA	human, mouse, rat	5
HSD11B2	14192-1-AP	Nature	30918407	Rabbit PAb	WB, IHC, ELISA	human, mouse, rat	7
★ KEAP1	10503-2-AP	Cell	31257023	Rabbit PAb	WB, IP, IHC, IF, CoIP, ELISA	human, monkey, mouse, rat	153
KRT19	14965-1-AP	Nature	30918400	Rabbit PAb	WB, IHC, IF, ELISA	human, mouse	5
MFF	17090-1-AP	Cell	31150623	Rabbit PAb	WB, IP, IHC, IF, ELISA	human, monkey, mouse, rat, squirrels	53
MMS19	16015-1-AP	Cell	31031004	Rabbit PAb	WB, IF, ELISA	human, mouse, rat	9
MPI	14234-1-AP	Nature	30464341	Rabbit PAb	WB, IP, IF, ELISA	human, mouse, rat	1
NAT10	13365-1-AP	Cell	30449621	Rabbit PAb	WB, IP, IF, CoIP, ELISA	human, mouse, rat	9
NEIL3	11621-1-AP	Nature	30842657	Rabbit PAb	WB, IP, ELISA	human, mouse	3
★ P16-INK4A	10883-1-AP	Nature	30944469	Rabbit PAb	WB, IP, FC, CoIP, ELISA	human, monkey	92
★ P62;SQSTM1	18420-1-AP	Nature	30487606	Rabbit PAb	WB, IP, IHC, IF, FC, ELISA	bovine, chick, chicken, human, mouse, rabbit, rat, swine, zebrafish	258
PIK3IP1	16826-1-AP	Cell	30392958	Rabbit PAb	WB, IP, IF, ELISA	cow, human, mouse, rat	8
PROX1	11067-2-AP	Nature	31341278	Rabbit PAb	WB, IF, FC, ChIP, ELISA	human, mouse, rat	15
RPL10A	16681-1-AP	Cell	30612743	Rabbit PAb	WB, IP, IF, ELISA	xenopus, human, mouse, rat	2
RPL24	17082-1-AP	Cell	30612743	Rabbit PAb	WB, IP, IHC, IF, ELISA	xenopus, human, mouse, rat	2
RPS3A	14123-1-AP	Cell	30612743	Rabbit PAb	WB, IP, IHC, IF, FC, ELISA	human, mouse, xenopus, rat	4
★ SIX2	11562-1-AP	Nature	30894749	Rabbit PAb	WB, Pull-Down, IP, ChIP, ELISA	american alligator, human, mouse, pig, rat, swine	140
SQLE	12544-1-AP	Nature	30760928	Rabbit PAb	WB, IP, IHC, IF, ELISA	hamster, human, mouse, rat	16
Synaptophysin; SYP	17785-1-AP	Cell	30661759	Rabbit PAb	WB, IP, IHC, IF, ELISA	hamster, hamsters, human, mouse, rat	26
★ TDP-43	10782-2-AP	Nature	30464263	Rabbit PAb	WB, RIP, IP, Immunoelectron, IHC, IF, FC, CoIP, ChIP, ELISA	C. elegans, chicken, dog, drosophila, fly, hamster, horse, human, monkey, mouse, rat, zebrafish	965
TDP-43	12892-1-AP	Nature	30464263	Rabbit PAb	WB, IP, IHC, IF, ChIP, ELISA	human, monkey, mouse, zebrafish, rat	89
TLE3	11372-1-AP	Nature	31243372	Rabbit PAb	WB, IP, IHC, IF, Co-IP, CoIP, Ch-IP, ChIP, ELISA	human, mouse, rat	9
TMEM173	19851-1-AP	Science	31273097	Rabbit PAb	WB, IP, IHC, IF, FC, ELISA	human, mouse, rat	26
TRBP	15753-1-AP	Nature	30626973	Rabbit PAb	WB, IP, IHC, IF, ELISA	human, mouse, rat	6
TTC35	25443-1-AP	Cell	30415835	Rabbit PAb	WB, IP, ELISA	human, mouse, rat	2
UGDH	13151-1-AP	Nature	31243371	Rabbit PAb	WB, IHC, ELISA	human, mouse, rat	4
★ YAP1	13584-1-AP	Nature	30401838	Rabbit PAb	WB, IP, IHC, IF, FC, CoIP, ChIP, ELISA	chicken, human, mouse, zebrafish	41
YTHDC1	14392-1-AP	Nature	30401835	Rabbit PAb	WB, IF, CoIP, ELISA	human, mouse, rat	3
YTHDF1	17479-1-AP	Nature	31292544	Rabbit PAb	WB, IP, IHC, IF, ELISA	human, mouse, rat	22
YTHDF2	24744-1-AP	Nature	31292544	Rabbit PAb	WB, IP, IHC, IF, ELISA	human, mouse, rat, swine	28
YTHDF3	25537-1-AP	Nature	30401835	Rabbit PAb	WB, IF, ELISA	human, mouse	4

★: Proteintech 明星抗体

Proteintech 覆盖人类基因组靶标的抗体

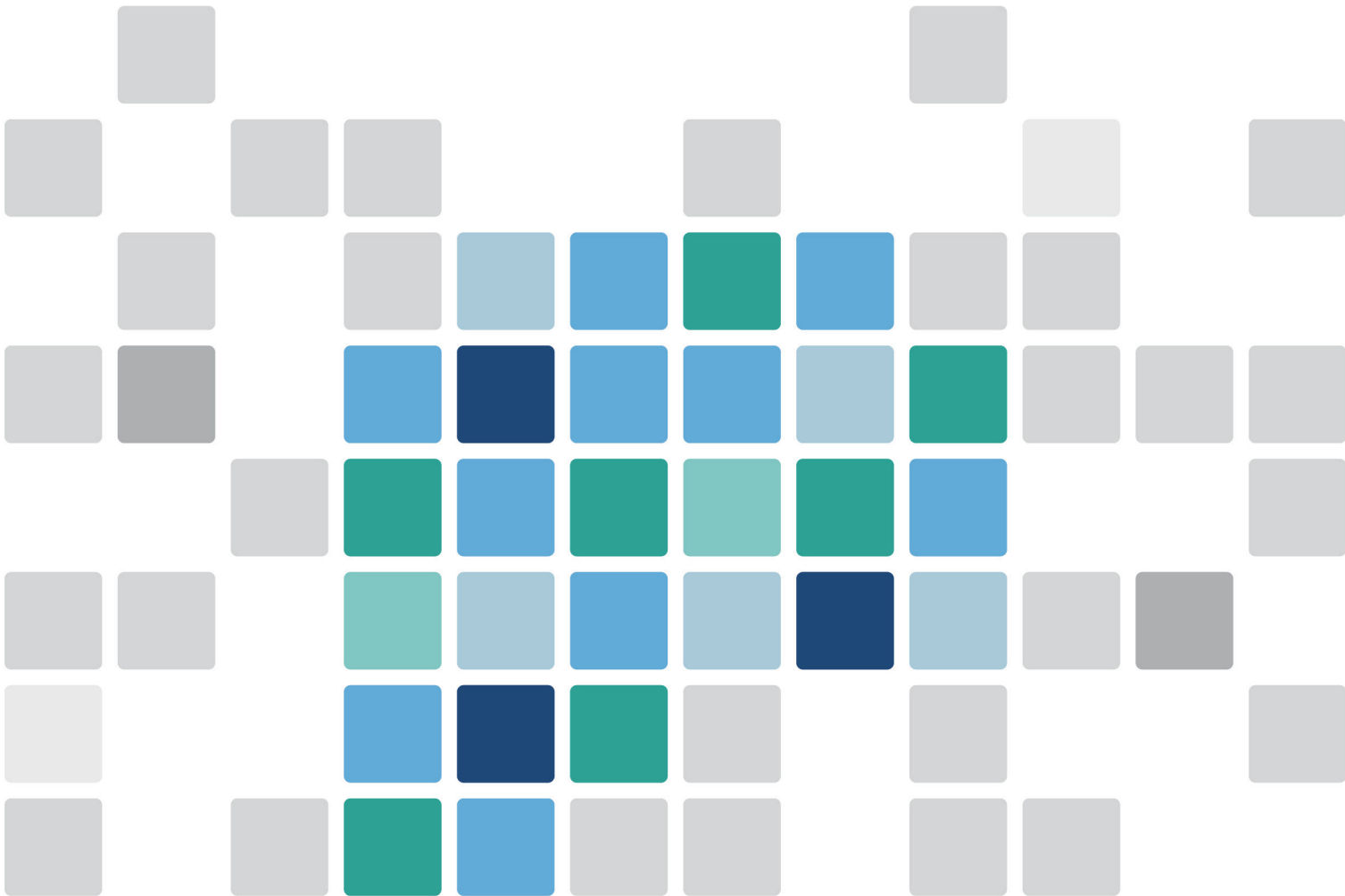
截止至 2019 年 9 月，已经拥有超过 5 万次的 SCI 文献引用

其中 60 次引用文献荣登顶尖期刊封面

560 余次被 Cell、Nature、Science 期刊文献引用



READING THE BOOK OF LIFE



WeChat Official Account

Proteintech Group, USA,
5400 Pearl Street, Suite 300,
Rosemont, IL 60018, USA
t. 1-888-478-4522
e. proteintech@ptglab.com

Proteintech Europe,
Manchester Science Park, Kilburn House,
Lloyd Street North, Manchester, M15 6SE
t. (+44)-161-22-66-144
e. europe@ptglab.com

San Ying Biotechnology, China,
D3-3, No.666 Gaoxin Avenue, Wuhan East Lake
Hi-tech Development Zone, Wuhan, P.R.C.
t. 86-27-87531629
e. Proteintech-CN@ptglab.com