

MATK Polyclonal antibody

Catalog Number: 10082-2-AP

1 Publications

Basic Information

Catalog Number:

10082-2-AP

Size:

167 µg/ml

Source:

Rabbit

Isotype:

IgG

Immunogen Catalog Number:

AG0128

GenBank Accession Number:

BC000114

GeneID (NCBI):

4145

UNIPROT ID:

P42679

Full Name:

megakaryocyte-associated tyrosine kinase

Calculated MW:

56 kDa

Observed MW:

56 kDa

Purification Method:

Antigen affinity purification

Recommended Dilutions:

WB 1:500-1:1000

IHC 1:20-1:200

IF 1:50-1:500

Applications

Tested Applications:

IF/ICC, IHC, WB, ELISA

Cited Applications:

WB

Species Specificity:

human, mouse

Positive Controls:

WB : K-562 cells, mouse thymus tissue

IHC : human breast cancer tissue,

IF : HepG2 cells,

Note-IHC: suggested antigen retrieval with *TE buffer pH 9.0*; (*) Alternatively, antigen retrieval may be performed with *citrate buffer pH 6.0*

Background Information

MATK(Megakaryocyte-associated tyrosine-protein kinase) is also named as CTK, HYL and belongs to the protein kinase superfamily. This protein can can inhibit the kinase activity of certain Src kinase family members by phosphorylating the C-terminal tyrosine and by a non-catalytic mechanism. It may play an inhibitory role in the control of T-cell proliferation. MATK has 3 isoforms produced by alternative splicing.

Notable Publications

Author	Pubmed ID	Journal	Application
Xiaokang Jia	33524783	Biomed Pharmacother	WB

Storage

Storage:

Store at -20°C. Stable for one year after shipment.

Storage Buffer:

PBS with 0.02% sodium azide and 50% glycerol pH 7.3.

Aliquoting is unnecessary for -20°C storage

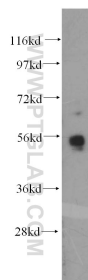
For technical support and original validation data for this product please contact:

T: 4006900926

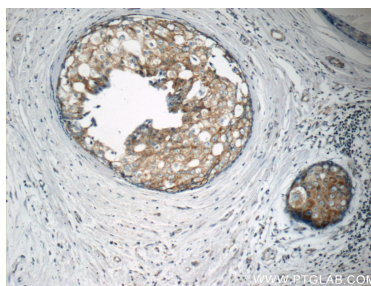
E: Proteintech-CN@ptglab.comW: ptgcn.com

This product is exclusively available under Proteintech Group brand and is not available to purchase from any other manufacturer.

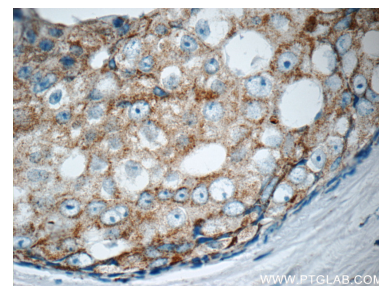
Selected Validation Data



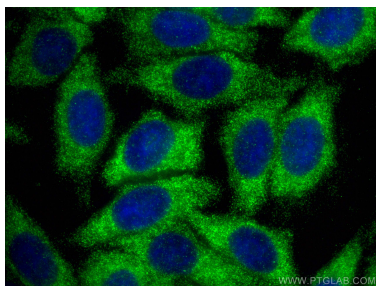
K-562 cells were subjected to SDS PAGE followed by western blot with 10082-2-AP (MATK antibody) at dilution of 1:400 incubated at room temperature for 1.5 hours.



Immunohistochemical analysis of paraffin-embedded human breast cancer tissue slide using 10082-2-AP (MATK Antibody) at dilution of 1:50 (under 10x lens).



Immunohistochemical analysis of paraffin-embedded human breast cancer tissue slide using 10082-2-AP (MATK Antibody) at dilution of 1:50 (under 40x lens).



Immunofluorescent analysis of (-20°C Ethanol) fixed HepG2 cells using MATK antibody (10082-2-AP) at dilution of 1:200 and CoraLite®488-Conjugated AffiniPure Goat Anti-Rabbit IgG(H+L).