

ARL2BP Polyclonal antibody

Catalog Number: 10090-2-AP

Featured Product

6 Publications

Basic Information

Catalog Number:

10090-2-AP

Size:

600 µg/ml

Source:

Rabbit

Isotype:

IgG

Immunogen Catalog Number:

AG0138

GenBank Accession Number:

BC003087

GeneID (NCBI):

23568

UNIPROT ID:

Q9Y2Y0

Full Name:

ADP-ribosylation factor-like 2 binding protein

Calculated MW:

19 kDa

Observed MW:

21 kDa

Purification Method:

Antigen affinity purification

Recommended Dilutions:

WB 1:200-1:1000

IHC 1:20-1:200

Applications

Tested Applications:

IHC, WB, ELISA

Cited Applications:

IF, IP, WB

Species Specificity:

human, mouse, rat

Cited Species:

human, mouse

Note-IHC: suggested antigen retrieval with TE buffer pH 9.0; (*) Alternatively, antigen retrieval may be performed with citrate buffer pH 6.0

Positive Controls:

WB : A549 cells,

IHC : human gliomas tissue,

Background Information

ARF-like proteins (ARLs) belong to a group of incompletely characterized members in the ARF family of RAS-related GTPases. A 19-kDa protein (BART, Binder of Arl Two) was identified to bind specifically to ARL2.GDP with high affinity but not with ARL2.GDP. In human, the 489-base pair BART open reading frame encodes a novel 163-amino acid protein with a predicted molecular mass of 18,822 Da. Data from Northern and Western analyses indicated BART is expressed in many tissues.

Notable Publications

Author	Pubmed ID	Journal	Application
Taniuchi Keisuke K	21833473	Int J Oncol	WB, IF, IP
Davidson Alice E AE	23849777	Am J Hum Genet	WB, IF
Keisuke Taniuchi	21266361	Cancer Res	WB

Storage

Storage:

Store at -20°C. Stable for one year after shipment.

Storage Buffer:

PBS with 0.02% sodium azide and 50% glycerol pH 7.3.

Aliquoting is unnecessary for -20°C storage

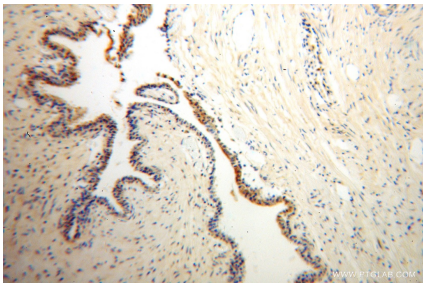
For technical support and original validation data for this product please contact:

T: 4006900926

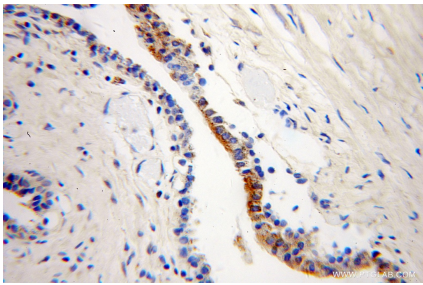
E: Proteintech-CN@ptglab.comW: ptgcn.com

This product is exclusively available under Proteintech Group brand and is not available to purchase from any other manufacturer.

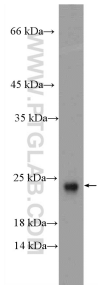
Selected Validation Data



Immunohistochemical analysis of paraffin-embedded human gliomas using 10090-2-AP (ARL2BP antibody) at dilution of 1:50 (under 10x lens).



Immunohistochemical analysis of paraffin-embedded human gliomas using 10090-2-AP (ARL2BP antibody) at dilution of 1:50 (under 40x lens).



A549 cells were subjected to SDS PAGE followed by western blot with 10090-2-AP (ARL2BP Antibody) at dilution of 1:300 incubated at room temperature for 1.5 hours.