

For Research Use Only

# Cytokeratin 15 Polyclonal antibody

Catalog Number: 10137-1-AP

16 Publications



## Basic Information

**Catalog Number:**

10137-1-AP

**Size:**

750 µg/ml

**Source:**

Rabbit

**Isotype:**

IgG

**Immunogen Catalog Number:**

AG0185

**GenBank Accession Number:**

BC002641

**GeneID (NCBI):**

3866

**UNIPROT ID:**

P19012

**Full Name:**

keratin 15

**Calculated MW:**

49 kDa

**Observed MW:**

49 kDa

**Purification Method:**

Antigen affinity purification

**Recommended Dilutions:**

WB 1:2000-1:10000

IP 0.5-4.0 µg for 1.0-3.0 mg of total protein lysate

IHC 1:400-1:1600

## Applications

**Tested Applications:**

FC, IHC, IP, WB, ELISA

**Cited Applications:**

IF, IHC, WB

**Species Specificity:**

human

**Cited Species:**

human, rat, mouse

**Note-IHC: suggested antigen retrieval with TE buffer pH 9.0; (\*) Alternatively, antigen retrieval may be performed with citrate buffer pH 6.0**

**Positive Controls:**

**WB:** A431 cells, mouse thymus tissue, HeLa cells, PC-3 cells

**IP:** A431 cells,

**IHC:** human cervical cancer tissue, human oesophagus cancer tissue, human breast cancer tissue

## Background Information

Keratins are a large family of proteins that form the intermediate filament cytoskeleton of epithelial cells, which are classified into two major sequence types. Type I keratins are a group of acidic intermediate filament proteins, including K9-K23, and the hair keratins Ha1-Ha8. Type II keratins are the basic or neutral counterparts to the acidic type I keratins, including K1-K8, and the hair keratins, Hb1-Hb6. Keratin 15 is a type I cytokeratin. It is found in some progenitor basal cells within complex epithelia.

## Notable Publications

Author	Pubmed ID	Journal	Application
Zhang W W	18958303	Mol Vis	IHC
Ximeng Kang	36073016	Biomater Sci	IHC
Shaoheng Xiong	35685420	Front Med (Lausanne)	WB,IF

## Storage

**Storage:**

Store at -20°C. Stable for one year after shipment.

**Storage Buffer:**

PBS with 0.02% sodium azide and 50% glycerol pH 7.3.

Aliquoting is unnecessary for -20°C storage

For technical support and original validation data for this product please contact:

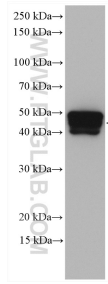
T: 4006900926

E: Proteintech-CN@ptglab.com

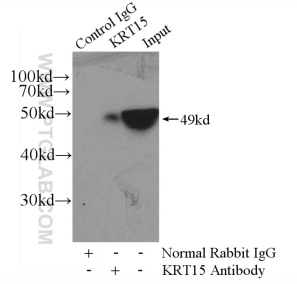
W: ptgcn.com

**This product is exclusively available under Proteintech Group brand and is not available to purchase from any other manufacturer.**

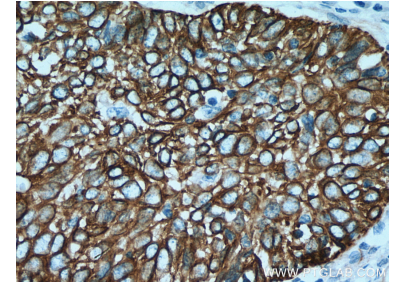
## Selected Validation Data



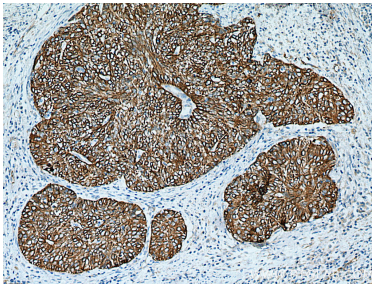
A431 cells were subjected to SDS PAGE followed by western blot with 10137-1-AP (Cytokeratin 15 antibody) at dilution of 1:5000 incubated at room temperature for 1.5 hours.



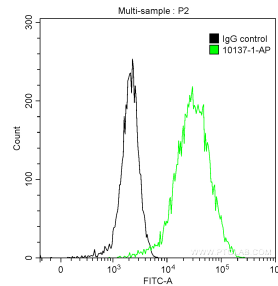
IP result of anti-Cytokeratin 15 (IP:10137-1-AP, 4ug; Detection:10137-1-AP 1:500) with A431 cells lysate 3040ug.



Immunohistochemical analysis of paraffin-embedded human cervical cancer tissue slide using 10137-1-AP (Cytokeratin 15 antibody) at dilution of 1:800 (under 40x lens). Heat mediated antigen retrieval with Tris-EDTA buffer (pH 9.0).



Immunohistochemical analysis of paraffin-embedded human cervical cancer tissue slide using 10137-1-AP (Cytokeratin 15 antibody) at dilution of 1:800 (under 10x lens). Heat mediated antigen retrieval with Tris-EDTA buffer (pH 9.0).



$1 \times 10^6$  A431 cells were intracellularly stained with 0.2 ug Anti-Human Cytokeratin 15 (10137-1-AP) and CoraLite® 488-Conjugated AffiniPure Goat Anti-Rabbit IgG(H+L) at dilution 1:1000 (green), and 0.2 ug Control Antibody. Cells were fixed with 90% MeOH.