

PPP1CB-Specific Polyclonal antibody

Catalog Number: 10140-2-AP

3 Publications

Basic Information

Catalog Number:

10140-2-AP

Size:

750 µg/ml

Source:

Rabbit

Isotype:

IgG

Immunogen Catalog Number:

AG0183

GenBank Accession Number:

BC002697

GeneID (NCBI):

5500

UNIPROT ID:

P62140

Full Name:

protein phosphatase 1, catalytic subunit, beta isoform

Calculated MW:

37 kDa

Observed MW:

37 kDa

Purification Method:

Antigen affinity purification

Recommended Dilutions:

WB 1:500-1:2000

IP 0.5-4.0 µg for 1.0-3.0 mg of total protein lysate

IHC 1:20-1:200

IF 1:20-1:200

Applications

Tested Applications:

IF/ICC, IHC, IP, WB, ELISA

Cited Applications:

IHC, IP, WB

Species Specificity:

human, mouse, rat

Cited Species:

human, rat

Note-IHC: suggested antigen retrieval with TE buffer pH 9.0; (*) Alternatively, antigen retrieval may be performed with citrate buffer pH 6.0

Positive Controls:

WB : human brain tissue, NIH/3T3

IP : mouse brain tissue,

IHC : human prostate cancer tissue,

IF : NIH/3T3 cells,

Background Information

Protein phosphatase 1 (PP1) is the main eukaryotic protein serine/threonine phosphatase that regulates an enormous variety of cellular processes including protein-protein interactions, gene transcription, cell-cycle progression and apoptosis. It is a trimeric complex composed of a regulatory subunit, a variable subunit and a catalytic subunit. The catalytic subunit of PP1 (PP1c) can interact with amount of regulatory subunits in vivo that target it to particular subcellular locations and regulate its activity towards specific substrates. PPP1CB migrated as a 37kd protein on SDS page. This antibody is specific to PPP1CB.

Notable Publications

Author	Pubmed ID	Journal	Application
Ru-Jia Liao	25224648	Clin Exp Pharmacol Physiol	WB, IP
Chao Huang	24196533	Am J Physiol Cell Physiol	WB
Sun Daxin D	21566537	Melanoma Res	WB, IHC

Storage

Storage:

Store at -20°C. Stable for one year after shipment.

Storage Buffer:

PBS with 0.02% sodium azide and 50% glycerol pH 7.3.

Aliquoting is unnecessary for -20°C storage

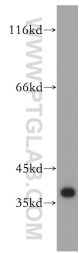
For technical support and original validation data for this product please contact:

T: 4006900926

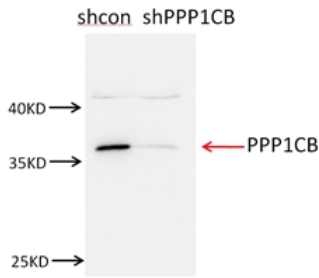
E: Proteintech-CN@ptglab.comW: ptgcn.com

This product is exclusively available under Proteintech Group brand and is not available to purchase from any other manufacturer.

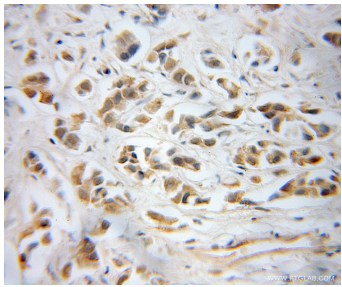
Selected Validation Data



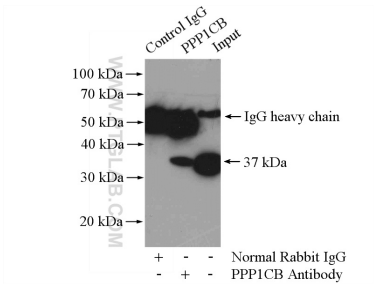
human brain tissue were subjected to SDS PAGE followed by western blot with 10140-2-AP (PPP1CB-Specific antibody) at dilution of 1:1500 incubated at room temperature for 1.5 hours.



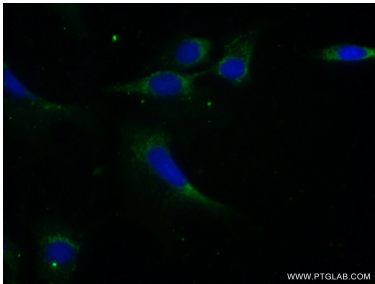
NIH3T3 cells were subjected to SDS PAGE followed by western blot with 10140-2-AP (PPP1CB-Specific antibody) at dilution of 1:1500.



Immunohistochemical analysis of paraffin-embedded human prostate cancer using 10140-2-AP (PPP1CB-Specific antibody) at dilution of 1:50 (under 40x lens).



IP result of anti-PPP1CB-Specific (IP:10140-2-AP, 4ug; Detection:10140-2-AP 1:1000) with mouse brain tissue lysate 4000ug.



Immunofluorescent analysis of (-20℃ Ethanol) fixed NIH/3T3 cells using 10140-2-AP (PPP1CB-Specific antibody) at dilution of 1:50 and Alexa Fluor 488-conjugated AffiniPure Goat Anti-Rabbit IgG(H+L).