

EFTUD2 Polyclonal antibody

Catalog Number: 10208-1-AP

Featured Product

14 Publications

Basic Information

Catalog Number:

10208-1-AP

Size:

300 µg/ml

Source:

Rabbit

Isotype:

IgG

Immunogen Catalog Number:

AG0279

GenBank Accession Number:

BC002360

GeneID (NCBI):

9343

UNIPROT ID:

Q15029

Full Name:

elongation factor Tu GTP binding domain containing 2

Calculated MW:

116 kDa

Observed MW:

116 kDa

Purification Method:

Antigen affinity purification

Recommended Dilutions:

WB 1:500-1:2000

IP 0.5-4.0 µg for 1.0-3.0 mg of total protein lysate

IF 1:10-1:100

Applications

Tested Applications:

IF/ICC, IP, WB, ELISA

Cited Applications:

CoIP, IF, IHC, IP, PLA, WB

Species Specificity:

human

Cited Species:

human, mouse

Positive Controls:

WB : HeLa cells,

IP : HeLa cells,

IF : HepG2 cells,

Background Information

EFTUD2 encodes the 116 kDa U5 small nuclear ribonucleoprotein (snRNP) component, also named SNU114, it has GTP binding activity and is required for pre-mRNA splicing. Evolutionarily conserved human snRNP protein (U5-116kDa) is homologous to the ribosomal elongation factor EF-2 (ribosomal translocase). Defects in EFTUD2 are the cause of mandibulofacial dysostosis with microcephaly (MFDM). So far, acetylation and phosphorylation sites of EFTUD2 have been identified. Catalog#10208-1-AP is a rabbit polyclonal antibody raised against the N-terminal of human EFTUD2.

Notable Publications

Author	Pubmed ID	Journal	Application
Zhe Chen	28878014	J Biol Chem	WB, IP
Nam-Kyung Yu	34816099	iScience	PLA, CoIP
Moon Kyoo Jang	25758368	Proteomics	WB

Storage

Storage:

Store at -20°C. Stable for one year after shipment.

Storage Buffer:

PBS with 0.02% sodium azide and 50% glycerol pH 7.3.

Aliquoting is unnecessary for -20°C storage

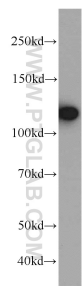
For technical support and original validation data for this product please contact:

T: 4006900926

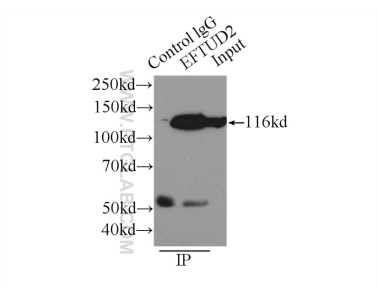
E: Proteintech-CN@ptglab.comW: ptgcn.com

This product is exclusively available under Proteintech Group brand and is not available to purchase from any other manufacturer.

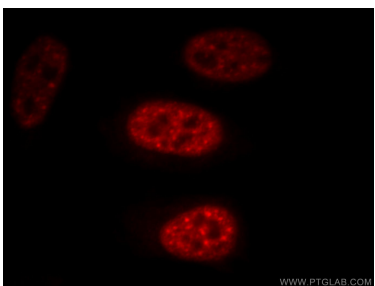
Selected Validation Data



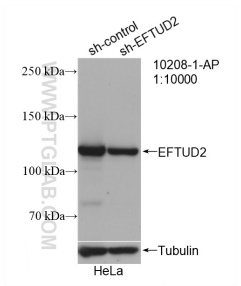
HeLa cells were subjected to SDS PAGE followed by western blot with 10208-1-AP (EFTUD2 antibody) at dilution of 1:1000 incubated at room temperature for 1.5 hours.



IP result of anti-EFTUD2 (IP:10208-1-AP, 3ug; Detection:10208-1-AP 1:1000) with HeLa cells lysate 4650ug.



Immunofluorescent analysis of HepG2 cells, using EFTUD2 antibody 10208-1-AP at 1:25 dilution and Rhodamine-labeled goat anti-rabbit IgG (red).



WB result of EFTUD2 antibody (10208-1-AP; 1:10000; incubated at room temperature for 1.5 hours) with sh-Control and sh-EFTUD2 transfected HeLa cells.