

# PDLIM7 Polyclonal antibody

Catalog Number: 10221-1-AP

Featured Product

13 Publications

## Basic Information

## Catalog Number:

10221-1-AP

## Size:

800 µg/ml

## Source:

Rabbit

## Isotype:

IgG

## Immunogen Catalog Number:

AG0264

## GenBank Accession Number:

BC001093

## GeneID (NCBI):

9260

## UNIPROT ID:

Q9NR12

## Full Name:

PDZ and LIM domain 7 (enigma)

## Calculated MW:

55/60 kDa

## Observed MW:

55 kDa

## Purification Method:

Antigen affinity purification

## Recommended Dilutions:

WB 1:1000-1:4000

IP 0.5-4.0 µg for 1.0-3.0 mg of total protein lysate

IHC 1:20-1:200

IF 1:50-1:500

## Applications

## Tested Applications:

WB, IP, IF/ICC, IHC, ELISA

## Cited Applications:

WB, IP, IF, IHC

## Species Specificity:

human

## Cited Species:

human, mouse

**Note-IHC: suggested antigen retrieval with TE buffer pH 9.0; (\*) Alternatively, antigen retrieval may be performed with citrate buffer pH 6.0**

## Positive Controls:

WB : SKOV-3 cells, HeLa cells, MCF-7 cells

IP : MCF-7 cells,

IHC : human ovary tumor tissue,

IF : SKOV-3 cells,

## Background Information

PDLIM7 (PDZ and LIM domain protein 7), also known as ENIGMA or LIM mineralization protein 1 (LMP-1), is a member of PDZ-LIM proteins which function as scaffold to interact with multiple proteins through N-terminal PDZ domain and C-terminal LIM domain. Its LIM domains bind to proteins involved in mitogenic signaling, and it plays a role in tumorigenesis by promoting cancer cell invasion and metastasis. In addition, PDLIM7 is an essential positive regulator of osteoblast differentiation and maturation and bone formation.

## Notable Publications

Author	Pubmed ID	Journal	Application
Michael D Healy	36302387	Structure	WB
Hui Liu	25336289	J Orthop Res	WB
Aron Gyuris	31242427	Cell Rep	WB

## Storage

## Storage:

Store at -20°C. Stable for one year after shipment.

## Storage Buffer:

PBS with 0.02% sodium azide and 50% glycerol pH 7.3.

Aliquoting is unnecessary for -20°C storage

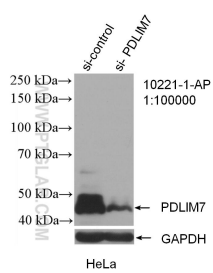
For technical support and original validation data for this product please contact:

T: 4006900926

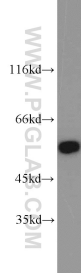
E: [Proteintech-CN@ptglab.com](mailto:Proteintech-CN@ptglab.com)W: [ptgcn.com](http://ptgcn.com)

**This product is exclusively available under Proteintech Group brand and is not available to purchase from any other manufacturer.**

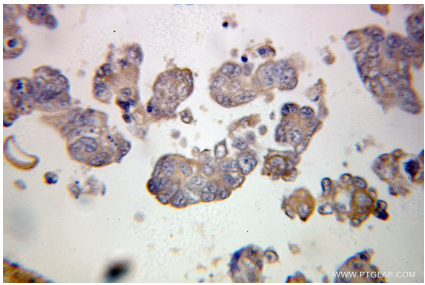
Selected Validation Data



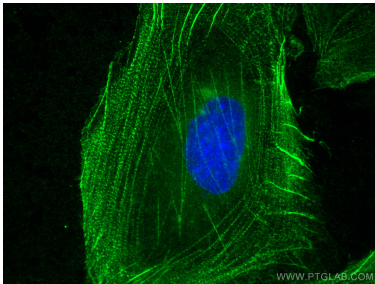
WB result of PDLIM7 antibody (10221-1-AP; 1:100000; incubated at room temperature for 1.5 hours) with sh-Control and sh-PDLIM7 transfected HeLa cells.



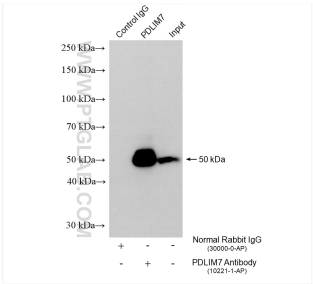
SKOV-3 cells were subjected to SDS PAGE followed by western blot with 10221-1-AP (PDLIM7 antibody) at dilution of 1:2000 incubated at room temperature for 1.5 hours.



Immunohistochemical analysis of paraffin-embedded human ovary tumor using 10221-1-AP (PDLIM7 antibody) at dilution of 1:100 (under 25x lens).



Immunofluorescent analysis of (-20°C Ethanol) fixed SKOV-3 cells using PDLIM7 antibody (10221-1-AP) at dilution of 1:200 and CoraLite®488-Conjugated AffiniPure Goat Anti-Rabbit IgG(H+L).



IP result of anti-PDLIM7 (IP:10221-1-AP, 4ug; Detection:10221-1-AP 1:20000) with MCF-7 cells lysate 1000 ug.