

For Research Use Only

TAU Polyclonal antibody

Catalog Number: 10274-1-AP

50 Publications



Basic Information

Catalog Number:

10274-1-AP

Concentration:

750 ug/ml

Source:

Rabbit

Isotype:

IgG

Immunogen Catalog Number:

AG0354

GenBank Accession Number:

BC000558

GeneID (NCBI):

4137

UNIPROT ID:

P10636

Full Name:

microtubule-associated protein tau

Calculated MW:

37-46, 79-81 kDa

Observed MW:

45-70 kDa, 100 kDa

Purification Method:

Antigen affinity purification

Recommended Dilutions:

WB: 1:2000-1:12000

IHC: 1:20-1:200

IF-P: 1:50-1:500

IF-Fro: 1:50-1:500

Applications

Tested Applications:

WB, IHC, IF-P, IF-Fro, ELISA

Cited Applications:

WB, IHC, IF

Species Specificity:

human, mouse, rat

Cited Species:

human, mouse, rat, goat

Note-IHC: suggested antigen retrieval with TE buffer pH 9.0; (*) Alternatively, antigen retrieval may be performed with citrate buffer pH 6.0

Positive Controls:

WB : mouse brain tissue, rat brain

IHC : human brain tissue, human gliomas tissue

IF-P : mouse brain tissue,

IF-Fro : mouse brain tissue,

Background Information

Tau (tubulin-associated unit) is a microtubule-associated protein (also known as MAPT), expressed mainly in neurons of the central nervous system. Its primary function is to modulate microtubule dynamics for maintaining axonal cytoskeleton. Various isoforms of Tau exist due to the alternative splicing, and short isoforms around 45-69 kDa and long isoforms around 100-110 kDa have been reported in different literature (8752131,15965697). Present polyclonal anti-Tau antibody was produced by immunizing animals with N-terminal of Tau and can detect approx 45-70 kDa and 100-kDa bands in brain tissues.

Notable Publications

Author	Pubmed ID	Journal	Application
Fayi Nie	33113163	J Neurochem	WB
Shenya Xu	33183805	Sci Total Environ	WB, IHC
Jie Ai	33131696	Free Radic Biol Med	WB

Storage

Storage:

Store at -20°C. Stable for one year after shipment.

Storage Buffer:

PBS with 0.02% sodium azide and 50% glycerol, pH7.3

Aliquoting is unnecessary for -20°C storage

For technical support and original validation data for this product please contact:

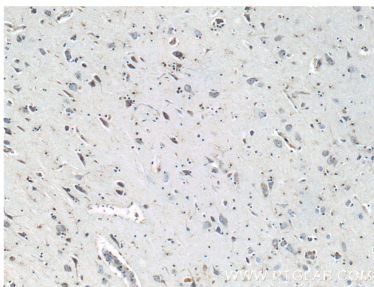
T: 4006900926

E: Proteintech-CN@ptglab.com

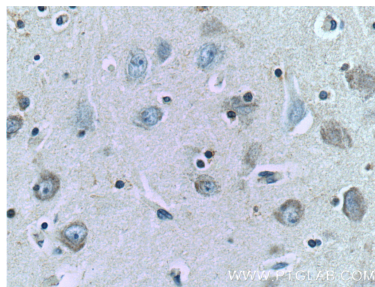
W: ptgcn.com

This product is exclusively available under Proteintech Group brand and is not available to purchase from any other manufacturer.

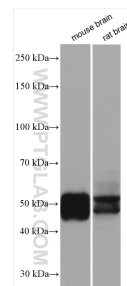
Selected Validation Data



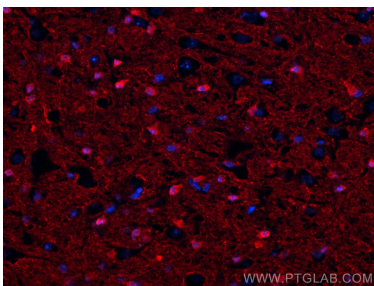
Immunohistochemical analysis of paraffin-embedded human brain tissue slide using 10274-1-AP (TAU Antibody) at dilution of 1:200 (under 10x lens).



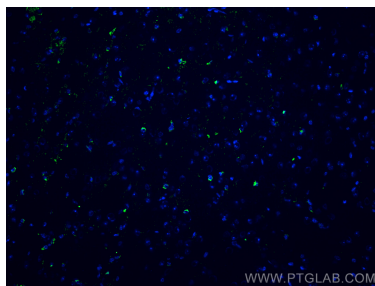
Immunohistochemical analysis of paraffin-embedded human brain tissue slide using 10274-1-AP (TAU Antibody) at dilution of 1:200 (under 40x lens).



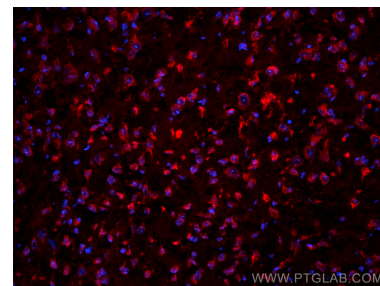
mouse brain tissue were subjected to SDS PAGE followed by western blot with 10274-1-AP (TAU antibody) at dilution of 1:6000 incubated at room temperature for 1.5 hours.



Immunofluorescent analysis of (4% PFA) fixed paraffin-embedded mouse brain tissue using TAU antibody (10274-1-AP) at dilution of 1:200 and CoraLite® 594-Conjugated Goat Anti-Rabbit IgG(H+L) (SA00013-4). Heat mediated antigen retrieval with Tris-EDTA buffer (pH 9.0).



Immunofluorescent analysis of (4% PFA) fixed frozen OCT-embedded mouse brain tissue using TAU antibody (10274-1-AP) at dilution of 1:400 and CoraLite® 488-Conjugated AffiniPure Goat Anti-Rabbit IgG(H+L) (SA00013-2).



Immunofluorescent analysis of (4% PFA) fixed frozen OCT-embedded mouse brain tissue using TAU antibody (10274-1-AP) at dilution of 1:200 and CoraLite® 594-Conjugated AffiniPure Goat Anti-Rabbit IgG(H+L) (SA00013-4).