

## COMMD5 Polyclonal antibody

Catalog Number: 10393-1-AP

Featured Product

9 Publications

## Basic Information

## Catalog Number:

10393-1-AP

## Size:

700 µg/ml

## Source:

Rabbit

## Isotype:

IgG

## Immunogen Catalog Number:

AG0592

## GenBank Accession Number:

BC003055

## GeneID (NCBI):

28991

## UNIPROT ID:

Q9GZQ3

## Full Name:

COMM domain containing 5

## Calculated MW:

25 kDa

## Observed MW:

25 kDa

## Purification Method:

Antigen affinity purification

## Recommended Dilutions:

WB 1:500-1:2000

IP 0.5-4.0 µg for 1.0-3.0 mg of total protein lysate

IF 1:50-1:500

## Applications

## Tested Applications:

IF/ICC, IP, WB, ELISA

## Cited Applications:

WB, IF, IHC, CoIP

## Species Specificity:

human, mouse

## Cited Species:

human, mouse

## Positive Controls:

WB : mouse kidney tissue, human heart tissue, human stomach tissue, mouse stomach tissue, mouse heart tissue, HEK-293 cells, MCF-7 cells, human placenta tissue

IP : mouse heart tissue,

IF : HeLa cells,

## Background Information

COMM domain containing 5 (COMMD5, synonyms: HCARG, HT002) is a hypertension-related calcium-regulated gene. COMMD5 is negatively regulated by extracellular calcium concentration, and its basal mRNA levels were higher in hypertensive animals. Tissue distribution of COMMD5 shows a preponderance in the heart, stomach, jejunum, kidney (tubular fraction), liver, and adrenal gland (mainly in the medulla). COMMD5 mRNA is significantly more expressed in adult than in fetal organs, and its levels are decreased in tumors and cancerous cell lines. COMMD5 protein has no transmembrane domain, but contains 67%  $\alpha$ -helix content, a calcium-binding site, four putative "leucine zipper" motifs, and a nuclear receptor-binding domain. At the subcellular level, COMMD5 shows a nuclear localization.

## Notable Publications

Author	Pubmed ID	Journal	Application
Hiroyuki Matsuda	21921141	J Am Soc Nephrol	IHC
Chen Bai-Li BL	18949406	Oncol Rep	IHC
Hiroyuki Matsuda	29050225	Oncotarget	IHC

## Storage

## Storage:

Store at -20°C. Stable for one year after shipment.

## Storage Buffer:

PBS with 0.02% sodium azide and 50% glycerol pH 7.3.

Aliquoting is unnecessary for -20°C storage

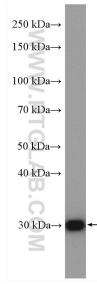
For technical support and original validation data for this product please contact:

T: 4006900926

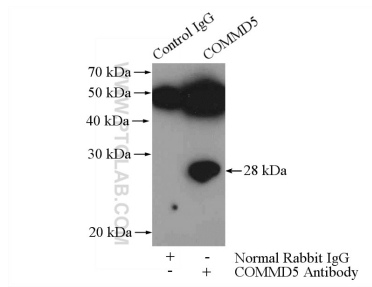
E: [Proteintech-CN@ptglab.com](mailto:Proteintech-CN@ptglab.com)W: [ptgcn.com](http://ptgcn.com)

This product is exclusively available under Proteintech Group brand and is not available to purchase from any other manufacturer.

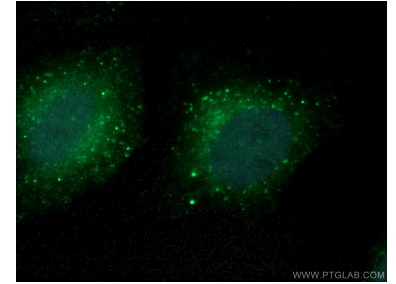
## Selected Validation Data



mouse kidney tissue were subjected to SDS PAGE followed by western blot with 10393-1-AP (COMMD5 antibody) at dilution of 1:1000 incubated at room temperature for 1.5 hours.



IP result of anti-COMMD5 (IP:10393-1-AP, 4ug; Detection:10393-1-AP 1:500) with mouse heart tissue lysate 3200ug.



Immunofluorescent analysis of (4% PFA) fixed HeLa cells using 10393-1-AP (COMMD5 antibody) at dilution of 1:50 and Alexa Fluor 488-Conjugated AffiniPure Goat Anti-Rabbit IgG(H+L).