

For Research Use Only

Calnexin Polyclonal antibody

Catalog Number: 10427-2-AP

Featured Product

326 Publications



Basic Information

Catalog Number:

10427-2-AP

Size:

550 µg/ml

Source:

Rabbit

Isotype:

IgG

Immunogen Catalog Number:

AG0697

GenBank Accession Number:

BC003552

GeneID (NCBI):

821

UNIPROT ID:

P27824

Full Name:

calnexin

Calculated MW:

90 kDa

Observed MW:

90 kDa

Purification Method:

Antigen affinity purification

Recommended Dilutions:

WB 1:5000-1:50000

IHC 1:50-1:500

IF 1:50-1:500

Applications

Tested Applications:

FC, IF/ICC, IHC, WB, ELISA

Cited Applications:

WB, IF, IHC, CoIP, ELISA

Species Specificity:

human, mouse, rat

Cited Species:

human, goat, rat, mouse, monkey, Hamster, pig

Note-IHC: suggested antigen retrieval with TE buffer pH 9.0; (*) Alternatively, antigen retrieval may be performed with citrate buffer pH 6.0

Positive Controls:

WB: HEK-293 cells, HepG2 cells, HeLa cells, K-562 cells, MCF-7 cells, NIH/3T3 cells, U2OS cells, RAW 264.7 cells

IHC: human breast cancer tissue, human cervical cancer tissue

IF: HepG2 cells, SKOV-3 cells

Background Information

Calnexin is a molecular chaperone that resides in the endoplasmic reticulum (ER) and participates in the folding and assembly of newly synthesized proteins. Calnexin is highly abundant in ER and is frequently used as an ER marker.

Notable Publications

Author	Pubmed ID	Journal	Application
Xuedan Li	32999434	Sci Rep	WB
Chih-Hang Anthony Tang	32999453	Cell Mol Immunol	WB
Meghan E Spears	36170811	Cell Rep	WB,IF

Storage

Storage:

Store at -20°C. Stable for one year after shipment.

Storage Buffer:

PBS with 0.02% sodium azide and 50% glycerol pH 7.3.

Aliquoting is unnecessary for -20°C storage

For technical support and original validation data for this product please contact:

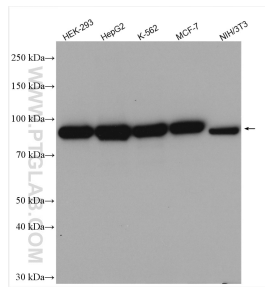
T: 4006900926

E: Proteintech-CN@ptglab.com

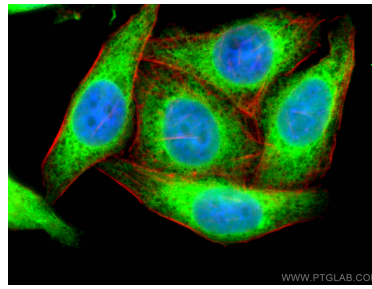
W: ptgcn.com

This product is exclusively available under Proteintech Group brand and is not available to purchase from any other manufacturer.

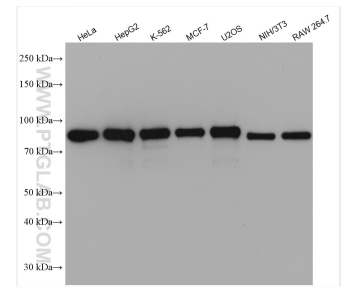
Selected Validation Data



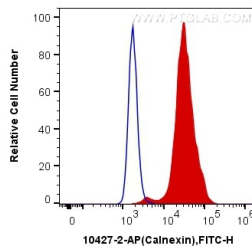
Various lysates were subjected to SDS PAGE followed by western blot with 10427-2-AP (Calnexin antibody) at dilution of 1:20000 incubated at room temperature for 1.5 hours.



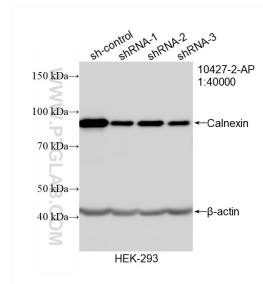
Immunofluorescent analysis of (10% Formaldehyde) fixed HepG2 cells using Calnexin antibody (10427-2-AP) at dilution of 1:200 and CoraLite®488-Conjugated AffiniPure Goat Anti-Rabbit IgG(H+L). The cytoskeleton was stained with CL594-Phalloidin (red).



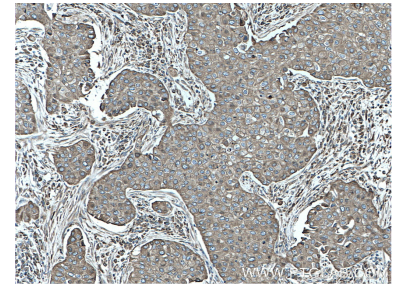
Various lysates were subjected to SDS PAGE followed by western blot with 10427-2-AP (Calnexin antibody) at dilution of 1:10000 incubated at room temperature for 1.5 hours.



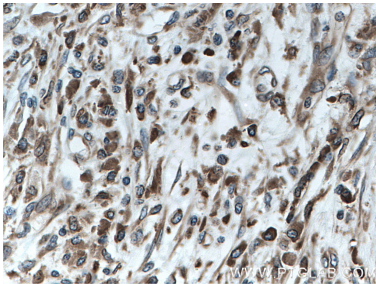
1X10⁶ HeLa cells were intracellularly stained with 0.2 ug Anti-Human Calnexin (10427-2-AP) and CoraLite®488-Conjugated AffiniPure Goat Anti-Rabbit IgG(H+L) at dilution 1:1000 (red), or 0.2 ug Control Antibody. Cells were fixed with 4% PFA and permeabilized with Flow Cytometry Perm Buffer (PF00011-C).



WB result of Calnexin antibody (10427-2-AP; 1:40000; incubated at room temperature for 1.5 hours) with sh-Control and sh-Calnexin transfected HEK-293 cells.



Immunohistochemical analysis of paraffin-embedded human breast cancer tissue slide using 10427-2-AP (Calnexin antibody) at dilution of 1:200 (under 10x lens). Heat mediated antigen retrieval with Tris-EDTA buffer (pH 9.0).



Immunohistochemical analysis of paraffin-embedded human breast cancer tissue slide using 10427-2-AP (Calnexin antibody) at dilution of 1:200 (under 10x lens). Heat mediated antigen retrieval with Tris-EDTA buffer (pH 9.0).