

For Research Use Only

# Connexin-32 Polyclonal antibody

Catalog Number: 10450-1-AP **7 Publications**



## Basic Information

<b>Catalog Number:</b> 10450-1-AP	<b>GenBank Accession Number:</b> BC002805	<b>Purification Method:</b> Antigen affinity purification
<b>Size:</b> 133 µg/ml	<b>GeneID (NCBI):</b> 2705	<b>Recommended Dilutions:</b> WB 1:200-1:1000
<b>Source:</b> Rabbit	<b>UNIPROT ID:</b> P08034	IP 0.5-4.0 ug for 1.0-3.0 mg of total protein lysate
<b>Isotype:</b> IgG	<b>Full Name:</b> gap junction protein, beta 1, 32kDa	IHC 1:20-1:200
<b>Immunogen Catalog Number:</b> AG0659	<b>Calculated MW:</b> 32 kDa	
	<b>Observed MW:</b> 32 kDa	

## Applications

<b>Tested Applications:</b> IHC, IP, WB, ELISA	<b>Positive Controls:</b> WB : mouse brain tissue, A375 cells, human liver tissue, mouse skin tissue
<b>Cited Applications:</b> IF, IHC, WB	IP : mouse brain tissue,
<b>Species Specificity:</b> human, mouse	IHC : human colon cancer tissue,
<b>Cited Species:</b> human, mouse	

**Note-IHC: suggested antigen retrieval with TE buffer pH 9.0; (\*) Alternatively, antigen retrieval may be performed with citrate buffer pH 6.0**

## Background Information

Connexin-32 (Cx32), also known as Gap junction beta 1 protein (GJB1), belongs to the connexin family. Connexins are membrane-spanning proteins that assemble to form gap junction channels that facilitate the transfer of ions and small molecules between cells. Connexin-32 is the major gap junction protein of liver, and the expression is also found in brain and other organs. It is involved in tumorigenesis and liver regeneration. Connexin-32 plays an important role in peripheral nerve. Defects in Connexin-32 are the cause of Charcot-Marie-Tooth disease X-linked type 1 (CMTX1), an inherited peripheral neuropathy. (PMID: 8266101; 8613761; 8608591; 19265674)

## Notable Publications

Author	Pubmed ID	Journal	Application
Nakase Taizen T	19794823	J Biomed Biotechnol	IHC
Wen-Qun Zhong	25270527	Histopathology	IHC, IF
Yi Sha S	23162640	Oncol Lett	WB

## Storage

**Storage:**  
Store at -20°C. Stable for one year after shipment.

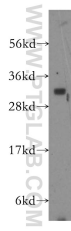
**Storage Buffer:**  
PBS with 0.02% sodium azide and 50% glycerol pH 7.3.

Aliquoting is unnecessary for -20°C storage

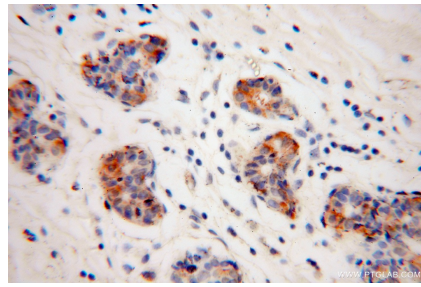
For technical support and original validation data for this product please contact:  
T: 4006900926 E: Proteintech-CN@ptglab.com W: ptgcn.com

This product is exclusively available under Proteintech Group brand and is not available to purchase from any other manufacturer.

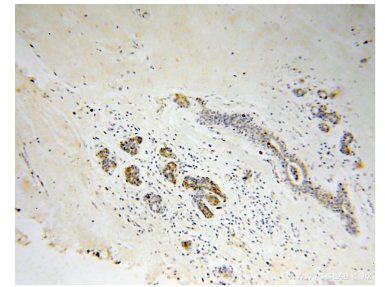
## Selected Validation Data



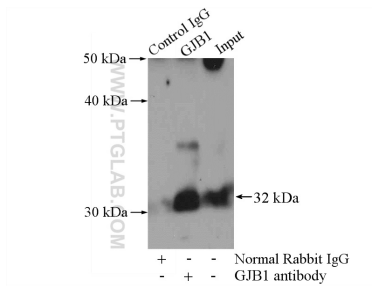
mouse brain tissue were subjected to SDS PAGE followed by western blot with 10450-1-AP (GJB1 antibody) at dilution of 1:300 incubated at room temperature for 1.5 hours.



Immunohistochemical analysis of paraffin-embedded human colon cancer using 10450-1-AP (GJB1 antibody) at dilution of 1:50 (under 40x lens).



Immunohistochemical analysis of paraffin-embedded human colon cancer using 10450-1-AP (GJB1 antibody) at dilution of 1:50 (under 10x lens).



IP result of anti-Connexin-32 (IP:10450-1-AP, 4ug; Detection:10450-1-AP 1:300) with mouse brain tissue lysate 4000ug.