

Myelin basic protein Polyclonal antibody

Catalog Number: 10458-1-AP

87 Publications

Basic Information

Catalog Number:

10458-1-AP

Size:

500 µg/ml

Source:

Rabbit

Isotype:

IgG

Immunogen Catalog Number:

AG0713

GenBank Accession Number:

BC008749

GeneID (NCBI):

4155

UNIPROT ID:

P02686

Full Name:

myelin basic protein

Calculated MW:

33 kDa

Observed MW:

14-23 kDa

Purification Method:

Antigen affinity purification

Recommended Dilutions:

WB 1:2000-1:16000

IHC 1:50-1:500

IF 1:50-1:500

Applications

Tested Applications:

IF-P, IHC, WB, ELISA

Cited Applications:

FC, IF, IHC, WB

Species Specificity:

human, mouse, rat

Cited Species:

human, rat, mouse

Note-IHC: suggested antigen retrieval with TE buffer pH 9.0; (*) Alternatively, antigen retrieval may be performed with citrate buffer pH 6.0

Positive Controls:

WB : mouse brain tissue, rat brain tissue

IHC : mouse brain tissue,

IF : mouse brain tissue,

Background Information

MBP belongs to the myelin basic protein family. The classic group of MBP isoforms (isoform 4-isoform 14) are the most abundant protein components of the myelin membrane in the CNS. They have a role in both its formation and stabilization. The smaller isoforms might have an important role in remyelination of denuded axons in multiple sclerosis. The non-classic group of MBP isoforms (isoform 1-isoform 3/Golli-MBPs) may preferentially have a role in the early developing brain long before myelination, maybe as components of transcriptional complexes, and may also be involved in signaling pathways in T-cells and neural cells. MBP has six isoforms. Catalog# 10458-1-AP is capable of recognizing multiple isoforms of MBP.

Notable Publications

Author	Pubmed ID	Journal	Application
Wei Cai	36170234	Autophagy	IF,FC
Guangcong Peng	34562473	Brain Res	IF
Jiuyang Ding	34562559	Toxicol Lett	IHC

Storage

Storage:

Store at -20°C. Stable for one year after shipment.

Storage Buffer:

PBS with 0.02% sodium azide and 50% glycerol pH 7.3.

Aliquoting is unnecessary for -20°C storage

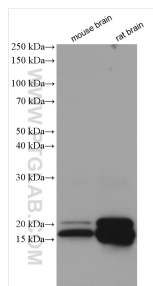
For technical support and original validation data for this product please contact:

T: 4006900926

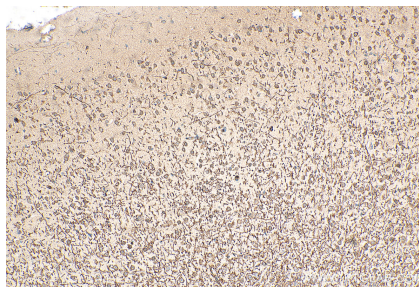
E: Proteintech-CN@ptglab.comW: ptgcn.com

This product is exclusively available under Proteintech Group brand and is not available to purchase from any other manufacturer.

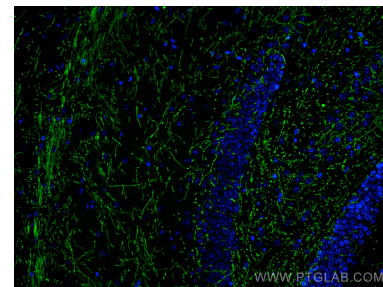
Selected Validation Data



Various lysates were subjected to SDS PAGE followed by western blot with 10458-1-AP (Myelin basic protein antibody) at dilution of 1:8000 incubated at room temperature for 1.5 hours.



Immunohistochemical analysis of paraffin-embedded mouse brain tissue slide using 10458-1-AP (Myelin basic protein antibody) at dilution of 1:200 (under 10x lens). Heat mediated antigen retrieval with Tris-EDTA buffer (pH 9.0).



Immunofluorescent analysis of (4% PFA) fixed mouse brain tissue using Myelin basic protein antibody (10458-1-AP) at dilution of 1:200 and CoraLite®488-Conjugated AffiniPure Goat Anti-Rabbit IgG(H+L).