

## Cytokeratin 6A Polyclonal antibody

Catalog Number: 10590-1-AP

16 Publications

## Basic Information

## Catalog Number:

10590-1-AP

## Size:

1000 µg/ml

## Source:

Rabbit

## Isotype:

IgG

## Immunogen Catalog Number:

AG0882

## GenBank Accession Number:

BC008807

## GeneID (NCBI):

3853

## UNIPROT ID:

P02538

## Full Name:

keratin 6A

## Calculated MW:

60 kDa

## Observed MW:

56 kDa

## Purification Method:

Antigen affinity purification

## Recommended Dilutions:

WB 1:10000-1:50000

IHC 1:200-1:800

IF 1:50-1:500

## Applications

## Tested Applications:

FC, IF/ICC, IHC, WB, ELISA

## Cited Applications:

IF, IHC, WB

## Species Specificity:

human, rat

## Cited Species:

human, rat, mouse

## Positive Controls:

**WB**: A431 cells, MCF-7 cells, HeLa cells, A375 cells, rat skin tissue, U-251 cells**IHC**: human oesophagus cancer tissue, human breast cancer tissue, human skin tissue, human lung cancer tissue**IF**: A431 cells, HeLa cells

**Note-IHC: suggested antigen retrieval with **TE buffer pH 9.0**; (\*) Alternatively, antigen retrieval may be performed with **citrate buffer pH 6.0****

## Background Information

Keratins are a large family of proteins that form the intermediate filament cytoskeleton of epithelial cells, which are classified into two major sequence types. Type I keratins are a group of acidic intermediate filament proteins, including K9-K23, and the hair keratins Ha1-Ha8. Type II keratins are the basic or neutral counterparts to the acidic type I keratins, including K1-K8, and the hair keratins, Hb1-Hb6. Keratin 6 is a type II keratin. It is used as marker for epidermal hyperproliferation and differentiation. There are three keratin 6 isoforms: keratin 6A, 6B and 6C. They share more than 99% identical DNA sequence.

## Notable Publications

Author	Pubmed ID	Journal	Application
Bing Sun	27684953	PLoS One	WB
Lihua Gao	32168425	J Cell Mol Med	WB, IHC, IF
Jian Xiao	32162441	Clin Respir J	WB

## Storage

## Storage:

Store at -20°C. Stable for one year after shipment.

## Storage Buffer:

PBS with 0.02% sodium azide and 50% glycerol pH 7.3.

Aliquoting is unnecessary for -20°C storage

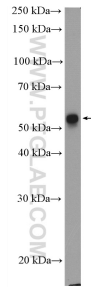
For technical support and original validation data for this product please contact:

T: 4006900926

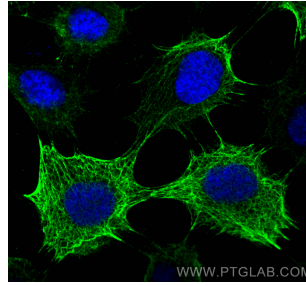
E: [Proteintech-CN@ptglab.com](mailto:Proteintech-CN@ptglab.com)W: [ptgcn.com](http://ptgcn.com)

**This product is exclusively available under Proteintech Group brand and is not available to purchase from any other manufacturer.**

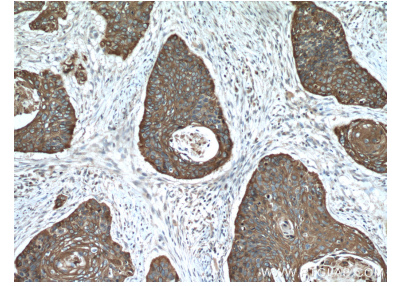
## Selected Validation Data



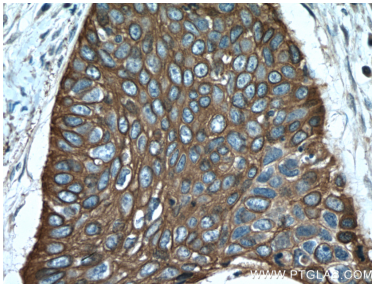
A431 cells were subjected to SDS PAGE followed by western blot with 10590-1-AP (Cytokeratin 6A antibody) at dilution of 1:50000 incubated at room temperature for 1.5 hours.



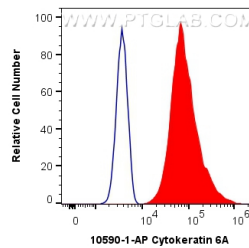
Immunofluorescent analysis of (-20°C Methanol) fixed A431 cells using Cytokeratin 6A antibody (10590-1-AP) at dilution of 1:200 and CoraLite® 488-Conjugated AffiniPure Goat Anti-Rabbit IgG(H+L).



Immunohistochemical analysis of paraffin-embedded human oesophagus cancer tissue slide using 10590-1-AP (Cytokeratin 6A antibody) at dilution of 1:400 (under 10x lens. Heat mediated antigen retrieval with Tris-EDTA buffer (pH 9.0).



Immunohistochemical analysis of paraffin-embedded human oesophagus cancer tissue slide using 10590-1-AP (Cytokeratin 6A antibody) at dilution of 1:400 (under 40x lens. Heat mediated antigen retrieval with Tris-EDTA buffer (pH 9.0).



1X10<sup>6</sup> A431 cells were intracellularly stained with 0.4 ug Anti-Human Cytokeratin 6A (10590-1-AP) and CoraLite® 488-Conjugated AffiniPure Goat Anti-Rabbit IgG(H+L) at dilution 1:1000 (red), or 0.4 ug Isotype Control. Cells were fixed with 4% PFA and permeabilized with Flow Cytometry Perm Buffer (PF00011-C).