

For Research Use Only

Inhibin Beta A Polyclonal antibody

Catalog Number: 10651-1-AP

Featured Product

16 Publications



Basic Information

Catalog Number:

10651-1-AP

Size:

250 µg/ml

Source:

Rabbit

Isotype:

IgG

Immunogen Catalog Number:

AG1001

GenBank Accession Number:

BC007858

GeneID (NCBI):

3624

UNIPROT ID:

P08476

Full Name:

inhibin, beta A

Calculated MW:

47 kDa

Observed MW:

47 kDa

Purification Method:

Antigen affinity purification

Recommended Dilutions:

WB 1:500-1:1000

IHC 1:20-1:200

IF 1:20-1:200

Applications

Tested Applications:

IF/ICC, IHC, WB, ELISA

Cited Applications:

IF, IHC, WB

Species Specificity:

human

Cited Species:

human, sheep, mouse

Positive Controls:

WB: HeLa cells, MCF-7 cells, A549 cells, SGC-7901 cells, BGC-823 cells, HepG2 cells

IHC: human lung cancer tissue,

IF: A549 cells,

Note-IHC: suggested antigen retrieval with TE buffer pH 9.0; (*) Alternatively, antigen retrieval may be performed with citrate buffer pH 6.0

Background Information

Inhibin is a 32-kD dimeric glycoprotein consisting of an alpha subunit and one of two beta subunits (beta A or beta B) leading to inhibin A or B, respectively, which was isolated and cloned on the basis of its ability to inhibit FSH release from the pituitary. Inhibin beta A forms a disulfide-linked homo-dimer known as activin A, which has been implicated in multiple biologic processes, including neoplastic progression. The inhibin beta A can also bind the beta B and A isoforms to form activin AB and inhibin, respectively.

Notable Publications

Author	Pubmed ID	Journal	Application
Yongjin Bao	34537472	Theriogenology	WB,IHC
Cai Kailai K	21998670	PLoS One	WB
Xiaoting Li	31827640	Dis Markers	WB, IHC

Storage

Storage:

Store at -20°C. Stable for one year after shipment.

Storage Buffer:

PBS with 0.02% sodium azide and 50% glycerol pH 7.3.

Aliquoting is unnecessary for -20°C storage

For technical support and original validation data for this product please contact:

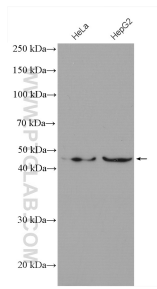
T: 4006900926

E: Proteintech-CN@ptglab.com

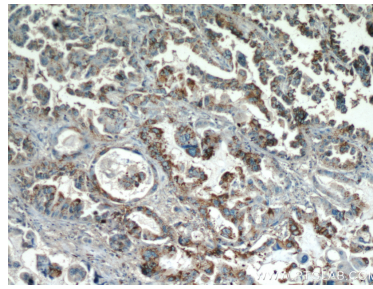
W: ptgcn.com

This product is exclusively available under Proteintech Group brand and is not available to purchase from any other manufacturer.

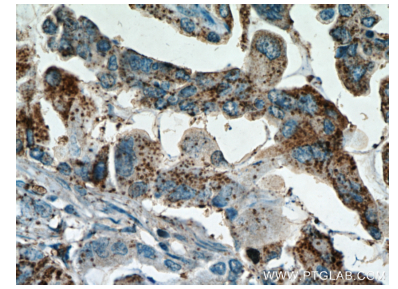
Selected Validation Data



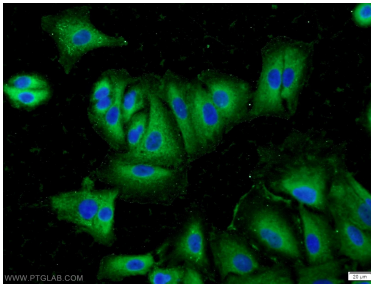
Various lysates were subjected to SDS PAGE followed by western blot with 10651-1-AP (Inhibin beta A antibody) at dilution of 1:600 incubated at room temperature for 1.5 hours.



Immunohistochemical analysis of paraffin-embedded human lung cancer using 10651-1-AP (Inhibin beta A antibody) at dilution of 1:50 (under 10x lens).



Immunohistochemical analysis of paraffin-embedded human lung cancer using 10651-1-AP (Inhibin beta A antibody) at dilution of 1:50 (under 40x lens).



Immunofluorescent analysis of A549 cells using 10651-1-AP (Inhibin beta A antibody) at dilution of 1:50 and Alexa Fluor 488-conjugated AffiniPure Goat Anti-Rabbit IgG(H+L).