

For Research Use Only

CDC23 Polyclonal antibody

Catalog Number: 10683-1-AP



Basic Information

Catalog Number:

10683-1-AP

Size:

600 µg/ml

Source:

Rabbit

Isotype:

IgG

Immunogen Catalog Number:

AG1068

GenBank Accession Number:

BC005258

GeneID (NCBI):

8697

UNIPROT ID:

Q9UJX2

Full Name:

cell division cycle 23 homolog (S.

cerevisiae)

Calculated MW:

68 kDa

Observed MW:

69 kDa

Purification Method:

Antigen affinity purification

Recommended Dilutions:

WB 1:500-1:3000

Applications

Tested Applications:

WB, ELISA

Species Specificity:

human, mouse, rat

Positive Controls:

WB : MOLT-4 cells, HEK-293 cells, Jurkat cells, K-562 cells, Caco-2 cells

Background Information

CDC23 (cell division cycle protein 23 homolog) is also named ANAPC8 and belongs to the APC8/CDC23 family. It is a subunit of the anaphase-promoting complex (APC), which functions at the metaphase-to-anaphase transition of the cell cycle and is regulated by spindle checkpoint proteins. It can be phosphorylated and the phosphorylation of Thr-562 occurs specifically during mitosis (PMID:19690332). It has 3 isoforms produced by alternative splicing with the molecular weight of 69 kDa, 17 kDa, and 56 kDa.

Storage

Storage:

Store at -20°C. Stable for one year after shipment.

Storage Buffer:

PBS with 0.02% sodium azide and 50% glycerol pH 7.3.

Aliquoting is unnecessary for -20°C storage

For technical support and original validation data for this product please contact:

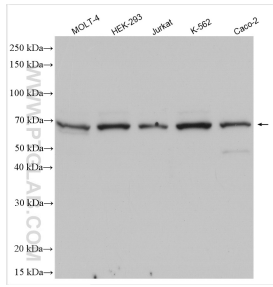
T: 4006900926

E: Proteintech-CN@ptglab.com

W: ptgcn.com

This product is exclusively available under Proteintech Group brand and is not available to purchase from any other manufacturer.

Selected Validation Data



Various lysates were subjected to SDS PAGE followed by western blot with 10683-1-AP (CDC23 antibody) at dilution of 1:1500 incubated at room temperature for 1.5 hours.