

For Research Use Only

# ARF1 Polyclonal antibody

Catalog Number: 10790-1-AP

Featured Product

19 Publications



## Basic Information

<b>Catalog Number:</b> 10790-1-AP	<b>GenBank Accession Number:</b> BC009247	<b>Purification Method:</b> Antigen affinity purification
<b>Size:</b> 350 µg/ml	<b>GeneID (NCBI):</b> 375	<b>Recommended Dilutions:</b> WB 1:1000-1:4000 IHC 1:50-1:500 IF 1:50-1:500
<b>Source:</b> Rabbit	<b>UNIPROT ID:</b> P84077	
<b>Isotype:</b> IgG	<b>Full Name:</b> ADP-ribosylation factor 1	
<b>Immunogen Catalog Number:</b> AG1244	<b>Calculated MW:</b> 21 kDa	
	<b>Observed MW:</b> 18-21 kDa	

## Applications

**Tested Applications:**  
IF/ICC, IHC, WB, ELISA

**Cited Applications:**  
CoIP, IF, IHC, IP, WB

**Species Specificity:**  
human, mouse, rat, monkey

**Cited Species:**  
human, rat, mouse

**Note-IHC: suggested antigen retrieval with TE buffer pH 9.0; (\*) Alternatively, antigen retrieval may be performed with citrate buffer pH 6.0**

**Positive Controls:**

**WB:** HeLa cells, rat brain tissue, mouse brain tissue, COS-7 cells, HEK-293 cells

**IHC:** human breast cancer tissue, human prostate cancer tissue, human colon cancer tissue

**IF:** HeLa cells,

## Background Information

ADP-ribosylation factors (ARFs) are members of the ARF family of GTP-binding proteins of the Ras superfamily, with 20 kDa protein size. ARFs bind and regulate GTP/GDP cycle by alternating between the active GTP-bound and inactive GDP-bound conformations. ARF family proteins are essential and ubiquitous in eukaryotes. Six highly conserved members of the family have been identified in mammalian cells. They function in vesicular traffic and actin remodelling and other bioprocesses in cells. The ARF1 protein is localized to the Golgi apparatus and has a central role in intra-Golgi transport. It mainly functions in coat recruitment. (PMID: 7759471, PMID: 16042562). This antibody can bind ARFs for the close sequences.

## Notable Publications

Author	Pubmed ID	Journal	Application
Xihua Yue	34493279	BMC Biol	WB
Bingying Xu	36229297	Fertil Steril	WB
Hui-Fang Hu	36396045	J Adv Res	WB, CoIP

## Storage

**Storage:**

Store at -20°C. Stable for one year after shipment.

**Storage Buffer:**

PBS with 0.02% sodium azide and 50% glycerol pH 7.3.

Aliquoting is unnecessary for -20°C storage

For technical support and original validation data for this product please contact:

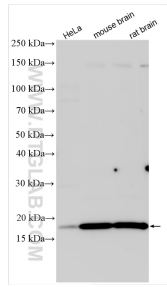
T: 4006900926

E: Proteintech-CN@ptglab.com

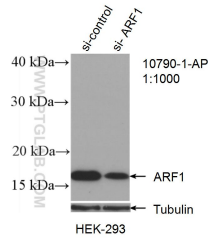
W: ptgcn.com

**This product is exclusively available under Proteintech Group brand and is not available to purchase from any other manufacturer.**

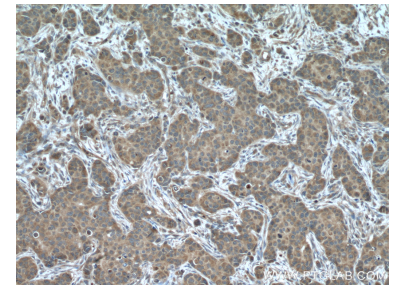
## Selected Validation Data



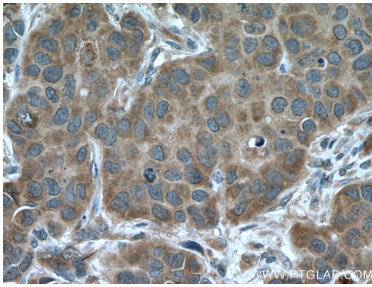
Various lysates were subjected to SDS PAGE followed by western blot with 10790-1-AP (ARF1 antibody) at dilution of 1:2000 incubated at room temperature for 1.5 hours.



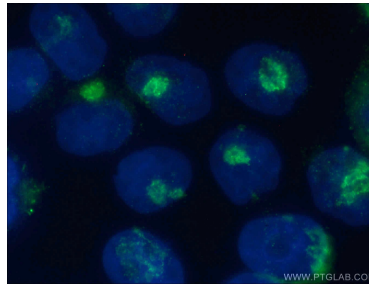
WB result of ARF1 antibody (10790-1-AP; 1:1000; incubated at room temperature for 1.5 hours) with sh-Control and sh-ARF1 transfected HEK-293 cells.



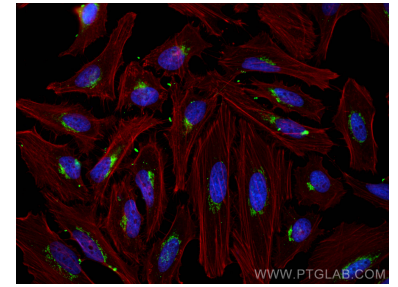
Immunohistochemical analysis of paraffin-embedded human breast cancer tissue slide using 10790-1-AP (ARF1 antibody) at dilution of 1:200 (under 10x lens. Heat mediated antigen retrieval with Tris-EDTA buffer (pH 9.0).



Immunohistochemical analysis of paraffin-embedded human breast cancer tissue slide using 10790-1-AP (ARF1 antibody) at dilution of 1:200 (under 40x lens. Heat mediated antigen retrieval with Tris-EDTA buffer (pH 9.0).



Immunofluorescent analysis of (4% PFA) fixed HeLa cells using 10790-1-AP (ARF1 antibody) at dilution of 1:50 and Alexa Fluor 488-Conjugated AffiniPure Goat Anti-Rabbit IgG(H+L).



Immunofluorescent analysis of (4% PFA) fixed HeLa cells using ARF1 antibody (10790-1-AP) at dilution of 1:200 and CoraLite@488-Conjugated AffiniPure Goat Anti-Rabbit IgG(H+L), CL594-Phalloidin (red).