

For Research Use Only

Alpha Adducin Polyclonal antibody

Catalog Number: 10791-1-AP

2 Publications



Basic Information

Catalog Number:

10791-1-AP

Size:

700 µg/ml

Source:

Rabbit

Isotype:

IgG

Immunogen Catalog Number:

AG1245

GenBank Accession Number:

BC013393

GeneID (NCBI):

118

UNIPROT ID:

P35611

Full Name:

adducin 1 (alpha)

Calculated MW:

81 kDa, 84 kDa, 70 kDa

Observed MW:

115-120 kDa

Purification Method:

Antigen affinity purification

Recommended Dilutions:

WB 1:500-1:2000

IHC 1:20-1:200

IF 1:50-1:500

Applications

Tested Applications:

IF-P, IHC, WB, ELISA

Cited Applications:

WB

Species Specificity:

human, mouse, rat

Cited Species:

rat, bovine

Note-IHC: suggested antigen retrieval with *TE buffer pH 9.0*; (*) Alternatively, antigen retrieval may be performed with *citrate buffer pH 6.0*

Positive Controls:

WB : K-562 cells, mouse testis tissue

IHC : human ovary tumor tissue,

IF : mouse brain tissue,

Background Information

Notable Publications

Author	Pubmed ID	Journal	Application
Yue Wang	35945402	Mol Biol Rep	WB
Nghi M Nguyen	35456952	Int J Mol Sci	WB

Storage

Storage:

Store at -20°C. Stable for one year after shipment.

Storage Buffer:

PBS with 0.02% sodium azide and 50% glycerol pH 7.3.

Aliquoting is unnecessary for -20°C storage

For technical support and original validation data for this product please contact:

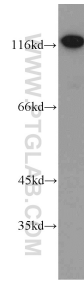
T: 4006900926

E: Proteintech-CN@ptglab.com

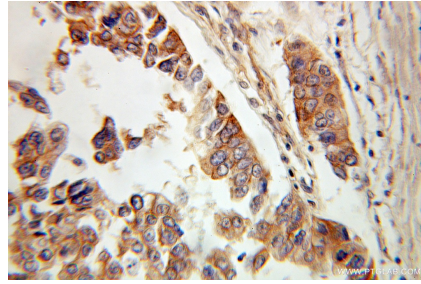
W: ptgcn.com

This product is exclusively available under Proteintech Group brand and is not available to purchase from any other manufacturer.

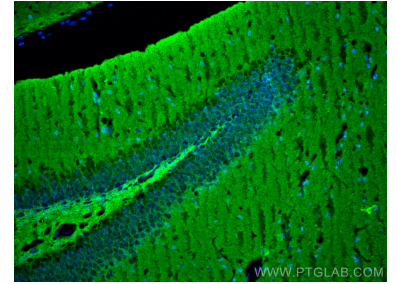
Selected Validation Data



K-562 cells were subjected to SDS PAGE followed by western blot with 10791-1-AP (Alpha adducin antibody) at dilution of 1:800 incubated at room temperature for 1.5 hours.



Immunohistochemical analysis of paraffin-embedded human ovary tumor using 10791-1-AP (Alpha adducin antibody) at dilution of 1:100 (under 10x lens).



Immunofluorescent analysis of (4% PFA) fixed mouse brain tissue using Alpha Adducin antibody (10791-1-AP) at dilution of 1:200 and CoraLite®488-Conjugated AffiniPure Goat Anti-Rabbit IgG(H+L).