

# Lamin B2 Polyclonal antibody

Catalog Number: 10895-1-AP

Featured Product

21 Publications

## Basic Information

## Catalog Number:

10895-1-AP

## Size:

1000 µg/ml

## Source:

Rabbit

## Isotype:

IgG

## Immunogen Catalog Number:

AG1335

## GenBank Accession Number:

BC006551

## GeneID (NCBI):

84823

## UNIPROT ID:

Q03252

## Full Name:

lamin B2

## Calculated MW:

68 kDa

## Observed MW:

66-68 kDa

## Purification Method:

Antigen affinity purification

## Recommended Dilutions:

WB 1:2000-1:10000

IP 0.5-4.0 µg for 1.0-3.0 mg of total protein lysate

IHC 1:50-1:500

IF 1:50-1:500

## Applications

## Tested Applications:

FC, IF/ICC, IHC, IP, WB, ELISA

## Cited Applications:

IF, IHC, WB

## Species Specificity:

human, mouse, rat

## Cited Species:

human, rat, mouse

**Note-IHC: suggested antigen retrieval with TE buffer pH 9.0; (\*) Alternatively, antigen retrieval may be performed with citrate buffer pH 6.0**

## Positive Controls:

WB : HepG2 cells, Jurkat cells, Raji cells, mouse brain tissue

IP : Jurkat cells,

IHC : human lung cancer tissue, human colon cancer tissue

IF : HepG2 cells, SH-SY5Y cells

## Background Information

Lamins are nuclear membrane structural components that are important in structural integrity of the nucleus and may also interact with chromatin (PMID: 33033404). Research studies show that lamin B2 knockout mice exhibit neuronal developmental defects and that both proteins are essential for typical brain development (PMID: 20145110). Mutations in Lamin B2 can result in a susceptibility to developing acquired partial lipodystrophy, a rare disorder characterized by the progressive loss of subcutaneous fat in a bilaterally symmetrical fashion (PMID: 16826530).

## Notable Publications

Author	Pubmed ID	Journal	Application
Ralf Willebrand	30183074	Eur J Immunol	WB
Huanhuan Sha	36266920	Cancer Med	WB
Ziying Wei	34721038	Front Pharmacol	WB

## Storage

## Storage:

Store at -20°C. Stable for one year after shipment.

## Storage Buffer:

PBS with 0.02% sodium azide and 50% glycerol pH 7.3.

Aliquoting is unnecessary for -20°C storage

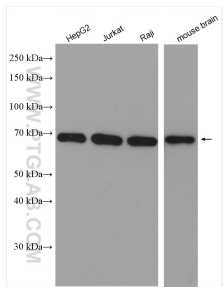
For technical support and original validation data for this product please contact:

T: 4006900926

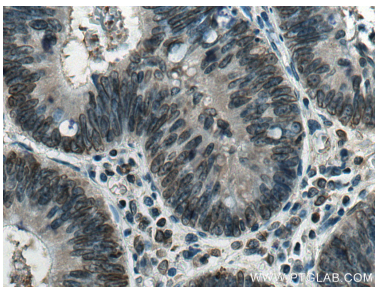
E: [Proteintech-CN@ptglab.com](mailto:Proteintech-CN@ptglab.com)W: [ptgcn.com](http://ptgcn.com)

**This product is exclusively available under Proteintech Group brand and is not available to purchase from any other manufacturer.**

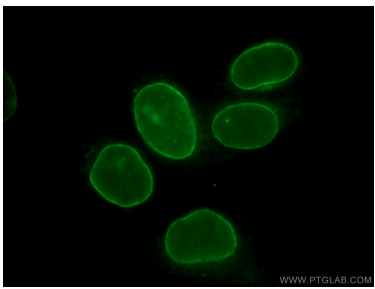
Selected Validation Data



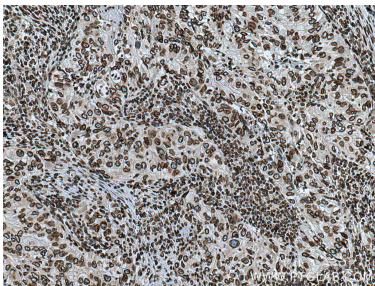
Various lysates were subjected to SDS PAGE followed by western blot with 10895-1-AP (LMNB2 antibody) at dilution of 1:8000 incubated at room temperature for 1.5 hours.



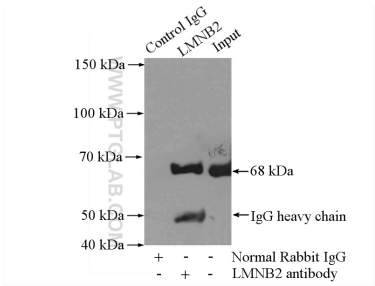
Immunohistochemical analysis of paraffin-embedded human colon cancer tissue slide using 10895-1-AP (LMNB2 antibody) at dilution of 1:200 (under 40x lens). Heat mediated antigen retrieval with Tris-EDTA buffer (pH 9.0).



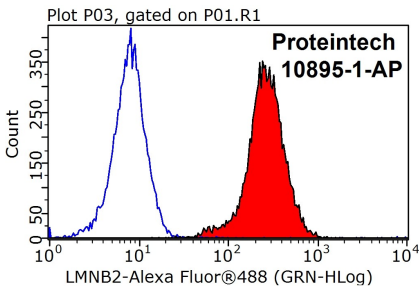
Immunofluorescent analysis of (-20°C Ethanol) fixed HepG2 cells using 10895-1-AP (LMNB2 antibody) at dilution of 1:100 and Alexa Fluor 488-Conjugated AffiniPure Goat Anti-Rabbit IgG(H+L).



Immunohistochemical analysis of paraffin-embedded human lung cancer tissue slide using 10895-1-AP (LMNB2 antibody) at dilution of 1:200 (under 10x lens). Heat mediated antigen retrieval with Tris-EDTA buffer (pH 9.0).



IP result of anti-Lamin B2 (IP:10895-1-AP, 3ug; Detection:10895-1-AP 1:500) with Jurkat cells lysate 2400ug.



1X10<sup>6</sup> HEK-293T cells were stained with 0.2ug LMNB2 antibody (10895-1-AP, red) and control antibody (blue). Fixed with 90% MeOH blocked with 3% BSA (30 min). Alexa Fluor 488-conjugated AffiniPure Goat Anti-Rabbit IgG(H+L) with dilution 1:1000.