

For Research Use Only

E2F4 Polyclonal antibody

Catalog Number: 10923-1-AP

Featured Product

11 Publications



Basic Information

Catalog Number:

10923-1-AP

Size:

600 µg/ml

Source:

Rabbit

Isotype:

IgG

Immunogen Catalog Number:

AG1365

GenBank Accession Number:

BC033180

GeneID (NCBI):

1874

UNIPROT ID:

Q16254

Full Name:

E2F transcription factor 4, p107/p130-binding

Calculated MW:

44 kDa

Observed MW:

60-70 kDa

Purification Method:

Antigen affinity purification

Recommended Dilutions:

WB 1:500-1:2000

IP 0.5-4.0 µg for 1.0-3.0 mg of total protein lysate

IHC 1:20-1:200

Applications

Tested Applications:

IHC, IP, WB, ELISA

Cited Applications:

WB, IP, IF, IHC, ChIP

Species Specificity:

human, mouse, rat

Cited Species:

human, mouse

Note-IHC: suggested antigen retrieval with TE buffer pH 9.0; (*) Alternatively, antigen retrieval may be performed with citrate buffer pH 6.0

Positive Controls:

WB: A431 cells, Jurkat cells, HL-60 cells, Raji cells, HeLa cells, NIH/3T3 cells

IP: mouse brain tissue,

IHC: human lymphoma tissue,

Background Information

Transcription factor E2F4 (E2F4) is a transcription activator that binds DNA cooperatively with DP proteins through the E2 recognition site 5'-TTTC[CG]CGC-3' found in the promoter region of a number of genes whose products are involved in cell cycle regulation or in DNA replication. The DRTF1/E2F complex functions in the control of cell-cycle progression from G1 to S phase. E2F-4 binds with high affinity to RBL1 and RBL2. In some instances, can also bind RB protein. The observed molecular weight of 60-70 kDa is the phosphorylation of E2F4 protein.

Notable Publications

Author	Pubmed ID	Journal	Application
Yinghui Wang	34601503	Cell Death Dis	WB
Xiwen Zhang	29987913	J Cell Physiol	WB, IHC
Yuting Wang	35023014	Protein Cell	WB, ChIP

Storage

Storage:

Store at -20°C. Stable for one year after shipment.

Storage Buffer:

PBS with 0.02% sodium azide and 50% glycerol pH 7.3.

Aliquoting is unnecessary for -20°C storage

For technical support and original validation data for this product please contact:

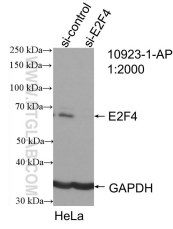
T: 4006900926

E: Proteintech-CN@ptglab.com

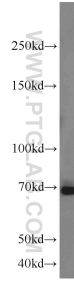
W: ptgcn.com

This product is exclusively available under Proteintech Group brand and is not available to purchase from any other manufacturer.

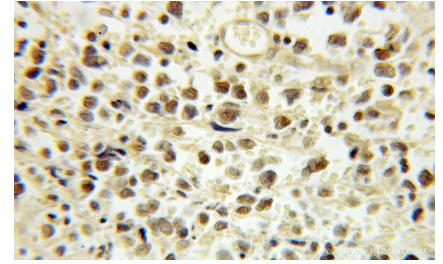
Selected Validation Data



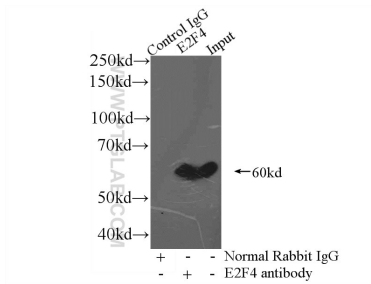
WB result of E2F4 antibody (10923-1-AP; 1:2000; incubated at room temperature for 1.5 hours) with sh-Control and sh-E2F4 transfected HeLa cells.



A431 cells were subjected to SDS PAGE followed by western blot with 10923-1-AP (E2F4 antibody) at dilution of 1:1000 incubated at room temperature for 1.5 hours.



Immunohistochemical analysis of paraffin-embedded human lymphoma using 10923-1-AP (E2F4 antibody) at dilution of 1:100 (under 10x lens).



IP result of anti-E2F4 (IP:10923-1-AP, 3ug; Detection:10923-1-AP 1:1000) with mouse brain tissue lysate 3600ug.