

For Research Use Only

# PPP1CC Polyclonal antibody

Catalog Number: 11082-1-AP **6 Publications**



## Basic Information

**Catalog Number:**

11082-1-AP

**Size:**

400 µg/ml

**Source:**

Rabbit

**Isotype:**

IgG

**Immunogen Catalog Number:**

AG1550

**GenBank Accession Number:**

BC014073

**GeneID (NCBI):**

5501

**UNIPROT ID:**

P36873

**Full Name:**

protein phosphatase 1, catalytic subunit, gamma isoform

**Calculated MW:**

35 kDa

**Observed MW:**

35 kDa

**Purification Method:**

Antigen affinity purification

**Recommended Dilutions:**

WB 1:2000-1:16000

IP 0.5-4.0 µg for 1.0-3.0 mg of total protein lysate

IHC 1:50-1:500

IF 1:50-1:500

## Applications

**Tested Applications:**

IF/ICC, IHC, IP, WB, ELISA

**Cited Applications:**

IP, WB

**Species Specificity:**

human, mouse, rat

**Cited Species:**

human, rat, mouse

**Positive Controls:**

**WB** : HEK-293 cells, MCF-7 cells, L02 cells, HEK-293T cells, mouse brain tissue, rat brain tissue

**IP** : HEK-293 cells,

**IHC** : human pancreas cancer tissue,

**IF** : HEK-293 cells,

**Note-IHC: suggested antigen retrieval with TE buffer pH 9.0; (\*) Alternatively, antigen retrieval may be performed with citrate buffer pH 6.0**

## Background Information

PPP1CC, also named as PP-1G, belongs to the PPP phosphatase family and PP-1 subfamily. Protein phosphatase 1 (PP1) is essential for cell division, and participates in the regulation of glycogen metabolism, muscle contractility and protein synthesis. It is involved in regulation of ionic conductances and long-term synaptic plasticity. PPP1CC may play an important role in dephosphorylating substrates such as the postsynaptic density-associated Ca<sup>2+</sup>/calmodulin dependent protein kinase II.

## Notable Publications

Author	Pubmed ID	Journal	Application
Ru-Jia Liao	25224648	Clin Exp Pharmacol Physiol	WB, IP
Xiaoman Zhu	36096985	Cell Death Dis	WB
Chao Huang	24196533	Am J Physiol Cell Physiol	WB

## Storage

**Storage:**

Store at -20°C. Stable for one year after shipment.

**Storage Buffer:**

PBS with 0.02% sodium azide and 50% glycerol pH 7.3.

Aliquoting is unnecessary for -20°C storage

For technical support and original validation data for this product please contact:

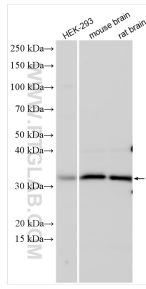
T: 4006900926

E: Proteintech-CN@ptglab.com

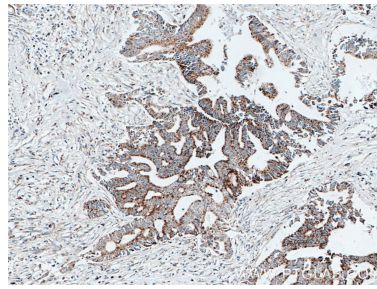
W: ptgcn.com

**This product is exclusively available under Proteintech Group brand and is not available to purchase from any other manufacturer.**

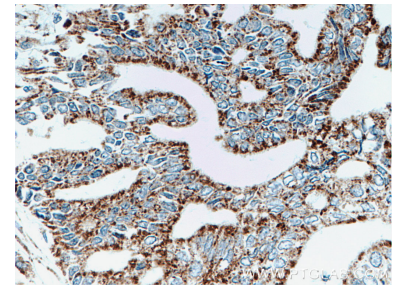
## Selected Validation Data



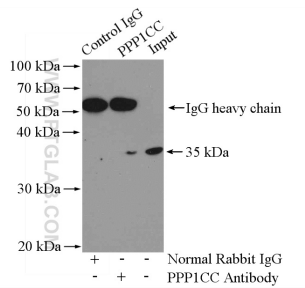
Various lysates were subjected to SDS PAGE followed by western blot with 11082-1-AP (PPP1CC antibody) at dilution of 1:8000 incubated at room temperature for 1.5 hours.



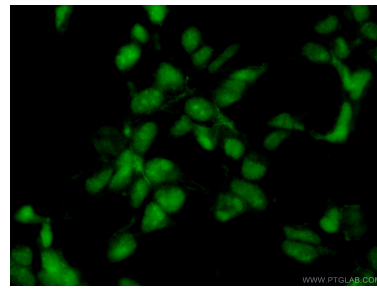
Immunohistochemical analysis of paraffin-embedded human pancreas cancer tissue slide using 11082-1-AP (PPP1CC antibody) at dilution of 1:200 (under 10x lens. Heat mediated antigen retrieval with Tris-EDTA buffer (pH 9.0).



Immunohistochemical analysis of paraffin-embedded human pancreas cancer tissue slide using 11082-1-AP (PPP1CC antibody) at dilution of 1:200 (under 40x lens. Heat mediated antigen retrieval with Tris-EDTA buffer (pH 9.0).



IP result of anti-PPP1CC (IP:11082-1-AP, 4ug; Detection:11082-1-AP 1:500) with HEK-293 cells lysate 2000ug.



Immunofluorescent analysis of (10% Formaldehyde) fixed HEK-293 cells using 11082-1-AP (PPP1CC antibody) at dilution of 1:50 and Alexa Fluor 488-conjugated AffiniPure Goat Anti-Rabbit IgG(H+L).