

# ATG12 Polyclonal antibody

Catalog Number: 11264-1-AP

8 Publications

## Basic Information

## Catalog Number:

11264-1-AP

## Size:

800 µg/ml

## Source:

Rabbit

## Isotype:

IgG

## Immunogen Catalog Number:

AG1791

## GenBank Accession Number:

BC012266

## GeneID (NCBI):

9140

## UNIPROT ID:

O94817

## Full Name:

ATG12 autophagy related 12 homolog  
(S. cerevisiae)

## Calculated MW:

15 kDa

## Observed MW:

48-55 kDa

## Purification Method:

Antigen affinity purification

## Recommended Dilutions:

WB 1:500-1:1000

IHC 1:50-1:500

IF 1:10-1:100

## Applications

## Tested Applications:

IF/ICC, IHC, WB, ELISA

## Cited Applications:

WB, IF, IHC

## Species Specificity:

human, mouse

## Cited Species:

human, rat, mouse

**Note-IHC: suggested antigen retrieval with TE buffer pH 9.0; (\*) Alternatively, antigen retrieval may be performed with citrate buffer pH 6.0**

## Positive Controls:

WB : PC-3 cells, COLO 320 cells, NIH/3T3 cells, HeLa cells, HCT 116 cells

IHC : human colon cancer tissue,

IF : PC-3 cells,

## Background Information

ATG12, also named as APG12 and APG12L, belongs to the ATG12 family. It is required for autophagy. Free ATG12 is 15kd or 8kd. Conjugated to ATG5, ATG12-ATG5 show 48-55kd.

## Notable Publications

Author	Pubmed ID	Journal	Application
Huangrong Zhu	36120586	Front Cell Dev Biol	WB, IF
Xinxin Si	36382664	Pharmacology	IHC
Jian-He Lu	34070854	Biology (Basel)	WB

## Storage

## Storage:

Store at -20°C. Stable for one year after shipment.

## Storage Buffer:

PBS with 0.02% sodium azide and 50% glycerol pH 7.3.

Aliquoting is unnecessary for -20°C storage

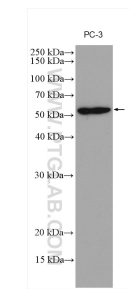
For technical support and original validation data for this product please contact:

T: 4006900926

E: [Proteintech-CN@ptglab.com](mailto:Proteintech-CN@ptglab.com)W: [ptgcn.com](http://ptgcn.com)

This product is exclusively available under Proteintech Group brand and is not available to purchase from any other manufacturer.

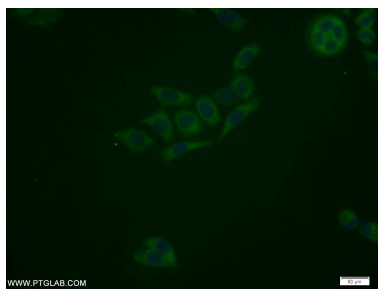
Selected Validation Data



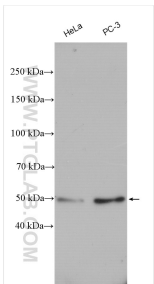
PC-3 cells were subjected to SDS PAGE followed by western blot with 11264-1-AP (ATG12 antibody) at dilution of 1:800 incubated at room temperature for 1.5 hours.



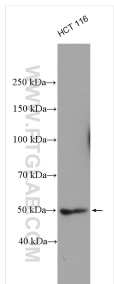
Immunohistochemical analysis of paraffin-embedded human colon cancer tissue slide using 11264-1-AP (ATG12 antibody) at dilution of 1:200 (under 10x lens). Heat mediated antigen retrieval with Tris-EDTA buffer (pH 9.0).



Immunofluorescent analysis of PC-3 cells using 11264-1-AP (ATG12 antibody) at dilution of 1:25 and Alexa Fluor 488-conjugated AffiniPure Goat Anti-Rabbit IgG(H+L).



Various lysates were subjected to SDS PAGE followed by western blot with 11264-1-AP (ATG12 antibody) at dilution of 1:3000 incubated at room temperature for 1.5 hours.



HCT 116 cells were subjected to SDS PAGE followed by western blot with 11264-1-AP (ATG12 antibody) at dilution of 1:3000 incubated at room temperature for 1.5 hours.