

# CREB3 Polyclonal antibody

Catalog Number: 11275-1-AP

Featured Product

15 Publications

## Basic Information

## Catalog Number:

11275-1-AP

## Size:

450 µg/ml

## Source:

Rabbit

## Isotype:

IgG

## Immunogen Catalog Number:

AG1823

## GenBank Accession Number:

BC009402

## GeneID (NCBI):

10488

## UNIPROT ID:

O43889

## Full Name:

cAMP responsive element binding protein 3

## Calculated MW:

44 kDa

## Observed MW:

40-64 kDa

## Purification Method:

Antigen affinity purification

## Recommended Dilutions:

WB 1:500-1:1000

IF 1:50-1:500

## Applications

## Tested Applications:

IF/ICC, WB, ELISA

## Cited Applications:

WB, IP, IF, IHC, ChIP

## Species Specificity:

human

## Cited Species:

human, mouse

## Positive Controls:

WB: Jurkat cells, HeLa cells

IF: PC-3 cells,

## Background Information

CREB3, also named as LZIP and Luman, belongs to the bZIP family and ATF subfamily. It is a transcription factor activated upon intramembrane proteolysis (RIP), binds the cAMP response element (CRE) (consensus: 5'-GTGACGT[AG][AG]-3'), a sequence present in many viral and cellular promoters. CREB3 binds to and requires HCFC1 as a coactivator. The activity and expression are suppressed when the HCFC1-CREB3 complex binds with CREBZF. Participates in LKN-1/CCL15-induced chemotaxis signaling. CREB3 is N-glycosylated and released by proteolysis. So the MW of CREB3 is 40kd to 64kd (PMID: 12138176).

## Notable Publications

Author	Pubmed ID	Journal	Application
Jenna Penney	30337854	Front Mol Neurosci	WB, IF, IP, ChIP
Ryoichi Murase	36152228	Mol Biol Rep	WB
Suhyun Kim	36057892	Cell Mol Life Sci	WB, IHC

## Storage

## Storage:

Store at -20°C. Stable for one year after shipment.

## Storage Buffer:

PBS with 0.02% sodium azide and 50% glycerol pH 7.3.

Aliquoting is unnecessary for -20°C storage

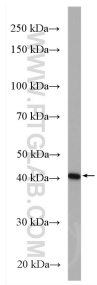
For technical support and original validation data for this product please contact:

T: 4006900926

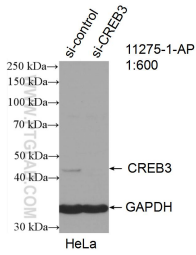
E: [Proteintech-CN@ptglab.com](mailto:Proteintech-CN@ptglab.com)W: [ptgcn.com](http://ptgcn.com)

This product is exclusively available under Proteintech Group brand and is not available to purchase from any other manufacturer.

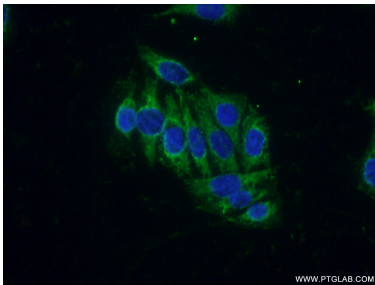
## Selected Validation Data



Jurkat cells were subjected to SDS PAGE followed by western blot with 11275-1-AP (CREB3 antibody) at dilution of 1:600 incubated at room temperature for 1.5 hours.



WB result of CREB3 antibody (11275-1-AP; 1:600; incubated at room temperature for 1.5 hours) with sh-Control and sh-CREB3 transfected HeLa cells.



Immunofluorescent analysis of (-20℃ Ethanol) fixed PC-3 cells using 11275-1-AP (CREB3 antibody) at dilution of 1:50 and Alexa Fluor 488-conjugated AffiniPure Goat Anti-Rabbit IgG(H+L).