

For Research Use Only

# SF1 Polyclonal antibody

Catalog Number: 11635-1-AP **2 Publications**



## Basic Information

<b>Catalog Number:</b> 11635-1-AP	<b>GenBank Accession Number:</b> BC020217	<b>Purification Method:</b> Antigen affinity purification
<b>Size:</b> 900 µg/ml	<b>GeneID (NCBI):</b> 7536	<b>Recommended Dilutions:</b> WB 1:500-1:3000 IHC 1:250-1:1000
<b>Source:</b> Rabbit	<b>UNIPROT ID:</b> Q15637	
<b>Isotype:</b> IgG	<b>Full Name:</b> splicing factor 1	
<b>Immunogen Catalog Number:</b> AG2209	<b>Calculated MW:</b> 638 aa, 68 kDa	
	<b>Observed MW:</b> 65-71 kDa	

## Applications

<b>Tested Applications:</b> IHC, WB, ELISA	<b>Positive Controls:</b> WB : HeLa cells, HepG2 cells IHC : mouse ovary tissue,
<b>Cited Applications:</b> WB, IF, IHC	
<b>Species Specificity:</b> human, mouse	
<b>Cited Species:</b> human	
<b>Note-IHC: suggested antigen retrieval with TE buffer pH 9.0; (*) Alternatively, antigen retrieval may be performed with citrate buffer pH 6.0</b>	

## Background Information

SF1 is a nuclear pre-mRNA splicing factor, it specifically recognizes the intron branch point sequence at the 3' splice site, together with the large subunit of U2 auxiliary factor (U2AF), and is required for the early stages of spliceosome assembly. It also plays a role in nuclear pre-mRNA retention and transcriptional repression. The molecular weight of SF1 ranges from 59 kDa to 71 kDa due to alternative splicing.

## Notable Publications

Author	Pubmed ID	Journal	Application
Rebecca Moschall	28166800	Retrovirology	WB
Morgan K Penny	37509222	Cancers (Basel)	IHC,IF

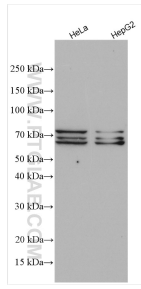
## Storage

**Storage:**  
Store at -20°C. Stable for one year after shipment.  
**Storage Buffer:**  
PBS with 0.02% sodium azide and 50% glycerol pH 7.3.  
Aliquoting is unnecessary for -20°C storage

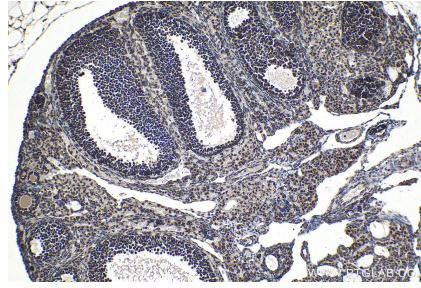
For technical support and original validation data for this product please contact:  
T: 4006900926 E: Proteintech-CN@ptglab.com W: ptgcn.com

This product is exclusively available under Proteintech Group brand and is not available to purchase from any other manufacturer.

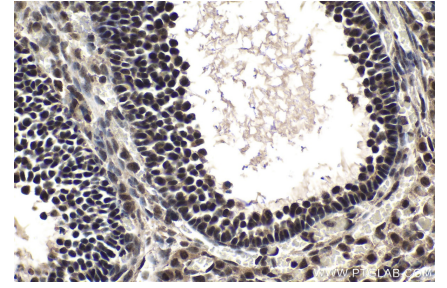
## Selected Validation Data



Various lysates were subjected to SDS PAGE followed by western blot with 11635-1-AP (SF1 antibody) at dilution of 1:1500 incubated at room temperature for 1.5 hours.



Immunohistochemical analysis of paraffin-embedded mouse ovary tissue slide using 11635-1-AP (SF1 antibody) at dilution of 1:500 (under 10x lens). Heat mediated antigen retrieval with Tris-EDTA buffer (pH 9.0).



Immunohistochemical analysis of paraffin-embedded mouse ovary tissue slide using 11635-1-AP (SF1 antibody) at dilution of 1:500 (under 40x lens). Heat mediated antigen retrieval with Tris-EDTA buffer (pH 9.0).