

IFT81 Polyclonal antibody

Catalog Number: 11744-1-AP

Featured Product

47 Publications

Basic Information

Catalog Number:

11744-1-AP

Size:

500 µg/ml

Source:

Rabbit

Isotype:

IgG

Immunogen Catalog Number:

AG2339

GenBank Accession Number:

BC029349

GeneID (NCBI):

28981

UNIPROT ID:

Q8WYAO

Full Name:

intraflagellar transport 81 homolog
(Chlamydomonas)

Calculated MW:

676 aa, 80 kDa

Observed MW:

75-80 kDa

Purification Method:

Antigen affinity purification

Recommended Dilutions:

WB 1:1000-1:8000

IP 0.5-4.0 µg for 1.0-3.0 mg of total
protein lysate

IHC 1:20-1:200

IF 1:20-1:200

Applications

Tested Applications:

IF/ICC, IHC, IP, WB, ELISA

Cited Applications:

CoIP, IF, IHC, WB

Species Specificity:

human, mouse, rat, canine

Cited Species:

human, rat, mouse

**Note-IHC: suggested antigen retrieval with
TE buffer pH 9.0; (*) Alternatively, antigen
retrieval may be performed with citrate
buffer pH 6.0**

Positive Controls:

WB : mouse brain tissue, mouse testis tissue, HEK-293
cells, human brain tissue, rat testis tissue

IP : mouse brain tissue,

IHC : human prostate cancer tissue,

IF : hTERT-RPE1 cells, MDCK cells, C2C12 cells

Background Information

Intraflagellar transport (IFT), mediated by molecular motors and IFT particles, is an important transport process that occurs in the cilium and has been shown to be essential for the assembly and maintenance of cilia and flagella in many organisms. IFT particles are multi-subunit complexes of proteins that function to move non-membrane-bound particles from the cell body to the tip of cilium or flagellum, then return them to the cell body. Transport towards the ciliary tip is regulated by the IFT complex B (IFT-B), consisting of at least 15 IFT proteins, in association with kinesin motors, whereas transport from the ciliary tip back to the base is executed by a dynein motor in association with the IFT complex A (IFT-A), currently known to be composed of six IFT proteins. IFT81 is a subunit of IFT complex B. It may play a role in development of the testis and spermatogenesis. There are some isoforms of IFT81 with 73-78 kDa and 43-50 kDa.

Notable Publications

| Author | Pubmed ID | Journal | Application |
|----------------|-----------|---------------|-------------|
| Yong Zhang | 28964737 | Dev Biol | WB |
| Ivan Duran | 27666822 | Sci Rep | WB, IF |
| Malavika Raman | 26389662 | Nat Cell Biol | WB |

Storage

Storage:

Store at -20°C. Stable for one year after shipment.

Storage Buffer:

PBS with 0.02% sodium azide and 50% glycerol pH 7.3.

Aliquoting is unnecessary for -20°C storage

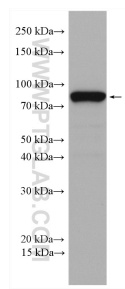
For technical support and original validation data for this product please contact:

T: 4006900926

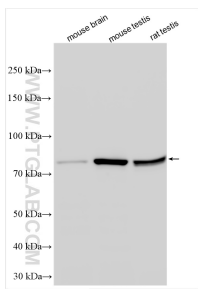
E: Proteintech-CN@ptglab.comW: ptgcn.com

**This product is exclusively available under Proteintech
Group brand and is not available to purchase from any
other manufacturer.**

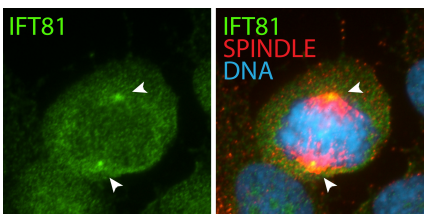
Selected Validation Data



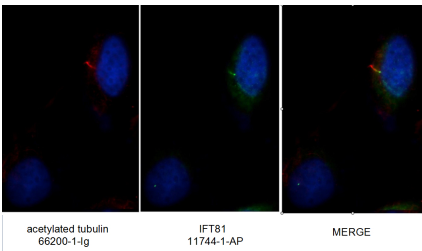
mouse testis tissue were subjected to SDS PAGE followed by western blot with 11744-1-AP (IFT81 antibody) at dilution of 1:600 incubated at room temperature for 1.5 hours.



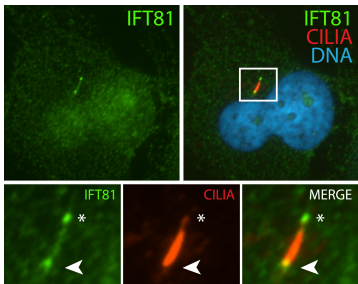
Various lysates were subjected to SDS PAGE followed by western blot with 11744-1-AP (IFT81 antibody) at dilution of 1:4000 incubated at room temperature for 1.5 hours.



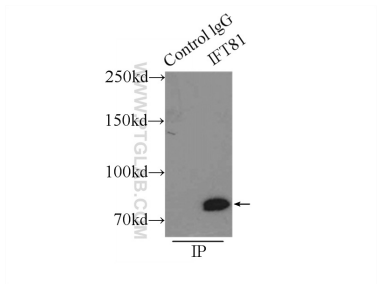
IF result (localization to the spindle poles) of anti-IFT81 (11744-1-AP, 1:50) with metaphase hTERT-RPE1 cells (MeOH fixed) by Dr. Moshe Kim.



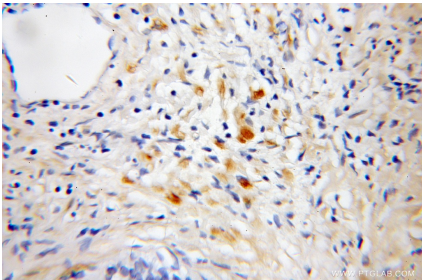
Immunofluorescent images of MDCK cells stained with IFT81 rabbit pAb (11744-1-AP) and acetylated tubulin mouse mAb (66200-1-Ig) at dilution of 1:50, further stained with Alexa Fluor 488-conjugated AffiniPure Goat Anti-Rabbit IgG(H+L) for IFT81, and Rhodamine-Goat anti-rabbit IgG for 66200-1-Ig.



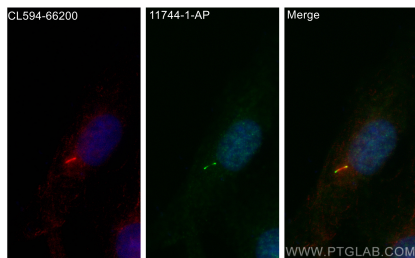
IF result (the base and tip of cilia) of anti-IFT81 (11744-1-AP, 1:50) with serum-starved hTERT-RPE1 (PFA fixed) by Dr. Moshe Kim.



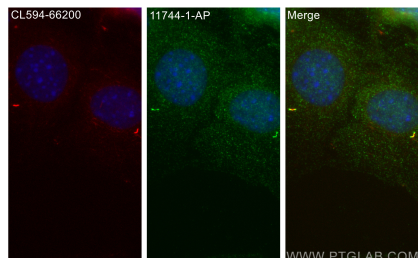
IP result of anti-IFT81 (IP:11744-1-AP, 3ug; Detection:11744-1-AP 1:500) with mouse brain tissue lysate 7500ug.



Immunohistochemical analysis of paraffin-embedded human prostate cancer using 11744-1-AP (IFT81 antibody) at dilution of 1:50 (under 10x lens).



Immunofluorescent analysis of (4% PFA) fixed MDCK cells using IFT81 antibody (11744-1-AP) at dilution of 1:200 and CoraLite®488-Conjugated AffiniPure Goat Anti-Rabbit IgG(H+L), CoraLite®594 acetylated Tubulin(Lys40) antibody (CL594-66200, Clone: 7E5H8, red).



Immunofluorescent analysis of (4% PFA) fixed C2C12 cells using IFT81 antibody (11744-1-AP) at dilution of 1:200 and CoraLite®488-Conjugated AffiniPure Goat Anti-Rabbit IgG(H+L), CoraLite®594 acetylated Tubulin(Lys40) antibody (CL594-66200, Clone: 7E5H8, red).



Immunofluorescent analysis of (4% PFA) fixed hTERT-RPE1 cells using IFT81 antibody (11744-1-AP) at dilution of 1:400 and CoraLite®488-Conjugated AffiniPure Goat Anti-Rabbit IgG(H+L), acetylated Tubulin(Lys40) antibody (66200-1-Ig, Clone: 7E5H8, red).

