

For Research Use Only

PSG1 Polyclonal antibody

Catalog Number: 11809-1-AP

1 Publications



Basic Information

Catalog Number:

11809-1-AP

Size:

180 µg/ml

Source:

Rabbit

Isotype:

IgG

Immunogen Catalog Number:

AG2468

GenBank Accession Number:

BC022338

GeneID (NCBI):

5669

UNIPROT ID:

P11464

Full Name:

pregnancy specific beta-1-glycoprotein 1

Calculated MW:

426 aa, 48 kDa

Observed MW:

72 kDa, 36 kDa

Purification Method:

Antigen affinity purification

Recommended Dilutions:

WB 1:500-1:2000

IHC 1:50-1:500

IF 1:10-1:100

Applications

Tested Applications:

IF/ICC, IHC, WB, ELISA

Cited Applications:

IF

Species Specificity:

human

Cited Species:

human

Note-IHC: suggested antigen retrieval with TE buffer pH 9.0; (*) Alternatively, antigen retrieval may be performed with citrate buffer pH 6.0

Positive Controls:

WB : human kidney tissue, MCF-7 cells

IHC : human placenta tissue,

IF : MCF-7 cells,

Background Information

Notable Publications

Author	Pubmed ID	Journal	Application
Jay M Bolnick	24825422	Fertil Steril	IF

Storage

Storage:

Store at -20°C. Stable for one year after shipment.

Storage Buffer:

PBS with 0.02% sodium azide and 50% glycerol pH 7.3.

Aliquoting is unnecessary for -20°C storage

For technical support and original validation data for this product please contact:

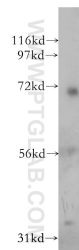
T: 4006900926

E: Proteintech-CN@ptglab.com

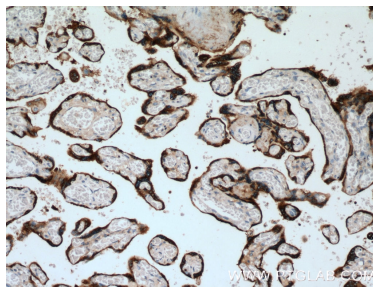
W: ptgcn.com

This product is exclusively available under Proteintech Group brand and is not available to purchase from any other manufacturer.

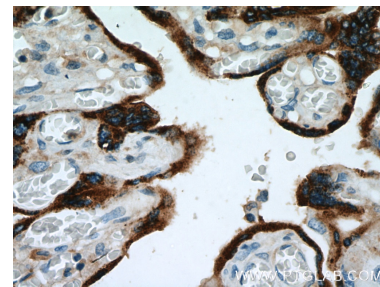
Selected Validation Data



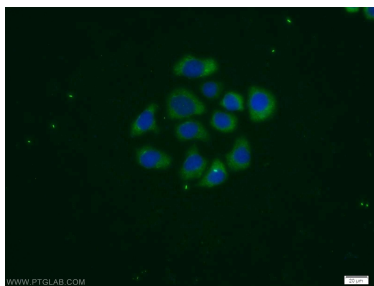
human kidney tissue were subjected to SDS PAGE followed by western blot with 11809-1-AP (PSG1 antibody) at dilution of 1:500 incubated at room temperature for 1.5 hours.



Immunohistochemical analysis of paraffin-embedded human placenta tissue slide using 11809-1-AP (PSG1 antibody) at dilution of 1:200 (under 10x lens. Heat mediated antigen retrieval with Tris-EDTA buffer (pH 9.0).



Immunohistochemical analysis of paraffin-embedded human placenta tissue slide using 11809-1-AP (PSG1 antibody) at dilution of 1:200 (under 40x lens. Heat mediated antigen retrieval with Tris-EDTA buffer (pH 9.0).



Immunofluorescent analysis of MCF-7 cells using 11809-1-AP (PSG1 antibody) at dilution of 1:25 and Alexa Fluor 488-conjugated AffiniPure Goat Anti-Rabbit IgG(H+L).