

# Apolipoprotein H Polyclonal antibody

Catalog Number: 11892-1-AP

2 Publications

## Basic Information

## Catalog Number:

11892-1-AP

## Size:

600 µg/ml

## Source:

Rabbit

## Isotype:

IgG

## Immunogen Catalog Number:

AG2500

## GenBank Accession Number:

BC026283

## GeneID (NCBI):

350

## UNIPROT ID:

P02749

## Full Name:

apolipoprotein H (beta-2-glycoprotein I)

## Calculated MW:

345 aa, 38 kDa

## Observed MW:

43-55 kDa

## Purification Method:

Antigen affinity purification

## Recommended Dilutions:

WB 1:1000-1:4000

IHC 1:20-1:200

IF 1:50-1:500

## Applications

## Tested Applications:

IF/ICC, IHC, WB, ELISA

## Cited Applications:

IHC, IP

## Species Specificity:

human, mouse

## Cited Species:

human

**Note-IHC: suggested antigen retrieval with TE buffer pH 9.0; (\*) Alternatively, antigen retrieval may be performed with citrate buffer pH 6.0**

## Positive Controls:

WB : HepG2 cells, mouse testis tissue

IHC : human liver cancer tissue,

IF : HepG2 cells,

## Background Information

Apolipoprotein H (ApoH), also known as beta2-glycoprotein I (B2-GPI), is a plasma glycoprotein, primarily synthesized in the liver. It has an important function in blood coagulation and clearance of apoptotic bodies from the circulation. ApoH is also an important actor of host innate immune response through its capacity to bind with high affinity to a large panel of pathogens or their proteins. ApoH is a 54 kDa plasma glycoprotein.

## Notable Publications

Author	Pubmed ID	Journal	Application
Chang S Chan	30315258	Nat Commun	IHC
Caijun Zha	29883691	Neuropharmacology	IP

## Storage

## Storage:

Store at -20°C. Stable for one year after shipment.

## Storage Buffer:

PBS with 0.02% sodium azide and 50% glycerol pH 7.3.

Aliquoting is unnecessary for -20°C storage

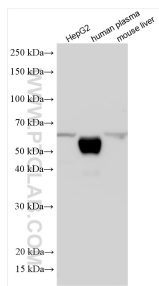
For technical support and original validation data for this product please contact:

T: 4006900926

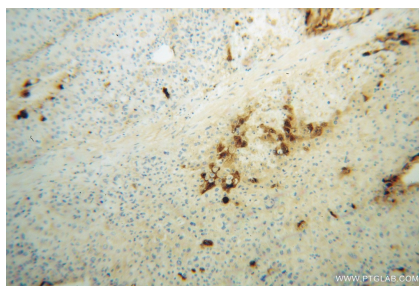
E: [Proteintech-CN@ptglab.com](mailto:Proteintech-CN@ptglab.com)W: [ptgcn.com](http://ptgcn.com)

This product is exclusively available under Proteintech Group brand and is not available to purchase from any other manufacturer.

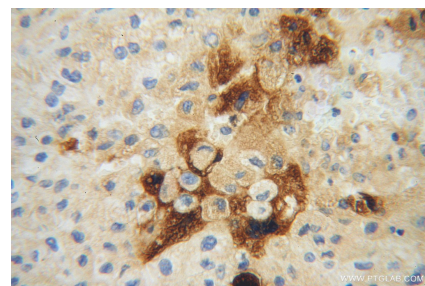
## Selected Validation Data



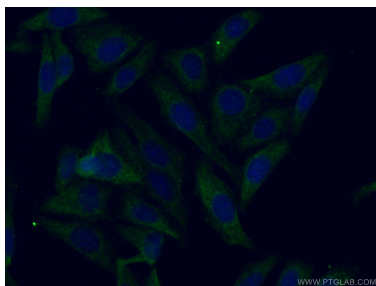
Various lysates were subjected to SDS PAGE followed by western blot with 11892-1-AP (Apolipoprotein H antibody) at dilution of 1:2000 incubated at room temperature for 1.5 hours.



Immunohistochemical analysis of paraffin-embedded human liver cancer using 11892-1-AP (Apolipoprotein H antibody) at dilution of 1:100 (under 10x lens).



Immunohistochemical analysis of paraffin-embedded human liver cancer using 11892-1-AP (Apolipoprotein H antibody) at dilution of 1:100 (under 40x lens).



Immunofluorescent analysis of (-20°C Ethanol) fixed HepG2 cells using 11892-1-AP (Apolipoprotein H antibody) at dilution of 1:50 and Alexa Fluor 488-conjugated AffiniPure Goat Anti-Rabbit IgG(H+L).