

For Research Use Only

# RPS3 Polyclonal antibody

Catalog Number: 11990-1-AP

Featured Product

18 Publications



## Basic Information

**Catalog Number:**

11990-1-AP

**Size:**

500 µg/ml

**Source:**

Rabbit

**Isotype:**

IgG

**Immunogen Catalog Number:**

AG3918

**GenBank Accession Number:**

BC034149

**GeneID (NCBI):**

6188

**UNIPROT ID:**

P23396

**Full Name:**

ribosomal protein S3

**Calculated MW:**

26 aa, 7 kDa

**Observed MW:**

26.7 kDa

**Purification Method:**

Antigen affinity purification

**Recommended Dilutions:**

WB 1:1000-1:6000

IP 0.5-4.0 µg for 1.0-3.0 mg of total protein lysate

IHC 1:20-1:200

## Applications

**Tested Applications:**

IHC, IP, WB, ELISA

**Cited Applications:**

IF, IHC, IP, WB

**Species Specificity:**

human, mouse, rat

**Cited Species:**

human, mouse, pig

**Note-IHC: suggested antigen retrieval with TE buffer pH 9.0; (\*) Alternatively, antigen retrieval may be performed with citrate buffer pH 6.0**

**Positive Controls:**

**WB:** HEK-293 cells, mouse testis tissue, PC-12 cells, HeLa cells, MCF-7 cells, NIH/3T3 cells

**IP:** mouse testis tissue,

**IHC:** human ovary tumor tissue,

## Background Information

40S ribosomal protein S3 (RPS3), also named as SW-cl.26, is a 243 amino acid protein, which contains one KH type-2 domain and belongs to the ribosomal protein S3P family. RPS3 localizes in the cytoplasm. RPS3 is identified in a IGF2BP1-dependent mRNP granule complex, which contains untranslated mRNAs. RPS3 plays a role in repairing various DNA damage acting as a repair UV endonuclease. Nuclear accumulation of RPS3 results in an increase in DNA repair activity to some extent, thereby sustaining neuronal survival.

## Notable Publications

Author	Pubmed ID	Journal	Application
Aaron S Mendez	34624207	Cell Rep	IP
Nerea Ugidos	31620119	Front Immunol	IF
Kai Hao	34848703	Nat Commun	IF

## Storage

**Storage:**

Store at -20°C. Stable for one year after shipment.

**Storage Buffer:**

PBS with 0.02% sodium azide and 50% glycerol pH 7.3.

Aliquoting is unnecessary for -20°C storage

For technical support and original validation data for this product please contact:

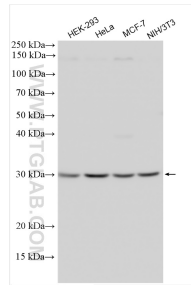
T: 4006900926

E: Proteintech-CN@ptglab.com

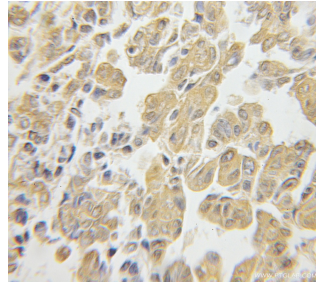
W: ptgcn.com

**This product is exclusively available under Proteintech Group brand and is not available to purchase from any other manufacturer.**

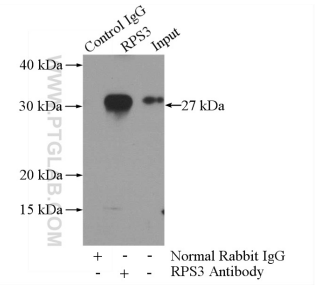
## Selected Validation Data



Various lysates were subjected to SDS PAGE followed by western blot with 11990-1-AP (RPS3 antibody) at dilution of 1:3000 incubated at room temperature for 1.5 hours.



Immunohistochemical analysis of paraffin-embedded human ovary tumor using 11990-1-AP (RPS3 antibody) at dilution of 1:50 (under 10x lens).



IP result of anti-RPS3 (IP:11990-1-AP, 3ug; Detection:11990-1-AP 1:600) with mouse testis tissue lysate 4000ug.