

For Research Use Only

# CIN85 Polyclonal antibody

Catalog Number: 12132-1-AP

Featured Product

3 Publications



## Basic Information

**Catalog Number:**

12132-1-AP

**Size:**

700 µg/ml

**Source:**

Rabbit

**Isotype:**

IgG

**Immunogen Catalog Number:**

AG2777

**GenBank Accession Number:**

BC015806

**GeneID (NCBI):**

30011

**UNIPROT ID:**

Q96B97

**Full Name:**

SH3-domain kinase binding protein 1

**Calculated MW:**

665 aa, 73 kDa

**Observed MW:**

85 kDa

**Purification Method:**

Antigen affinity purification

**Recommended Dilutions:**

WB 1:2000-1:10000

## Applications

**Tested Applications:**

WB, ELISA

**Cited Applications:**

IF, IHC, WB

**Species Specificity:**

human, mouse

**Cited Species:**

human

**Positive Controls:**

WB : Raji cells, fetal human brain tissue, Ramos cells, Jurkat cells, THP-1 cells, NIH/3T3 cells

## Background Information

CIN85 is identified as a Cbl-interacting protein of 85 kDa and belongs to adaptor/scaffold proteins. It is composed of three N-terminal SH3 domains followed by a proline-rich region and a C-terminal coiled-coil region. In association with c-Cbl (Casitas B-lineage Lymphoma), an E3 ubiquitin ligase. As an adaptor protein, CIN85 is involved in Cbl-dependent EGFR internalization, intracellular receptor trafficking, sorting and degradation. Moreover, through the SH3 domains and the proline-rich region, CIN85 is implicated in many protein-protein interactions and it is found to play important roles in other processes such as apoptosis, rearrangement of actin cytoskeleton, cell adhesion, immunological synapse, cell migration and invasion.

## Notable Publications

Author	Pubmed ID	Journal	Application
Ma Yaxi Y	20882291	Arch Gynecol Obstet	IHC
Ihor Yakymovych	26169354	J Cell Biol	WB, IF
Yoon Hye-Young HY	21275903	Biol Cell	WB

## Storage

**Storage:**

Store at -20°C. Stable for one year after shipment.

**Storage Buffer:**

PBS with 0.02% sodium azide and 50% glycerol pH 7.3.

Aliquoting is unnecessary for -20°C storage

For technical support and original validation data for this product please contact:

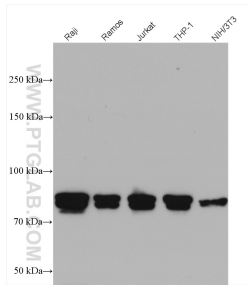
T: 4006900926

E: Proteintech-CN@ptglab.com

W: ptgcn.com

**This product is exclusively available under Proteintech Group brand and is not available to purchase from any other manufacturer.**

## Selected Validation Data



Various lysates were subjected to SDS PAGE followed by western blot with 12132-1-AP (CIN85 antibody) at dilution of 1:5000 incubated at room temperature for 1.5 hours.